



[www.inteva.es](http://www.inteva.es)

# SCREW COUPLINGS



# MANAGEMENT SYSTEM CERTIFICATE

Certificate no.:  
282929-2019-AQ-IBE-ENAC

Initial certification date:  
22 February 2016

Valid:  
11 March 2022 – 19 February 2025  
Expiry date of last certification cycle:  
19 February 2022  
Date of last re-certification:

This is to certify that the management system of

## **INDUSTRIAS TECNICAS DE VALVULERIA, S.A.**

C/ Berguedà, 14-16 (Esq. Empordà), Pol. Ind. Can Bernades - Subirà, 08130, Santa Perpetua de  
Mogoda, Barcelona, Spain

has been found to conform to the Quality Management System standard:  
**ISO 9001:2015**

This certificate is valid for the following scope:

**Design, manufacture and sales of quick couplings, check valves and ball valves.**

Place and date:  
Barcelona, 11 March 2022

For the issuing officer:  
DNV - Business Assurance  
Gran Via de les Corts Catalanes 130-136, Pl. 9,  
08038, Barcelona, Spain



Ana del Rio Salgado  
Management Representative

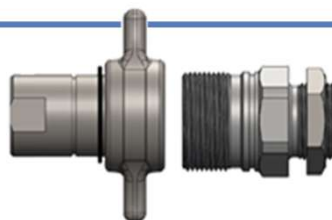


## Series

201

.....

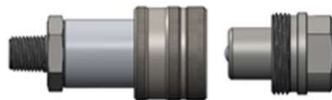
VCR



202

.....

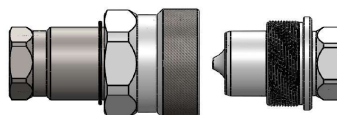
HPA



203

.....

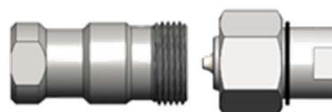
TGW



204

.....

AEV



205

.....

STG



206

.....

SRK



207

.....

CAT



231

.....

VPR



122

.....

AGR



123

.....

AGR+  
ISO A

INDEX

SCREW COUPLINGS



INTEVA



# 201 SERIES VCR



## TECHNICAL SPECIFICATIONS

**Features:** Developed for hydraulic systems on tipper trucks and tank trailers a.o.  
Low pressure drop.

**Working Pressure:** Up to 350 Bar

**Materials:**

Body:	Carbon Steel EN 10277-3
O-rings:	NBR / VITON / EPDM
Back-up-ring:	PTFE
Springs:	EN 10270-1/SH
Balls:	*

**Available Threads:** BSP

**Closing System:** Poppet Valve

**Connection/Disconnection:** Screw and unscrew both parts

**Connection Under Pressure:** Residual pressure

**Available Size:** 3/4" y 1"

**Working Temperature (O-rings)**

	NBR	Viton	EPDM
	+100°C	+200°C	+150°C
	-30°C	-10°C	-40°C

**Sectors: Vehicles**



**Applications:** Designed for Hydraulic Oil (Group II-2014/68/EU)

**Interchange:** FASTER CVE / EDBRO

## MODEL REFERENCE

**Example:**

**201.11114 AE**

Series	Material	Part	Closing	O-rings	Size (S)	Thread
201.	1 Carbon St.	1 Male 2 Female	1 Poppet	0 Without 1 NBR 2 VITON 3 EPDM	4 20 5 25 3/4" 1"	2 letters (see Thread Table on page 999-1)

**201-1**

INTEVA reserves the right to make modifications to its products without prior notice. Any external or internal alterations to our products will automatically void the warranty.

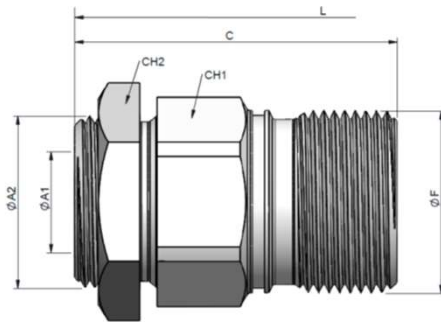




# 201 SERIES VCR

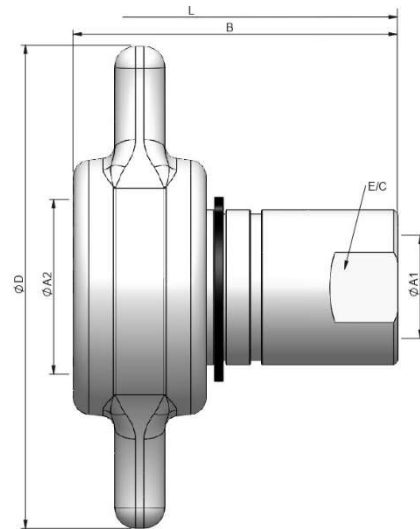


(S) 20 - 3/4"



STANDARD MALE MODELS

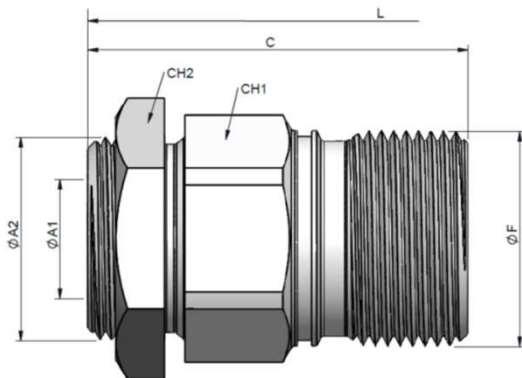
(S)	ØA1	ØA2	REF.		CH1	CH2	C	ØF	L
20	3/4" BSP	1 1/4" BSP	201.11114AE		350	46	50	78	138
	1" BSP	1" BSP	201.11114AQ					68	118.5



STANDARD FEMALE MODELS

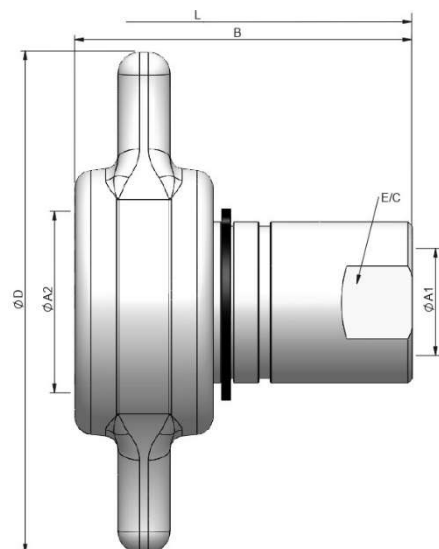
(S)	ØA1	ØA2	REF.		E/C	B	ØD	L
20	3/4" BSP	41.50	201.12114AE		350	33	78	138
	1" BSP		201.12114AQ				74	118.5

(S) 25 - 1"




STANDARD MALE MODELS

(S)	ØA1	ØA2	REF.		CH1	C	ØF	L
25	1" BSP	1 1/4" BSP	201.11115AF	350	55	83	53.6	148



STANDARD FEMALE MODELS

(S)	ØA1	ØA2	REF.		E/C	B	ØD	L
25	1" BSP	51	201.12115AF	350	40	83	115	148



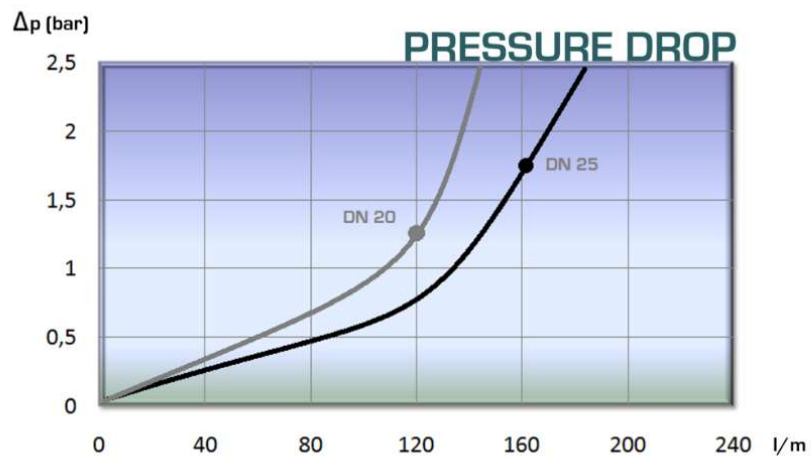
# 201 SERIES VCR



## TECHNICAL DATA

(S)	Rated Flow	Min. Burst Pressure (bar)			Max. Working Pressure
		Male	Female	Connected	
20	120 l/m	1100	1300	1325	350
25	160 l/m	1200	900	1325	300

Test performed according to ISO 18869





# 201 SERIES VCR

CAPS  
PLUGS  
PARKINGS

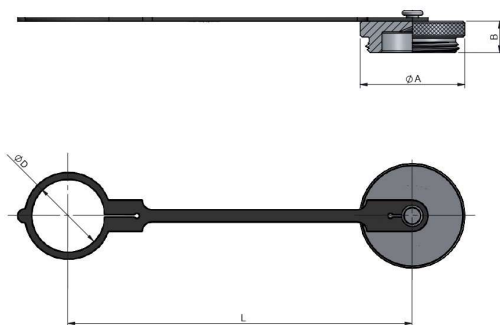
## MODEL REFERENCE / DIMENSIONS

Example:

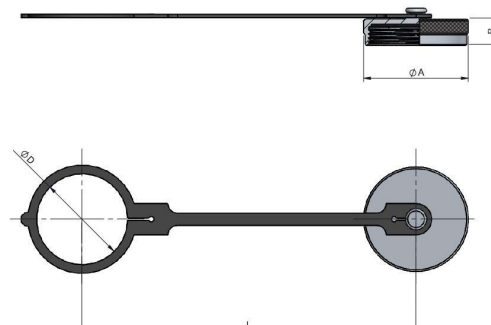
**201.6304 AA**

Series	Material	Part	Color	Size	Type
201.	1 Carbon St.	3 Plug	0 Metal	4 20 3/4"	AA
	6 Aluminum	4 Cap		5 25 1	
		5 Parking			

(S) 10 / (S) 25



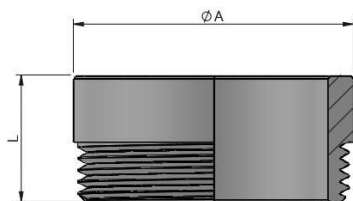
PLUG



CAP

(S)	REF.	ØA	L	B	ØD
20	201.6304AA	50	200	25	37.5
25	201.6305AA	60	191	25	42

(S)	REF.	ØA	L	B	ØD
20	201.6404AA	48	191	13	42
25	201.6405AA	60	191	18	52



PARKING

	REF.	ØA	L
20	201.1504AA	45	25
25	201.1505AA	55	25

201-4

INTEVA reserves the right to make modifications to its products without prior notice. Any external or internal alterations to our products will automatically void the warranty.





# 202 SERIES HPA

Manufactured according to ISO 14540

## TECHNICAL SPECIFICATIONS

**Features:** Designed for cylinders, hand pumps and other high-pressure applications .

**Working Pressure:** Up to 1200 Bar

**Materials:** Body: Carbon St. EN 10277-3  
Stainless Steel 316

O-rings: NBR / VITON / EPDM

Back-up-ring: PTFE

Springs: EN 10270-1/SH

Balls: AISI 1010/1015

**Available Threads:** NPTF

**Closing System:** Poppet Valve or Ball

**Connection/Disconnection:** Screw on / off both parts

**Connection Under Pressure:** Residual pressure

**Available Size:** 1/4" y 3/8"

**Working Temperature (O-rings)**

	NBR	Viton	EPDM
	+100°C	+200°C	+150°C
	-30°C	-10°C	-40°C

**Sectors:** Industrial



**Applications:** Designed for Hydraulic Oil (Group II-2014/68/EU)

**Interchange:** ENERPAC C-604 / CEJN 230 / PARKER 3000

## MODEL REFERENCE

Example:

**202.12242 BN**

Series	Material	Part	Closing	O-rings	Size (S)	Thread
202.	1 Carbon St. 2 SS316	1 Male 2 Female	1 Poppet 2 Ball	0 Without 2 VITON 4 NBR	1 6 : 1/4" 2 10 : 3/8"	2 letters (see Thread Table on page 999-1)

**202-1**

INTEVA reserves the right to make modifications to its products without prior notice. Any external or internal alterations to our products will automatically void the warranty.





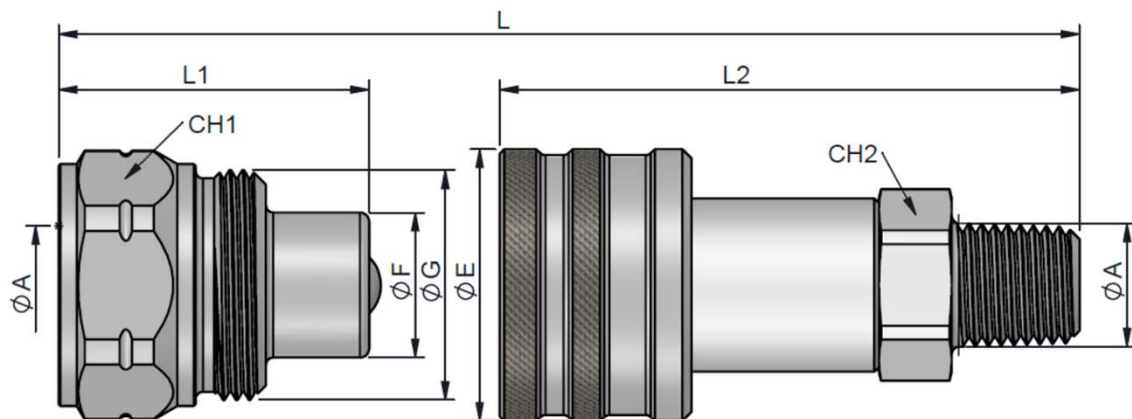


# 202 SERIES HPA

BALL TYPE  
CARBON STEEL & SS316

INTEVA

(S) 6 - 1/4"



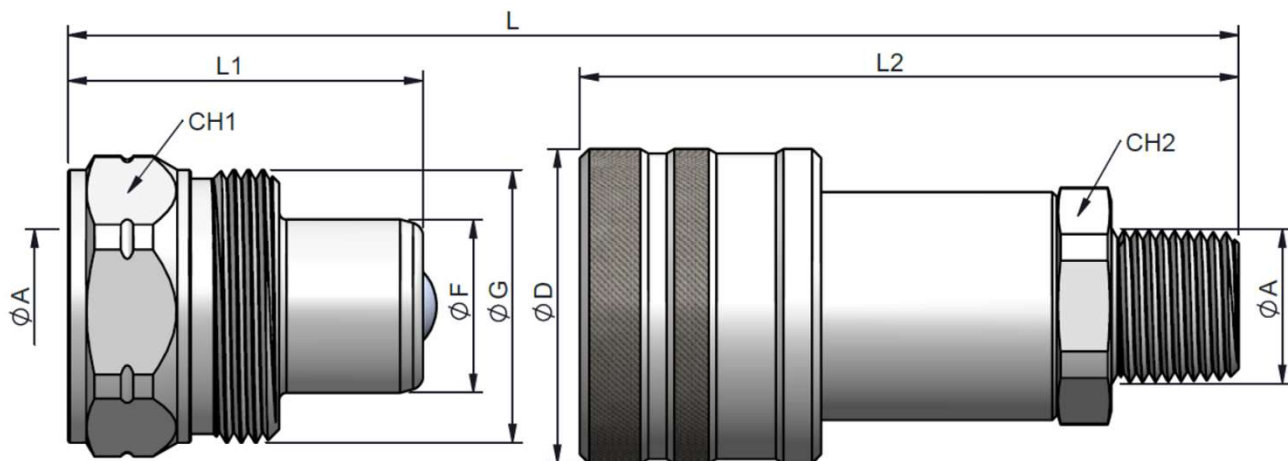
STANDARD MALE MODELS

(S)	ØA	REF.		CH1	ØG	L1	ØF	L
6	1/4" NPT	202.11201BB	700	27	1" - 18 h UNS	34	15.90	78.5
	1/4" NPT	202.21201BB						

STANDARD FEMALE MODELS

(S)	ØA	REF.		CH2	L2	ØE	L
6	1/4" NPT	202.12241BM	700	20	63.5	29.8	78.5
	1/4" NPT	202.22221BM					

(S) 10 - 3/8"



STANDARD MALE MODELS

(S)	ØA	REF.		CH1	ØG	L1	ØF	L
10	3/8" NPT	202.11202BC	700	30	1 3/16" - 12h UN	39	20	87
	3/8" NPT	202.21202BC						

STANDARD FEMALE MODELS

(S)	ØA	REF.		CH2	L2	ØE	L
10	3/8" NPT	202.12242BN	700	24	72.5	34.5	87
	3/8" NPT	202.22222BN					

202-2

INTEVA reserves the right to make modifications to its products without prior notice. Any external or internal alterations to our products will automatically void the warranty.



v11

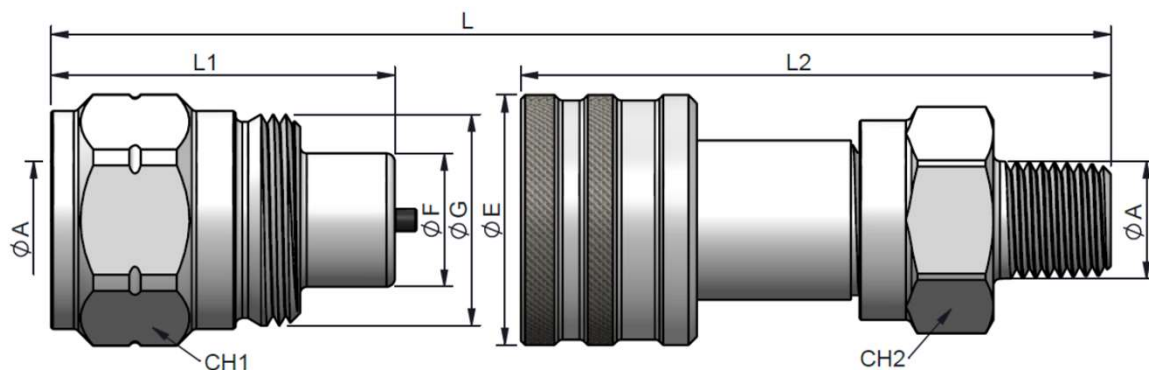


# 202 SERIES HPA

POPPET TYPE  
CARBON STEEL & SS316

INTEVA

(S) 6 - 1/4"



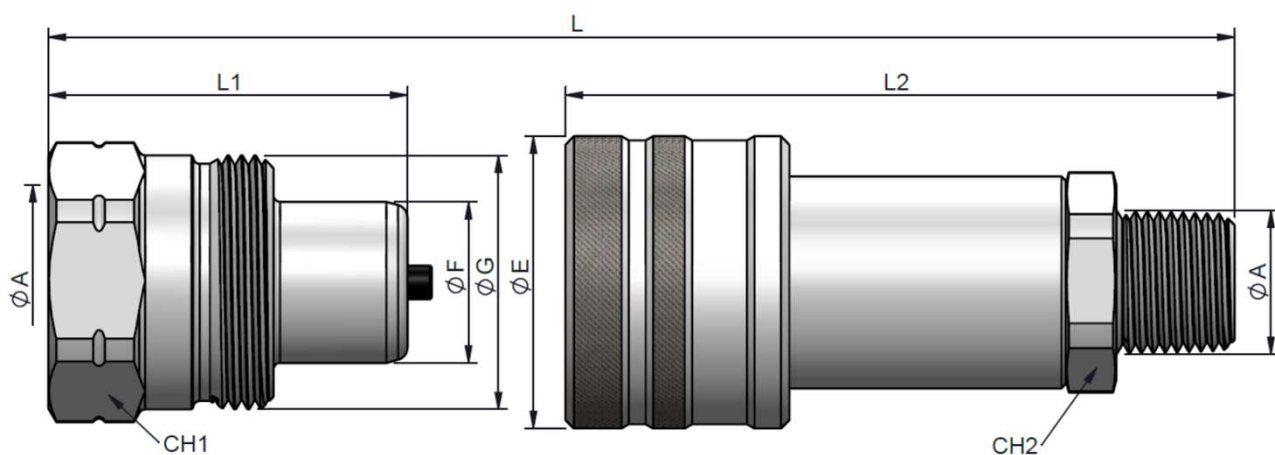
STANDARD MALE MODELS

(S)	ØA	REF.		CH1	ØG	L1	ØF	L
6	1/4" NPT	202.11141BB	1200	27	1" - 18 h UNS	34	15.90	78.5
	1/4" NPT	202.21121BB						

STANDARD FEMALE MODELS

(S)	ØA	REF.		CH2	L2	ØE	L
6	1/4" NPT	202.12241BM	1200	20	63.5	29.8	78.5
	1/4" NPT	202.22221BM					

(S) 10 - 3/8"



STANDARD MALE MODELS

(S)	ØA	REF.		CH1	ØG	L1	ØF	L
10	3/8" NPT	202.11142BC	1200	30	1 3/16" - 12h UN	42,5	20	97,5
	3/8" NPT	202.21122BC						

STANDARD FEMALE MODELS

(S)	ØA	REF.		CH2	L2	ØE	L
10	3/8" NPT	202.12142BN	1200	24	79.2	34.5	97.5
	3/8" NPT	202.22122BN					

202-3

INTEVA reserves the right to make modifications to its products without prior notice. Any external or internal alterations to our products will automatically void the warranty.





# 202 SERIES HPA

CAPS &  
PLUGS

Designed to protect the female (coupler) and male (nipple) parts while disconnected.

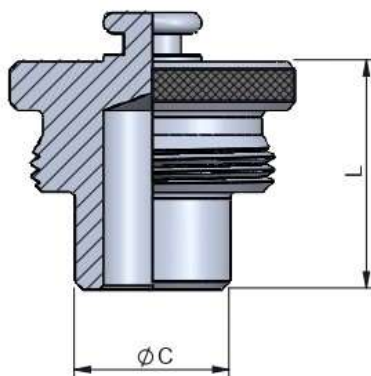
## MODEL REFERENCE / DIMENSIONS

Example:

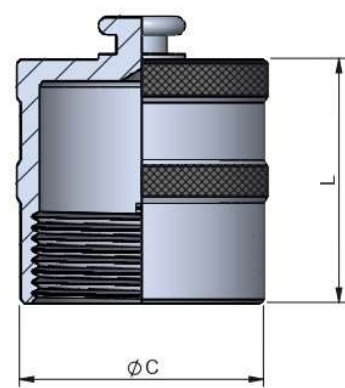
**202.6302 AA**

Series	Material	Part	Color	Size	Type
202.	2 SS316	3 Plug	0 Metal	1 6 1/4'	AA
	5 Plastic	4 Cap	5 Black	2 10 3/8"	
	6 Aluminum				

## (S) 6 / (S) 10 – ALUMINUM & SS316



PLUG



CAP

(S)	ALUMINUM	SS316	ØC	L
6	202.6301AA	202.2301AA	15.85	24
10	202.6302AA	202.2302AA	20	28

(S)	ALUMINUM	SS316	ØC	L
6	202.6401AA	202.2401AA	29	28
10	202.6402AA	202.2402AA	34	34



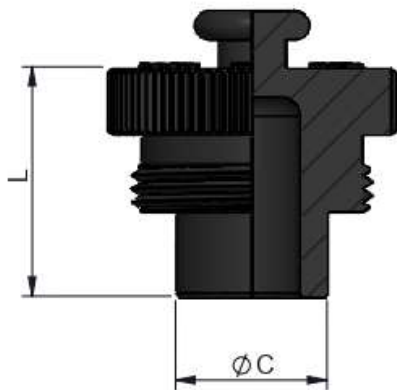
# 202 SERIES

## HPA

CAPS &  
PLUGS

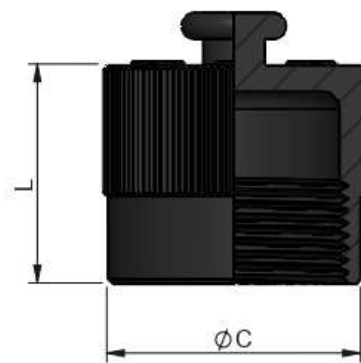
Designed to protect the female (coupler) and male (nipple) parts while disconnected.

### PLASTIC



PLUG

(S)	PLASTIC	ØC	L
6	202.5351AA	15.8	24
10	202.5352AA	20	28



CAP

(S)	PLASTIC	ØC	L
6	202.5451AA	29	25
10	202.5452AA	34	34





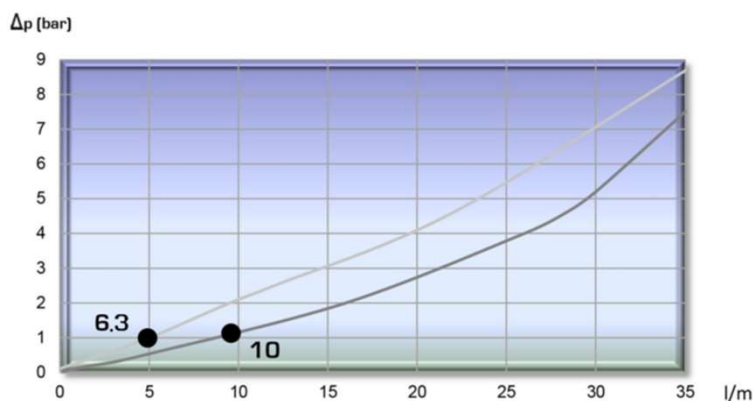
# 202 SERIES HPA

CARBON STEEL & SS316

## TECHNICAL DATA – Ball Type

(S)	Rated Flow	Min. Burst Pressure (bar)			Max. Working Pressure	Spillage
	l/m	Male	Female	Coupled	Bar	Max.
6	5	1500	2000	2200	700	0.2
10	9	1500	2000	2200	700	0.6

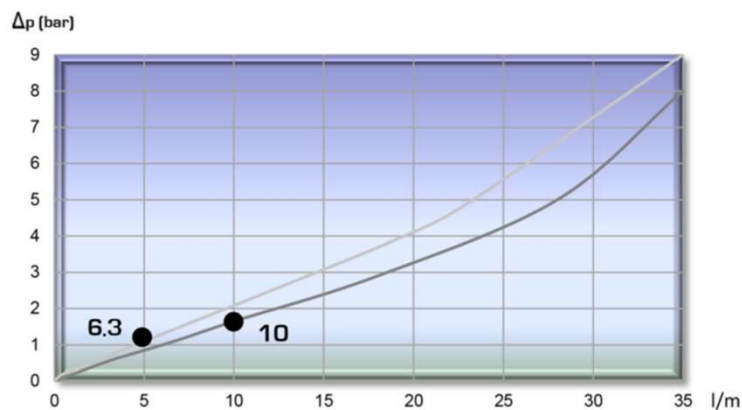
Test performed according to ISO 18869



## TECHNICAL DATA – Poppet Type

(S)	Rated Flow	Min. Burst Pressure (bar)			Max. Working Pressure	Spillage
	l/m	Male	Female	Coupled	Bar	Max.
6	5	1500	2400	2400	1200	0.5
10	9	1500	2400	2800	1200	1.5

Test performed according to ISO 18869



202-6

INTEVA reserves the right to make modifications to its products without prior notice. Any external or internal alterations to our products will automatically void the warranty.





# 203 SERIES

## TGW

CARBON STEEL & SS316

### TECHNICAL SPECIFICATIONS

**Features:** Designed for high pressure and impulse applications.

**Working Pressure:** Up to 950 Bar

**Materials:** Body: Carbon Steel EN -10277-3  
Stainless Steel 316

O-rings: NBR / VITON / EPDM

Back-up-ring: PTFE

Springs: EN-10270-1/SH

Balls: -

**Available Threads:** BSP / NPTF\*

**Closing System:** Poppet Valve or ball

**Connection/Disconnection:** Screw on / off both parts

**Connection Under Pressure:** Residual Pressure

**Available Size:** 1/4" a 2"

**Working Temperature (O-rings)**

NBR	Viton	EPDM
+100°C	+200°C	+150°C
-30°C	-10°C	-40°C

**Sectors:** Industrial



**Applications:** Designed for Hydraulic Oil (Group II-2014/68/EU)

**Interchange:** GROMELLE 6000 / EATON W6000

*\*Others on request and minimum quantity.*

### MODEL REFERENCE

**Example:**

## 203.11115 AF

Series	Material	Part	Closing	O-rings	Size (S)	Thread
203.	1 Carbon St.	1 Male	0 Without	0 Without	1 6	1/4"
	2 SS316	2 Female	1 Poppet	1 NBR	2 10	3/8"
			2 Ball	2 VITON	3 13	1/2"
				3 EPDM	4 20	3/4"
					5 25	1"
					6 32	1 1/4"
					7 40	1 1/2"
					8 50	2"

2 letters (see Thread Table on page 999-1)

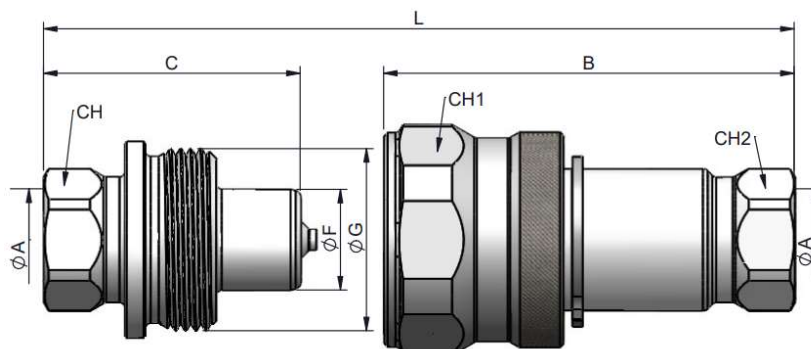


# 203 SERIES TGW

CARBON STEEL



(S) 6 - 1/4"



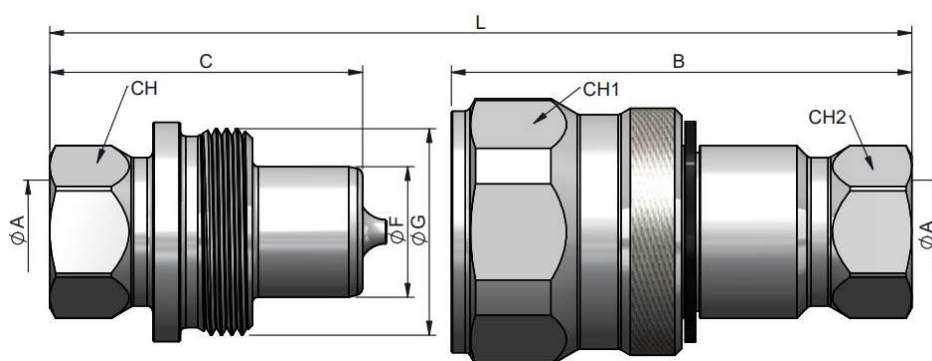
STANDARD MALE MODELS

(S)	ØA	REF.		CH	C	ØF	ØG	L
6	1/4" BSP	203.11111AB		19	40	20	M27x1.5	80
	1/4" NPTF	203.11111BB						

STANDARD FEMALE MODELS

(S)	ØA	REF.		CH2	B	CH1	L
6	1/4" BSP	203.12111AB		19	63	32	80
	1/4" NPTF	203.12111BB					

(S) 10 - 3/8"



STANDARD MALE MODELS

(S)	ØA	REF.		CH	C	ØF	ØG	L
10	3/8" BSP	203.11112AC		22	45.50	20	M30x1.5	81
	3/8" NPTF	203.11112BC						

STANDARD FEMALE MODELS

(S)	ØA	REF.		CH2	B	CH1	L
10	3/8" BSP	203.12112AC		22	67	36	81
	3/8" NPTF	203.12112BC					

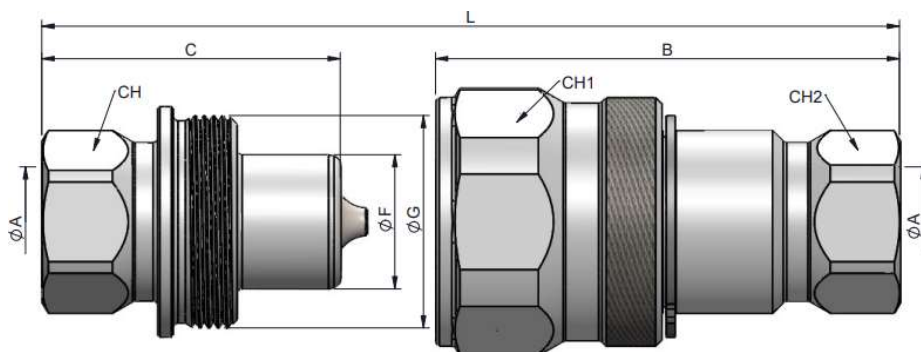


# 203 SERIES TGW

CARBON STEEL



(S) 13 - 1/2"



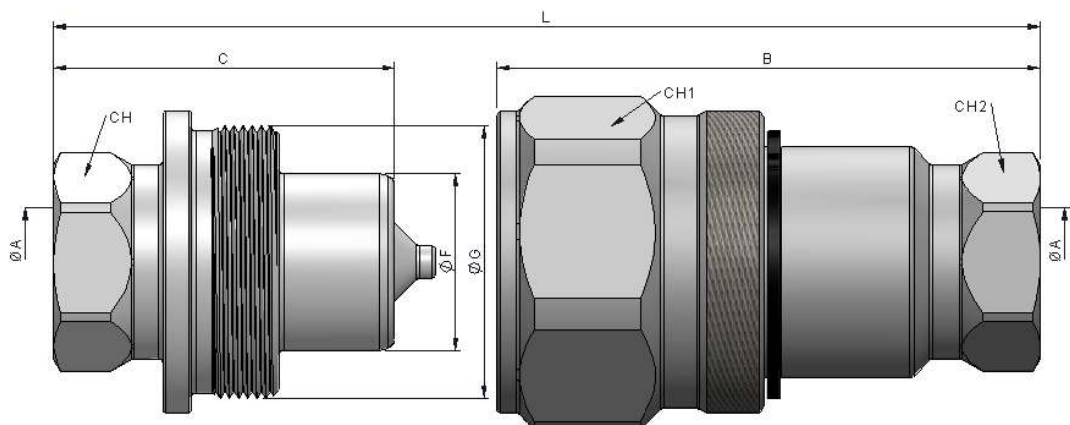
STANDARD MALE MODELS

(S)	ØA	REF.		CH	C	ØF	ØG	L
13	1/2" BSP	203.11113AD		38	49	20	M35x1.5	98
	1/2" NPTF	203.11113BD						

STANDARD FEMALE MODELS

(S)	ØA	REF.		CH2	B	CH1	L
13	1/2" BSP	203.12113AD		27	76	41	98
	1/2" NPTF	203.12113BD					

(S) 20 - 3/4"



STANDARD MALE MODELS

(S)	ØA	REF.		CH	C	ØF	ØG	L
20	3/4" BSP	203.11114AE		32	56	29	M45x1.5	112
	3/4" NPTF	203.11112BE						

STANDARD FEMALE MODELS

(S)	ØA	REF.		CH2	B	CH1	L
20	3/4" BSP	203.12114AE		32	89	50	112
	3/4" NPTF	203.12114BE					



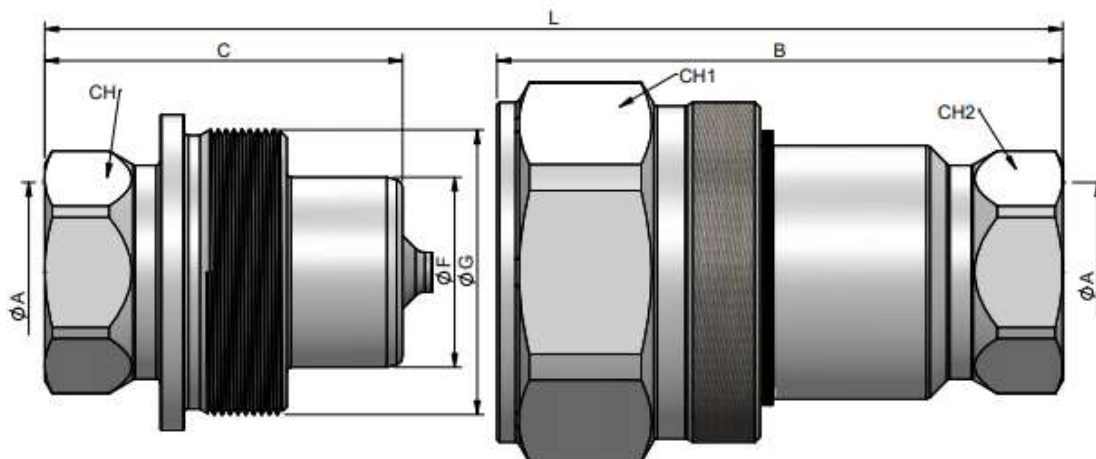


# 203 SERIES TGW

CARBON STEEL



(S) 25 - 1"



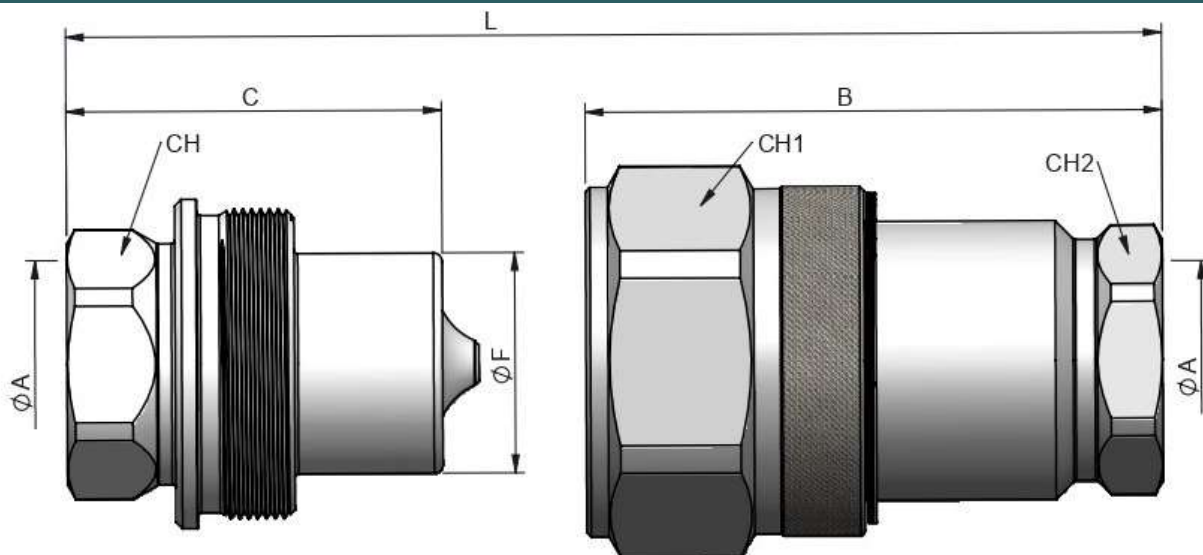
MALE STANDARD MODELS

(S)	ØA	REF.		CH	C	ØF	ØG	L
25	1" BSP	203.11115AF	450	41	68	36	M54x1.5	136
	1" NPTF	203.11115BF						

FEMALE STANDARD MODELS

(S)	ØA	REF.		CH2	B	CH1	L
25	1" BSP	203.12115AF	450	41	107.5	65	136
	1" NPTF	203.12115BF					

(S) 32 - 1 1/4"



MALE STANDARD MODELS

(S)	ØA	REF.		CH	C	ØF	ØG	L
32	1 1/4" BSP	203.11116AG	450	75	85	50	M70x2	160
	1 1/4" NPTF	203.11116BG						

FEMALE STANDARD MODELS

(S)	ØA	REF.		CH2	B	CH1	L
32	1 1/4" BSP	203.12116AG	450	55	130.5	80	160
	1 1/4" NPTF	203.12116BG					

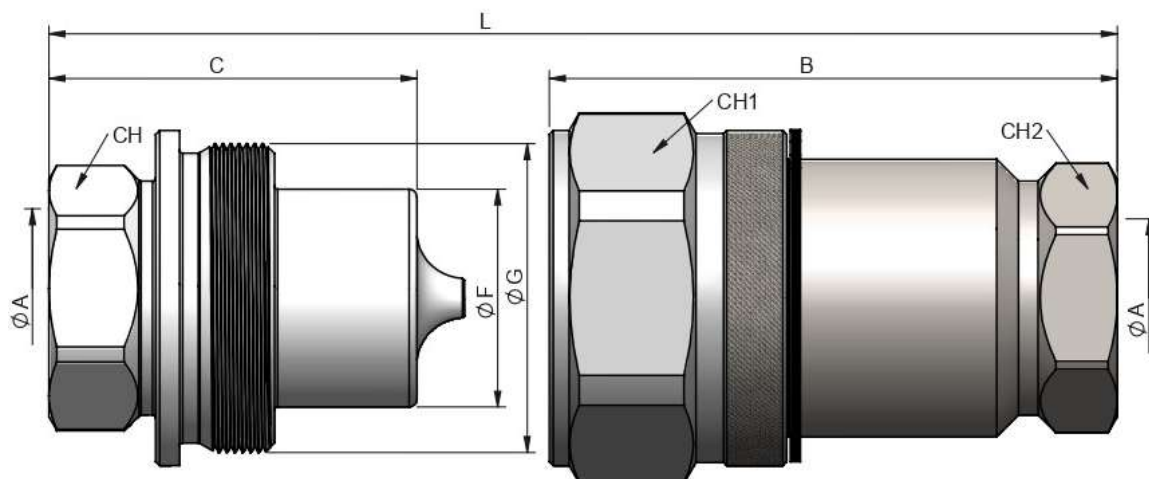


# 203 SERIES TGW

CARBON STEEL



(S) 40 - 1 1/2"



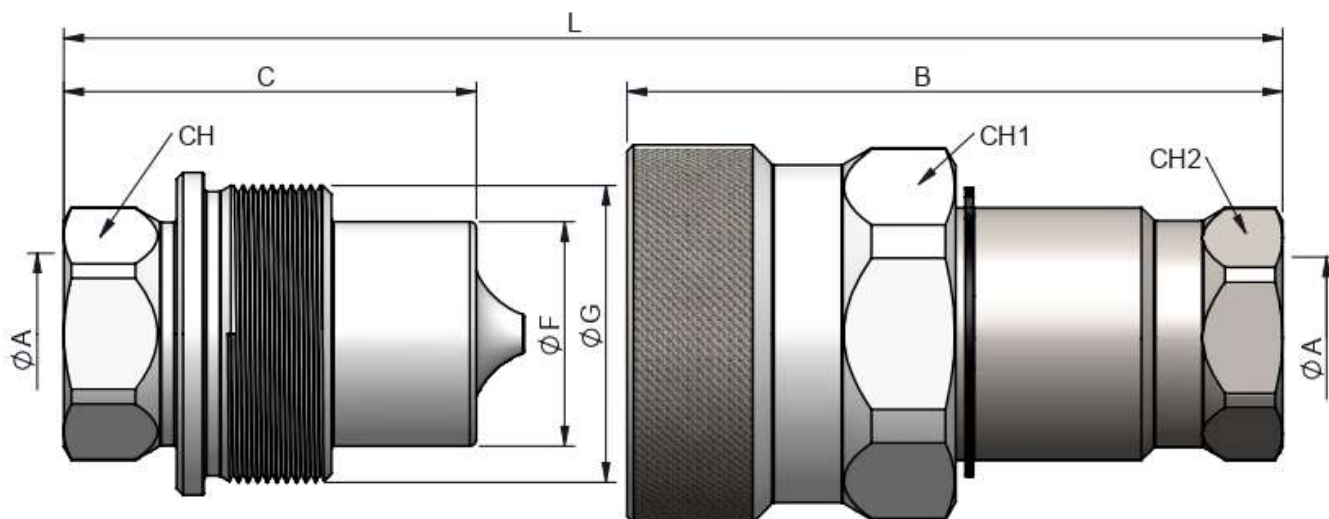
STANDARD MALE MODELS

(S)	ØA	REF.		CH	C	ØF	ØG	L
40	1 1/2" BSP	203.11117AH		60	93	55	M78x1.5	176.5
	1 1/2" NPTF	203.11117BH						

STANDARD FEMALE MODELS

(S)	ØA	REF.		CH2	B	CH1	L
40	1 1/2" BSP	203.12117AH		60	143.5	85	176.5
	1 1/2" NPTF	203.12117BH					

(S) 50 - 2"



STANDARD MALE MODELS

(S)	ØA	REF.		CH	C	ØF	ØG	L
50	2" BSP	203.11118AI		70	128	69.5	M93x3	247
	2" NPTF	203.11118BI						

STANDARD FEMALE MODELS

(S)	ØA	REF.		CH2	B	CH1	L
50	2" BSP	203.12118AI		70	203.5	105	247
	2" NPTF	203.12118BI					



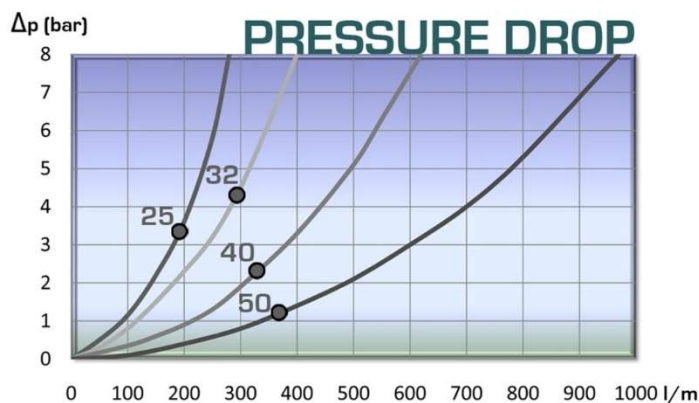
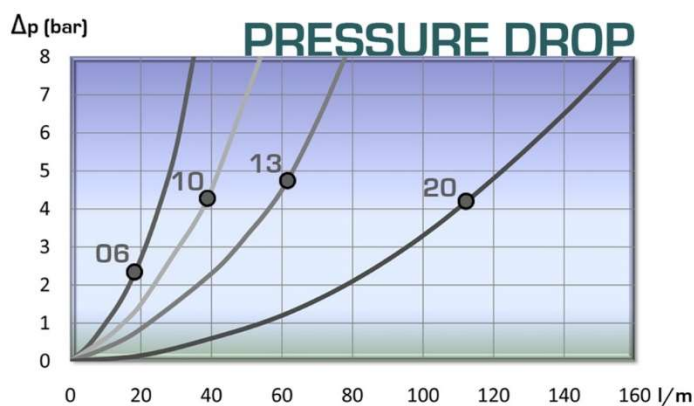
# 203 SERIES TGW

CARBON STEEL

## TECHNICAL DATA

(S)	Rated Flow	Min. Burst Pressure (bar)			Max. Working Pressure
		Male	Female	Connected	
6	18 l/m	1960	1960	1960	980
10	38 l/m	1500	1500	1500	750
13	62 l/m	1500	1500	1500	750
20	116 l/m	1300	1300	1300	650
25	194 l/m	900	900	900	450
32	290 l/m	900	900	900	450
40	450 l/m	600	600	600	300
50	630 l/m	600	600	600	300

Test performed according to ISO 18869

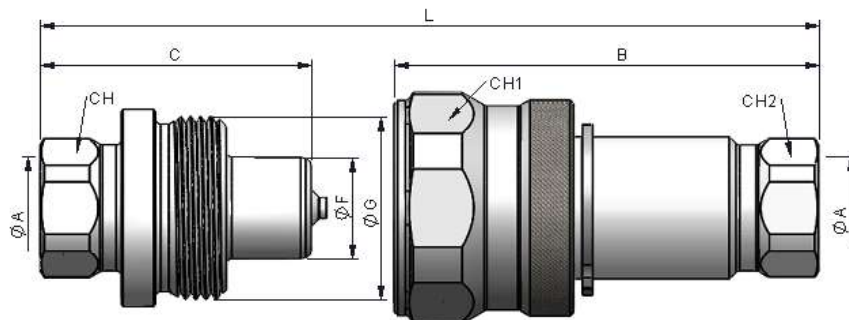




# 203 SERIES TGW SS316



(S) 6 - 1/4"



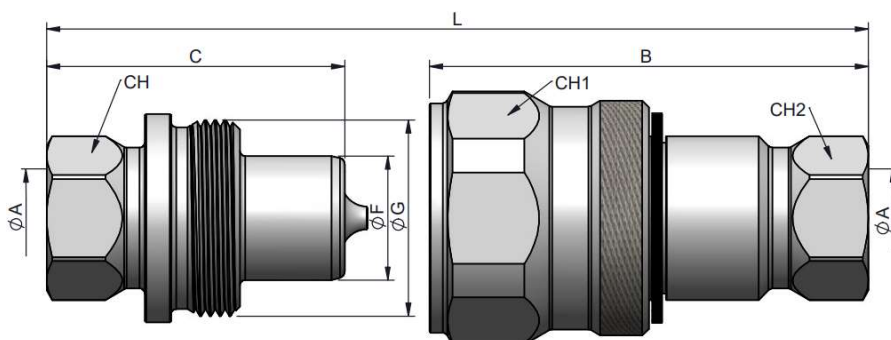
MALE STANDARD MODELS

(S)	ØA	REF.		CH	C	ØF	ØG	L
6	1/4" BSP	203.21121AB		19	40	20	M27x1.5	80
	1/4" NPTF	203.21121BB						

FEMALE STANDARD MODELS

(S)	ØA	REF.		CH2	B	CH1	L
6	1/4" BSP	203.22121AB		19	63	32	80
	1/4" NPTF	203.22121BB					

(S) 10 - 3/8"



MALE STANDARD MODELS

(S)	ØA	REF.		CH	C	ØF	ØG	L
10	3/8" BSP	203.21122AC		22	40.5	20	M30x1.5	81
	3/8" NPTF	203.21122BC						

FEMALE STANDARD MODELS

(S)	ØA	REF.		CH2	B	CH1	L
10	3/8" BSP	203.22122AC		22	67	36	81
	3/8" NPTF	203.22122BC					

203-7

INTEVA reserves the right to make modifications to its products without prior notice. Any external or internal alterations to our products will automatically void the warranty.



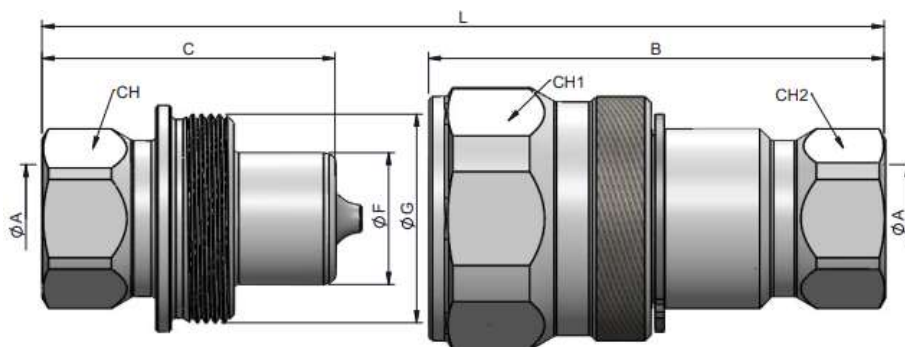




# 203 SERIES TGW SS316



(S) 13 - 1/2"



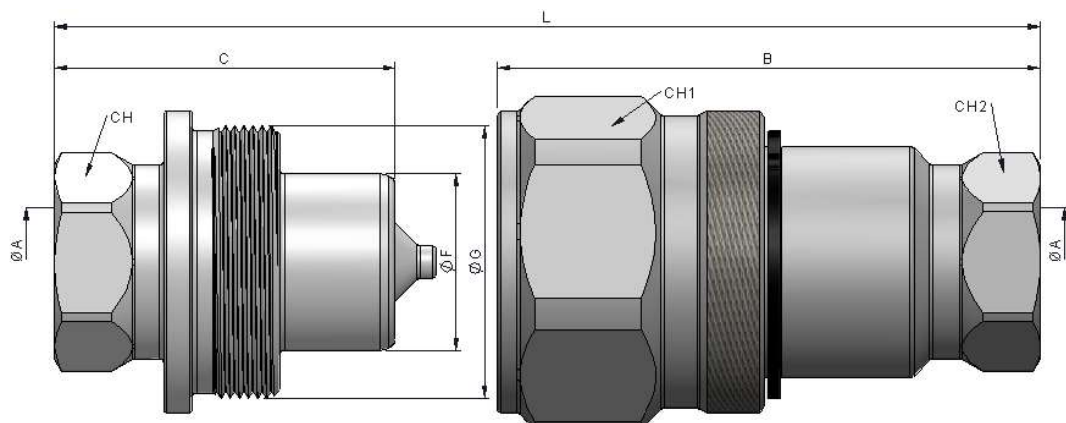
STANDARD MALE MODELS

(S)	ØA	REF.		CH	C	ØF	ØG	L
13	1/2" BSP	203.21123AD		38	49	20	M35x1.5	98
	1/2" NPTF	203.21123BD						

STANDARD FEMALE MODELS

(S)	ØA	REF.		CH2	B	CH1	L
13	1/2" BSP	203.22123AD		27	76	41	98
	1/2" NPTF	203.22123BD					

(S) 20 - 3/4"



STANDARD MALE MODELS

(S)	ØA	REF.		CH	C	ØF	ØG	L
20	3/4" BSP	203.21124AE		32	56	29	M45x1.5	112
	3/4" NPTF	203.21124BE						

STANDARD FEMALE MODELS

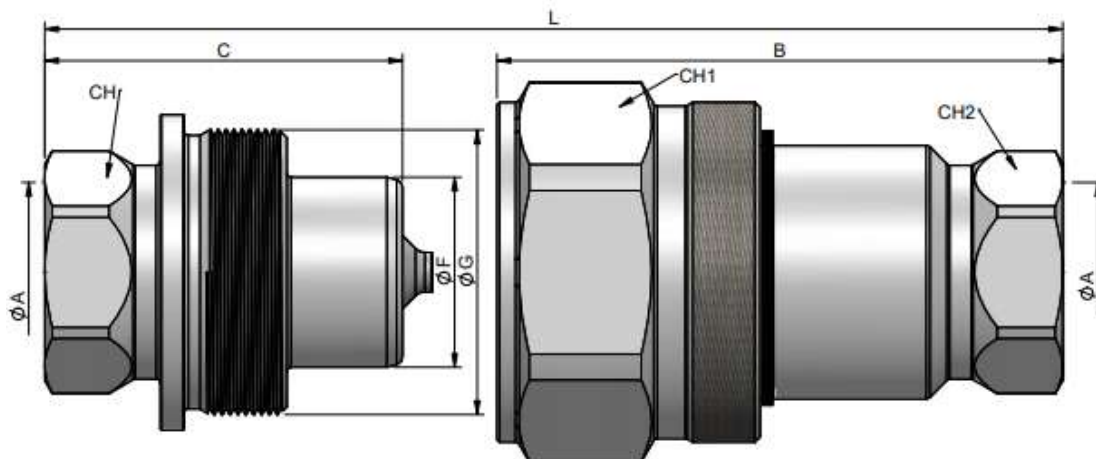
(S)	ØA	REF.		CH2	B	CH1	L
20	3/4" BSP	203.22124AE		32	89	50	112
	3/4" NPTF	203.22124BE					



# 203 SERIES TGW SS316



(S) 25 - 1"



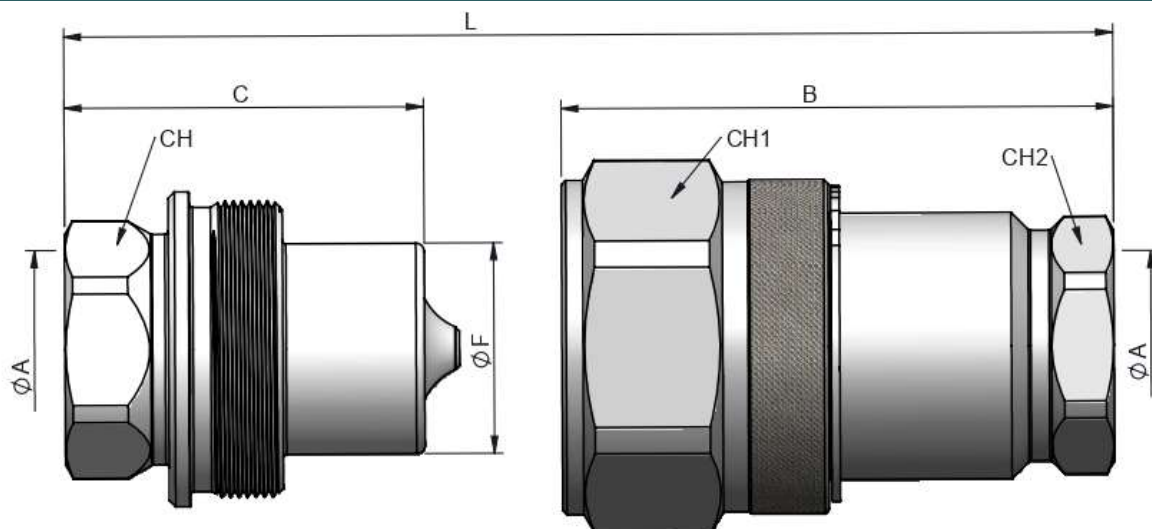
STANDARD MALE MODELS

(S)	ØA	REF.		CH	C	ØF	ØG	L
25	1" BSP	203.21125AF		41	68	36	M54x1.5	136
	1" NPTF	203.21125BF						

STANDARD FEMALE MODELS

(S)	ØA	REF.		CH2	B	CH1	L
25	1" BSP	203.22125AF		41	107.5	65	136
	1" NPTF	203.22125BF					

(S) 32 - 1 1/4"



STANDARD MALE MODELS

(S)	ØA	REF.		CH	C	ØF	ØG	L
32	1 1/4" BSP	203.21126AG		75	85	50	M70x2	160
	1 1/4" NPTF	203.21126BG						

STANDARD FEMALE MODELS

(S)	ØA	REF.		CH2	B	CH1	L
32	1 1/4" BSP	203.22126AG		55	130.5	80	160
	1 1/4" NPTF	203.22126BG					

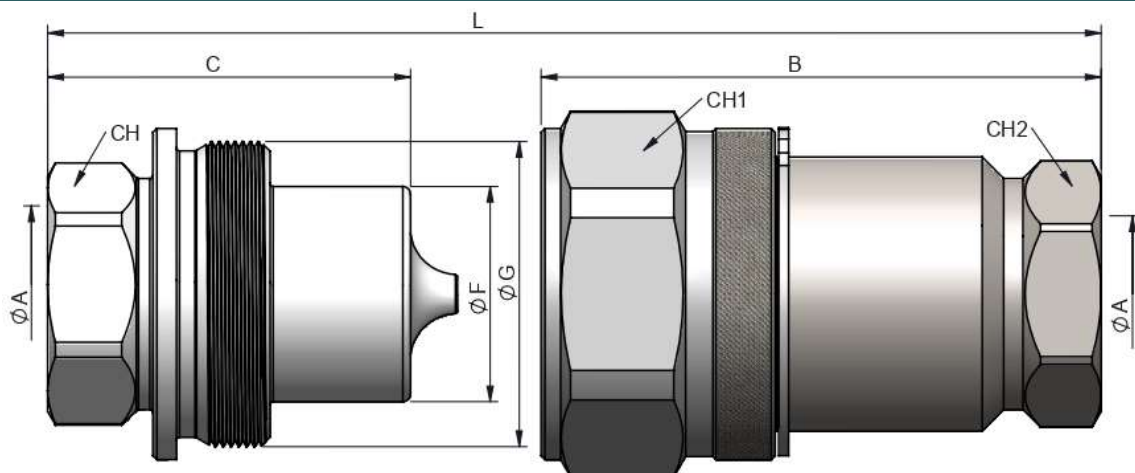


# 203 SERIES TGW



SS316




(S) 40 - 1 1/2"



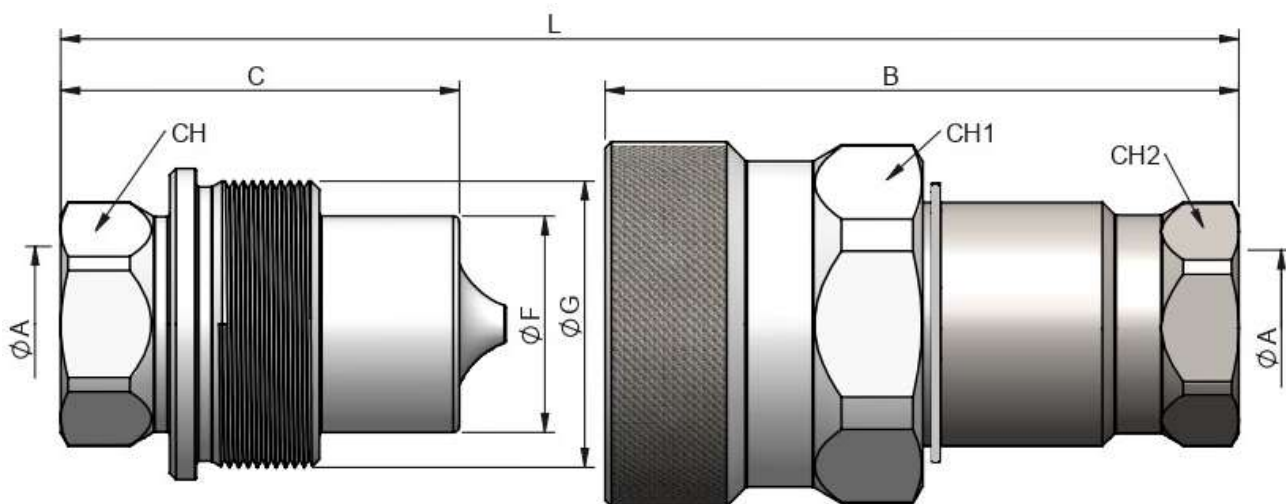
STANDARD MALE MODELS

(S)	ØA	REF.		CH	C	ØF	ØG	L	
40	1 1/2" BSP	203.21127AH		300	60	93	55	M78x1.5	176.5
	1 1/2" NPTF	203.21127BH							



STANDARD FEMALE MODELS

(S)	ØA	REF.		CH2	B	CH1	L
40	1 1/2" BSP	203.22127AH	300	60	143.5	85	176.5
	1 1/2" NPTF	203.22127BH					


(S) 50 - 2"



STANDARD MALE MODELS

(S)	ØA	REF.		CH	C	ØF	ØG	L	
50	2" BSP	203.21128AI		300	70	128	69.5	M93x3	247
	2" NPTF	203.21128BI							

STANDARD FEMALE MODELS

(S)	ØA	REF.		CH2	B	CH1	L
50	2" BSP	203.22128AI	300	70	203.5	105	247
	2" NPTF	203.22128BI					

203-10

INTEVA reserves the right to make modifications to its products without prior notice. Any external or internal alterations to our products will automatically void the warranty.





# 203 SERIES TGW

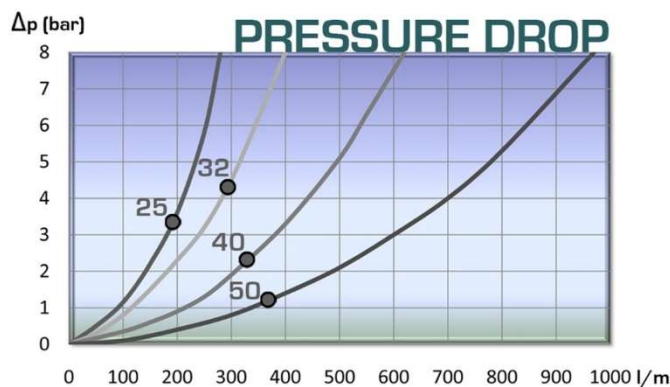
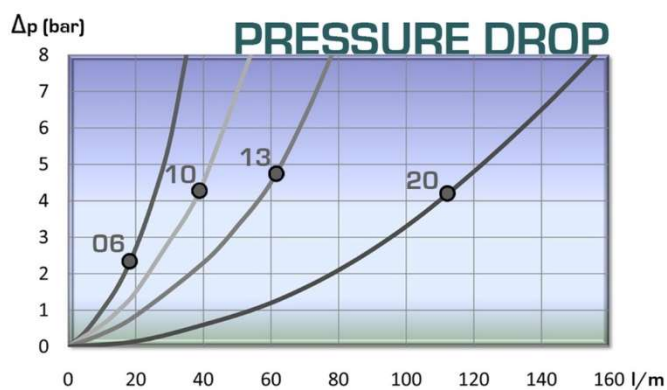
SS316



## TECHNICAL DATA

(S)	Rated Flow	Min. Burst Pressure (bar)			Max. Working Pressure
		Male	Female	Connected	
6	18 l/m	1960	1960	1960	980
10	38 l/m	1500	1500	1500	750
13	62 l/m	1500	1500	1500	750
20	116 l/m	1300	1300	1300	650
25	194 l/m	900	900	900	450
32	290 l/m	900	900	900	450
40	450 l/m	600	600	600	300
50	630 l/m	600	600	600	300

Test performed according to ISO 18869







# 203 SERIES TGW

CAPS &  
PLUGS

INTEVA

Designed to protect the female (coupler) and male (nipple) parts while disconnected.

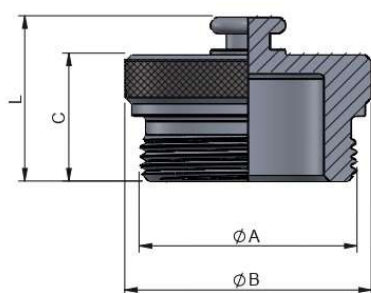
## MODEL REFERENCE

Example:

**203.6404 AA**

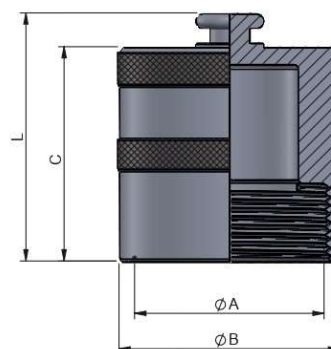
Series	Material	Part	Color	Size (S)	Standard
203.	6 Aluminum	3 Cap 4 Plug	0 Metal	1 6 2 10 3 13 4 20 5 25 6 32 7 40 8 50	1/4" 3/8" 1/2" 3/4" 1" 1 1/4" 1 1/2" 2" AA

## (S) 6 - (S) 50 - ALUMINUM



PLUG

(S)	REF.	ØA	ØB	L
6	203.6301AA	M27x1.5	32	24.5
10	203.6302AA	M30x1.5	35	26.5
13	203.6303AA	M35x1.5	40	26.5
20	203.6304AA	M45x1.5	50	32
25	203.6305AA	M54x1.5	60	38
32	203.6306AA	M70x2	75	45
40	203.6307AA	M78x2	84.5	47
50	203.6308AA	M92x3	117	61



CAP

(S)	REF.	ØA	ØB	L
6	203.6401AA	M27x1.5	32	40
10	203.6402AA	M30x1.5	35	43
13	203.6403AA	M35x1.5	40	41
20	203.6404AA	M45x1.5	50	52
25	203.6405AA	M54x1.5	60	61
32	203.6406AA	M70x2	75	80
40	203.6407AA	M78x2	85	83
50	203.6408AA	M92x3	102	116



# 204 SERIES AEV



Designed for the Spanish market.

## TECHNICAL SPECIFICATIONS

<b>Working Pressure:</b>	Up to 400 Bar	
<b>Materials:</b>	Body:	Carbon Steel EN -10277-3
	O-rings:	NBR / VITON / EPDM
	Back-up-ring:	-
	Springs:	-
	Balls:	-
<b>Available Threads:</b>	BSP / NPTF*	
<b>Closing System:</b>	Poppet Valve or ball	
<b>Connection/Disconnection:</b>	Screw on / off both parts	
<b>Connection Under Pressure:</b>	Not allowed	

**Available Size:** 1/2"

### Working Temperature (O-rings)

	NBR	Viton	EPDM
	+100°C	+200°C	+150°C
	-30°C	-10°C	-40°C

**Sectors:** Agricultural



**Applications:** Designed for Hydraulic Oil (Group II-2014/68/EU)

**Interchange:** INTEVA

*\*Others on request and minimum quantity.*

## MODEL REFERENCE

**Example:**

**204.12113 AD**

Series	Material	Part	Closing	O-rings	Size (S)	Thread
<b>204</b>	<b>1</b> Carbon St.	<b>1</b> Male <b>2</b> Female	<b>0</b> Without <b>1</b> Poppet <b>2</b> Ball	<b>0</b> Without <b>1</b> NBR <b>2</b> VITON <b>3</b> EPDM	<b>3</b> 13 : 1/2"	2 letters (see Thread Table on page 999-1)

**204-1**

INTEVA reserves the right to make modifications to its products without prior notice. Any external or internal alterations to our products will automatically void the warranty.

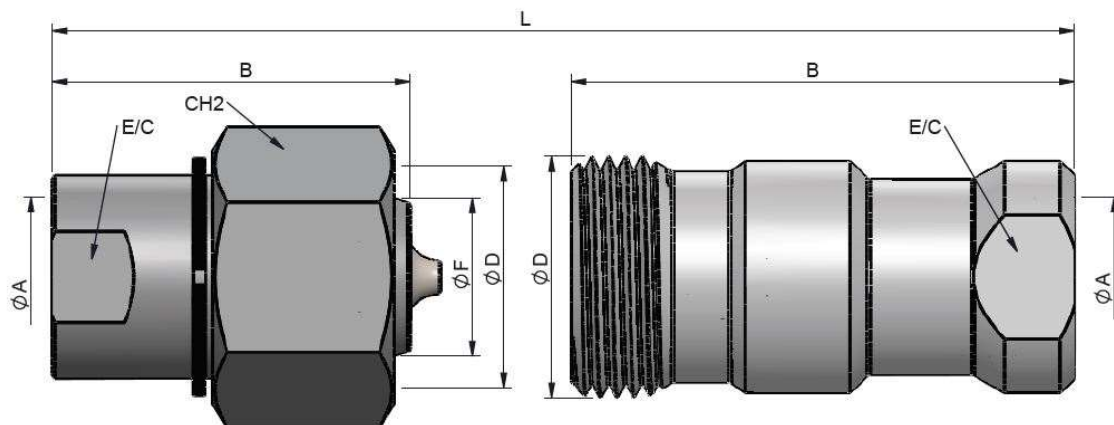




# 204 SERIES AEV



(S) 13 - 1/2"



STANDARD MALE MODELS

(S)	ØA	REF.		E/C	CH2	B	ØF	ØD	L
13	1/2" BSP	204.11113AD	400	25	36	49.5	21.8	30.5	88

STANDARD FEMALE MODELS

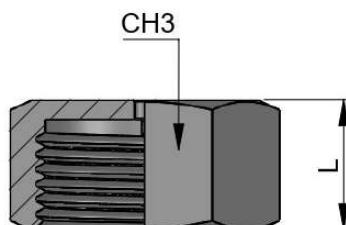
(S)	ØA	REF.		E/C	B	ØD	L
13	1/2" BSP	204.12113AD	400	27	69.5	33	88

## CAP - MODEL REFERENCE

Example:

**204.1333 AA**

Series	Material	Part	Color	Size (S)	Type
204.	1 Carbon St.	4 Cap	0 Metal	3 13 : 1/2"	AA



CAP

(S)	REF.	CH3	L
13	204.1333AA	36	20



# 205 SERIES STG



Manufactured according to ISO 14541 (1/4" to 3/4")

## TECHNICAL SPECIFICATIONS

<b>Features:</b>	Interchangeable according to ISO 14541	
<b>Working Pressure:</b>	Up to 450 Bar	
<b>Materials:</b>	Body:	Carbon Steel EN -10277-3
	O-rings:	NBR / VITON / EPDM
	Back-up-ring:	PTFE
	Springs:	EN 10270-1/SH
	Balls:	-
<b>Available Threads:</b>	BSP / NPTF / ISO 9974 / SAE J514*	
<b>Closing System:</b>	Poppet Valve	
<b>Connection/Disconnection:</b>	Screw on / off both parts	
<b>Connection Under Pressure:</b>	Residual Pressure	

**Available Size:** 1/4" a 1 1/4"

### Working Temperature (O-rings)

	NBR	Viton	EPDM
	+100°C	+200°C	+150°C
	-30°C	-10°C	-40°C

**Sectors:** Industrial / Agricultural / Construction machinery



**Applications:** Designed for Hydraulic Oil (Group II-2014/68/EU)

**Interchange:** FASTER CVV / ARGUS HDK  
VOSWINKEL HS

*\*Others on request and minimum quantity.*

## MODEL REFERENCE

**Example:**

# 205.12115 AF

Series	Material	Part	Closing	O-rings	Size (S)	Thread
205.	1 Carbon St.	1 Male	0 Without	0 Without	1 6	1/4"
	2 SS316*	2 Female	1 Poppet	1 NBR	2 10	3/8"
				2 VITON	3 13	1/2"
				3 EPDM	4 20	3/4"
					5 25	1"
					6 32	1 1/4"

2 letters (see Thread Table on page 999-1)

\*Available in stainless steel on request

## 205-1

INTEVA reserves the right to make modifications to its products without prior notice. Any external or internal alterations to our products will automatically void the warranty.

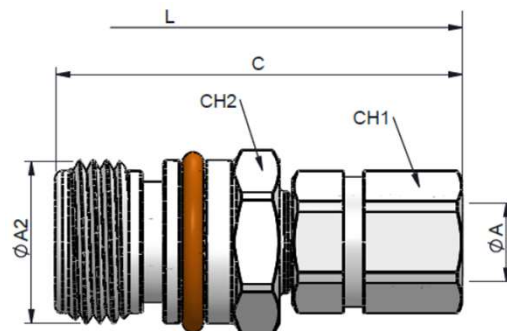
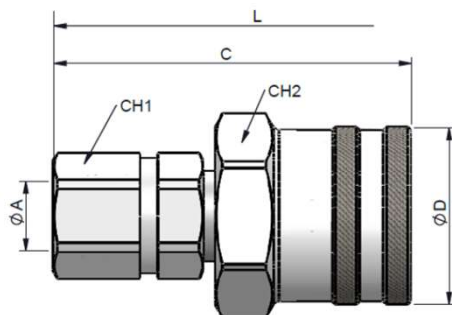




# 205 SERIES STG

CARBON STEEL  
FEMALE THREAD  
BSP / NPTF / ISO 9974 (DIN 3852)

(S) 6 - 1/4"



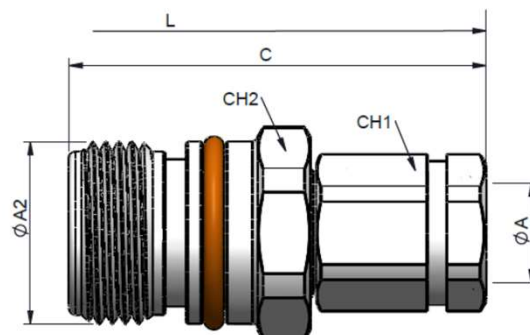
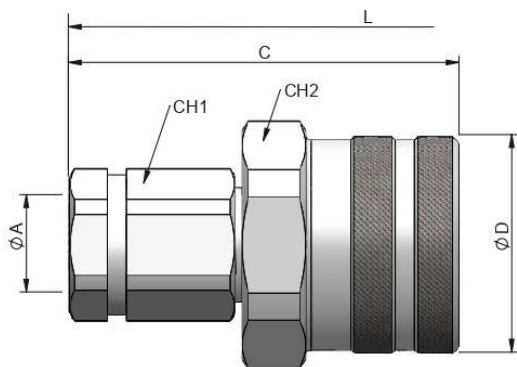
STANDARD MALE MODELS

(S)	ØA	REF.		CH1	CH2	C	ØD	L
6	1/4" BSP	205.11111AB	450	20	30	59.50	34	94
	1/4" NPTF	205.11111BB						
	M14x1.5	205.11111NC						

STANDARD FEMALE MODELS

(S)	ØA	REF.		CH1	CH2	C	ØA2	L
6	1/4" BSP	205.12111AB	450	20	24	60	Rd 24x2	94
	1/4" NPTF	205.12111BB						
	M14x1.5	205.12111NC						

(S) 10 - 3/8"



STANDARD MALE MODELS

(S)	ØA	REF.		CH1	CH2	C	ØD	L
10	1/4" BSP	205.11112AB	450	22	36	61	34	98
	3/8" BSP	205.11112AC						
	3/8" NPTF	205.11112BC						
	M16x1.5	205.11112ND						

STANDARD FEMALE MODELS

(S)	ØA	REF.		CH1	CH2	C	ØA2	L
10	1/4" BSP	205.12112AB	450	22	30	64	Rd 28x2	98
	3/8" BSP	205.12112AC						
	3/8" NPTF	205.12112BC						
	M16x1.5	205.12112ND						

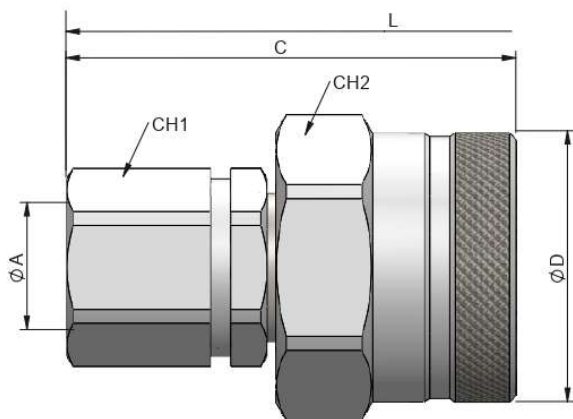




# 205 SERIES STG

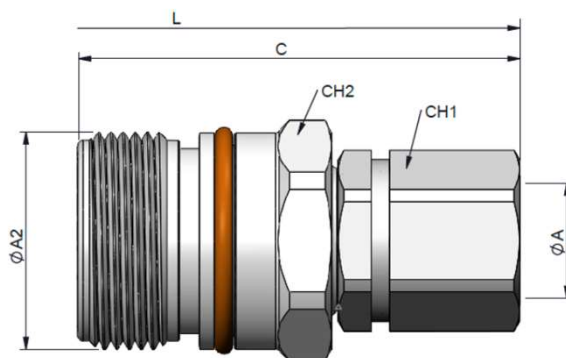
CARBON STEEL  
FEMALE THREAD  
BSP / NPTF / ISO 9974 (DIN 3852)

## (S) 13 - 1/2"



STANDARD MALE MODELS

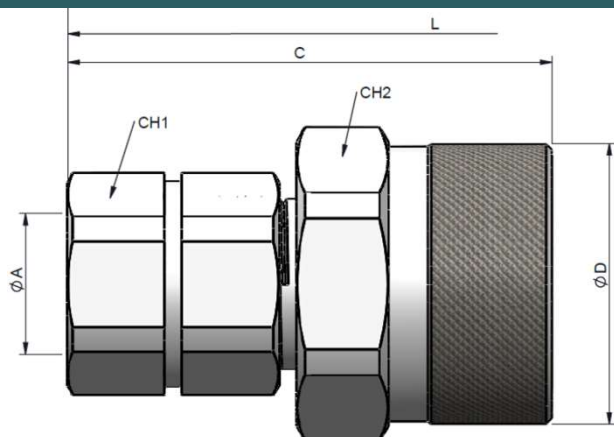
(S)	ØA	REF.		CH1	CH2	C	ØD	L
13	3/8" BSP	205.11113AC		27	41	67	41.80	112
	1/2" BSP	205.11113AD						
	1/2" NPTF	205.11113BD						
	M18x1.5	205.11113NE						
	M22x1.5	205.11113NG						
	3/4"- 16h UNF	205.11113GF						
	7/8"- 14h UNF	205.11113GH						



STANDARD FEMALE MODELS

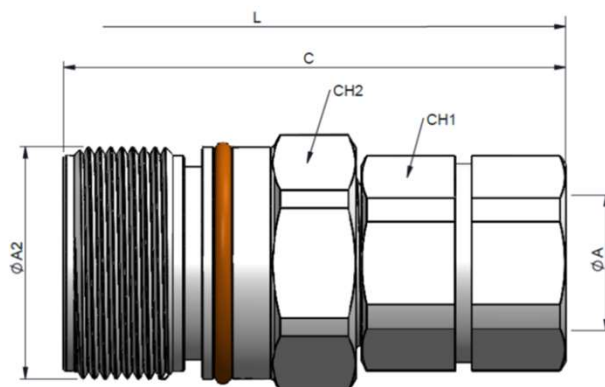
(S)	ØA	REF.		CH1	CH2	C	ØA2	L
13	3/8" BSP	205.12113AC		27	36	73	Rd 36x2	112
	1/2" BSP	205.12113AD						
	1/2" NPTF	205.12113BD						
	M18x1.5	205.12113NE						
	M22x1.5	205.12113NG						
	3/4"- 16h UNF	205.12113GF						
	7/8"- 14h UNF	205.12113GH						

## (S) 20 - 3/4"



STANDARD MALE MODELS

(S)	ØA	REF.		CH1	CH2	C	ØD	L
20	3/4" BSP	205.11114AE		36	50	81	48	140
	3/4" NPTF	205.11114BE						
	M22x1.5	205.11114NG						



STANDARD FEMALE MODELS

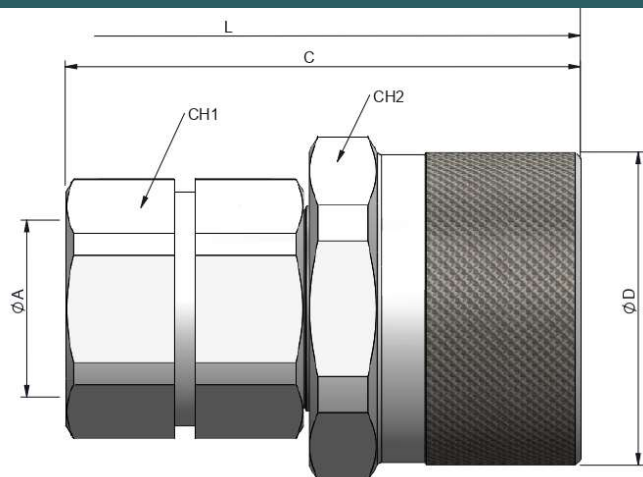
(S)	ØA	REF.		CH1	CH2	C	ØA2	L
20	3/4" BSP	205.12114AE		36	42	91	Rd 42x2	140
	3/4" NPTF	205.12114BE						
	M22x1.5	205.12114NG						



# 205 SERIES STG

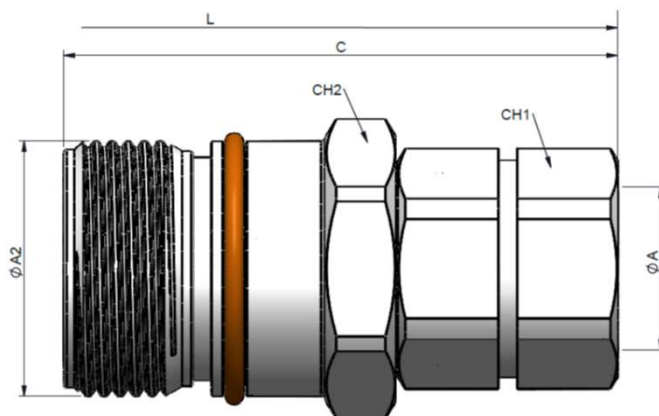
CARBON STEEL  
FEMALE THREAD  
BSP / NPTF / ISO 9974 (DIN 3852)

## (S) 25 - 1"



STANDARD MALE MODELS

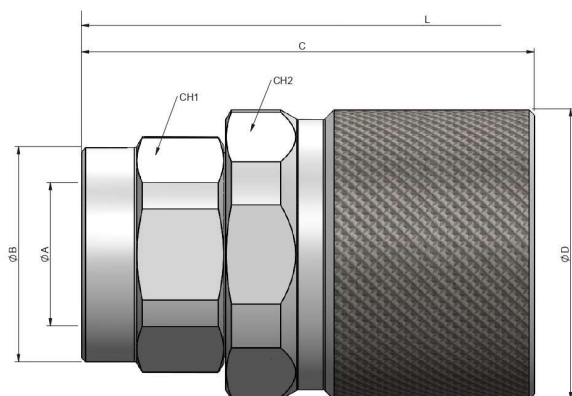
(S)	ØA	REF.		CH1	CH2	C	ØD	L
25	3/4" BSP	205.11115AE		300	41	55	87.5	59.80
	1" BSP	205.11115AF						
	1" NPTF	205.11115BF						



STANDARD FEMALE MODELS

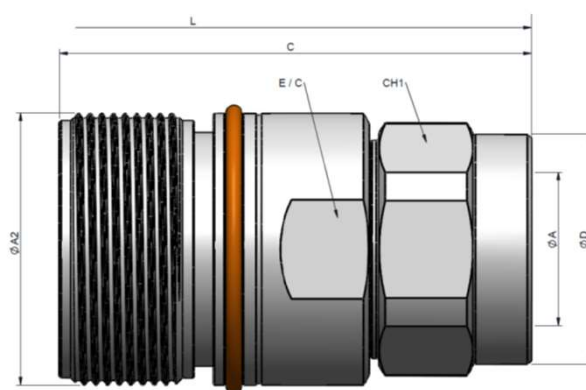
(S)	ØA	REF.		CH1	CH2	C	ØA2	L
25	3/4" BSP	205.12115AE		300	41	50	100	Rd 48x3
	1" BSP	205.12115AF						
	1" NPTF	205.12115BF						

## (S) 32 - 1 1/4"



STANDARD MALE MODELS

(S)	ØA	REF.		CH1	CH2	ØB	C	ØD	L
32	1 1/4" BSP	205.11116AG		410	60	74	59	124	79
	1 1/4" NPTF	205.11116BG							
	1 1/2" BSP	205.11116AH							
	1 1/2" NPTF	205.11116BH							



STANDARD FEMALE MODELS

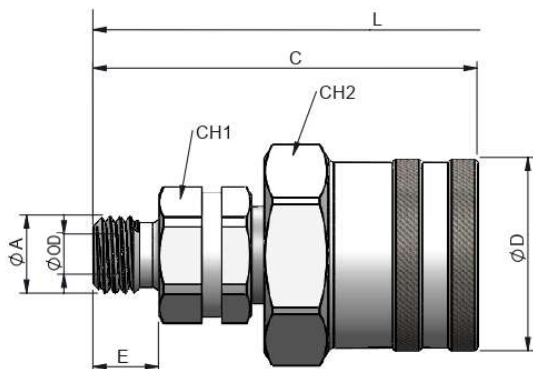
(S)	ØA	REF.		CH1	E/C	C	ØD	ØA2	L
32	1 1/4" BSP	205.12116AG		410	55	60	150	59	Rd 70x3
	1 1/4" NPTF	205.12116BG							
	1 1/2" BSP	205.12116AH							
	1 1/2" NPTF	205.12116BH							




# 205 SERIES STG

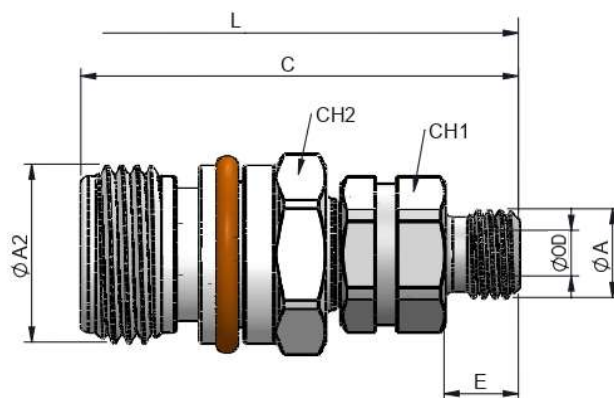
CARBON STEEL  
MALE THREAD  
METRIC - DIN 2353 (ISO 8434-1)

(S) 6 - 1/4"




STANDARD MALE MODELS

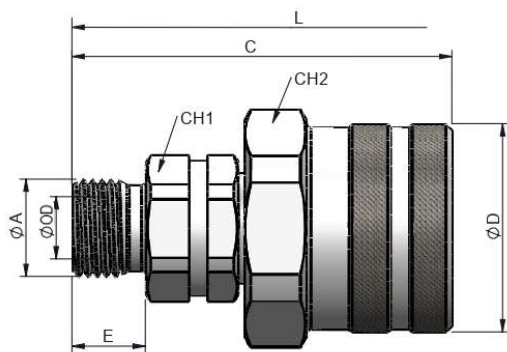
(S)	ØA	OD	REF.		CH1	CH2	C	ØD	E	L
6	M12x1.5	6L	205.11111JB	450	20	30	58.5	29.5	10	91.3
	M14x1.5	8L	205.11111JC							





STANDARD FEMALE MODELS

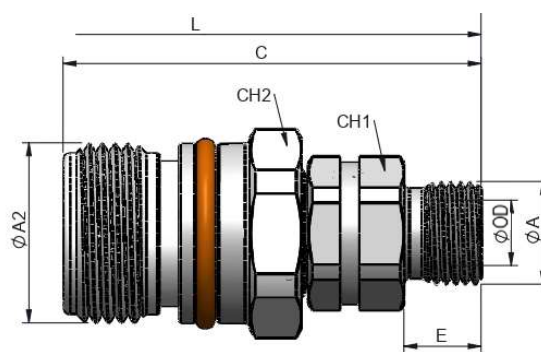
(S)	ØA	OD	REF.		CH1	CH2	C	ØA2	E	L
6	M12x1.5	6L	205.12111JB	450	20	24	59	Rd 24x2	10	91.3
	M14x1.5	8L	205.12111JC							

(S) 10 - 3/8"





STANDARD MALE MODELS

(S)	ØA	OD	REF.		CH1	CH2	C	ØD	E	L	
10	3/8" BSP	*	205.11112AN		450	22	36	62.1	34	12	96
	M14x1.5	8L	205.11112JC								
	M16x1.5	10L	205.11112JD								
	M16x1.5	8S	205.11112KD								
	M18x1.5	10S	205.11112KE								
	M20x1.5	12S	205.11112KF								



STANDARD FEMALE MODELS

(S)	ØA	OD	REF.		CH1	CH2	C	ØA2	E	L
10	3/8" BSP	*	205.12112AN		22	24	63	Rd 28x2	12	96
	M14x1.5	8L	205.12112JC							
	M16x1.5	10L	205.12112JD							
	M16x1.5	8S	205.12112KD							
	M18x1.5	10S	205.12112KE							
	M20x1.5	12S	205.12112KF							

205-5

INTEVA reserves the right to make modifications to its products without prior notice. Any external or internal alterations to our products will automatically void the warranty.



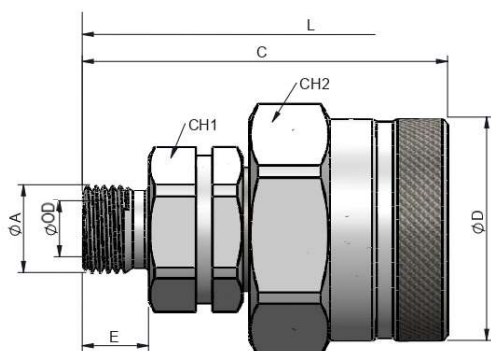
v11



# 205 SERIES STG

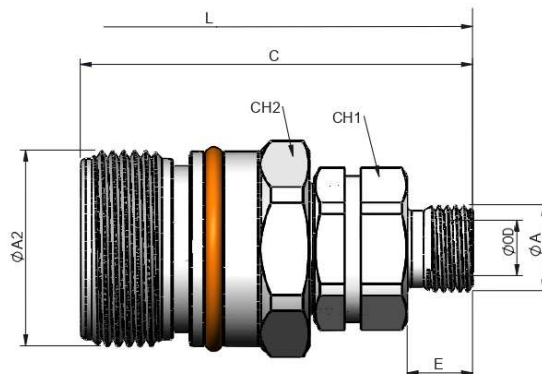
CARBON STEEL  
MALE THREAD  
METRIC - DIN 2353 (ISO 8434-1)

## (S) 13 - 1/2"



STANDARD MALE MODELS

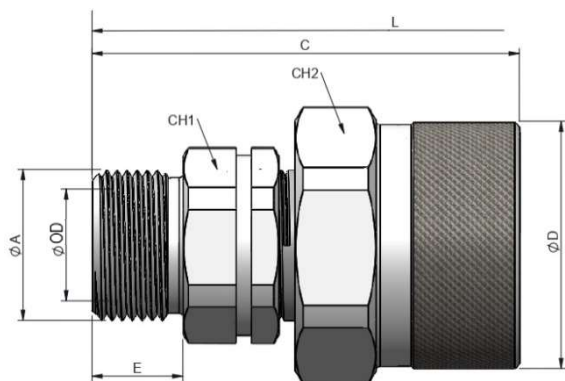
(S)	ØA	OD	REF.		CH1	CH2	C	ØD	E	L
13	M14x1.5	8L	205.11113JC		400	27	41	63.30	40.5	12
	M16x1.5	10L	205.11113JD							
	M18x1.5	12L	205.11113JE							
	M22x1.5	15L	205.11113JG							
	M26x1.5	18L	205.11113JI							
	M18x1.5	10S	205.11113KE							
	M20x1.5	12S	205.11113KF							
	M22x1.5	14S	205.11113KG							
	M24x1.5	16S	205.11113KH							



STANDARD FEMALE MODELS

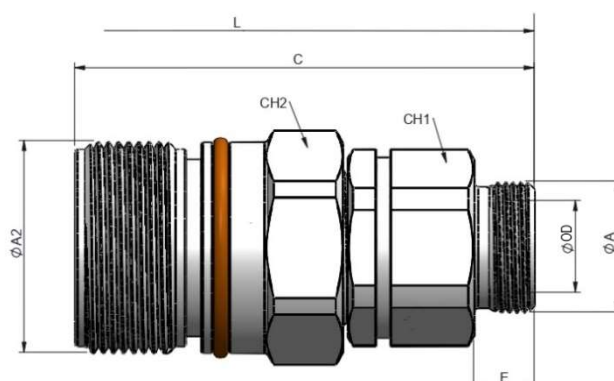
(S)	ØA	OD	REF.		CH1	CH2	C	ØA2	E	L
13	M14x1.5	8L	205.12113JC		400	27	32	66	Rd 36x2	12
	M16x1.5	10L	205.12113JD							
	M18x1.5	12L	205.12113JE							
	M22x1.5	15L	205.12113JG							
	M26x1.5	18L	205.12113JI							
	M18x1.5	10S	205.12113KE							
	M20x1.5	12S	205.12113KF							
	M22x1.5	14S	205.12113KG							
	M24x1.5	16S	205.12113KH							

## (S) 20 - 3/4"



STANDARD MALE MODELS

(S)	ØA	OD	REF.		CH1	CH2	C	ØD	E	L
20	M18x1.5	12I	205.11114JE		400	36	41	78	48	119
	M22x1.5	15L	205.11114JG							124
	M26x1.5	18L	205.11114JI							136
	M30x2	22L	205.11114JJ				72		12	119
	M22x1.5	14S	205.11114KG							119
	M24x1.5	16S	205.11114KH							119
	M30x2	20S	205.11114KJ				76		16	127



STANDARD FEMALE MODELS

(S)	ØA	OD	REF.		CH1	CH2	C	ØA2	E	L
20	M18x1.5	12I	205.12114JE		400	36	42	84	Rd 42x2	119
	M22x1.5	15L	205.12114JG							127
	M26x1.5	18L	205.12114JI							131
	M30x2	22L	205.12114JJ				78			119
	M22x1.5	14S	205.12114KG							119
	M24x1.5	16S	205.12114KH							119
	M30x2	20S	205.12114KJ				82		16	127

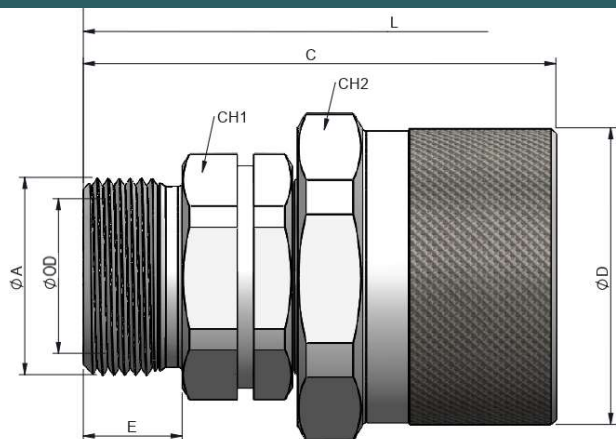






# 205 SERIES STG

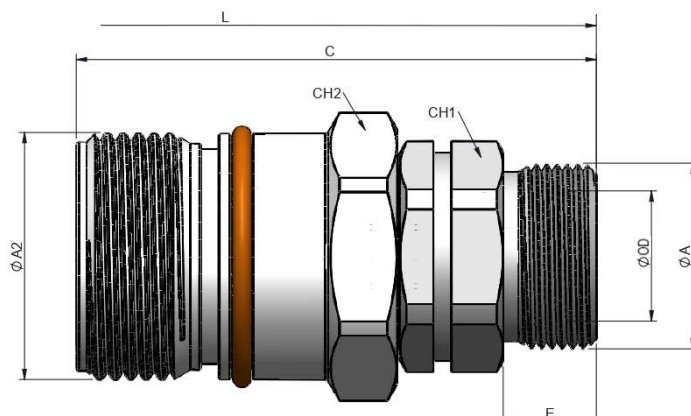
CARBON STEEL  
MALE THREAD  
METRIC - DIN 2353 (ISO 8434-1)

## (S) 25 - 1"




STANDARD MALE MODELS

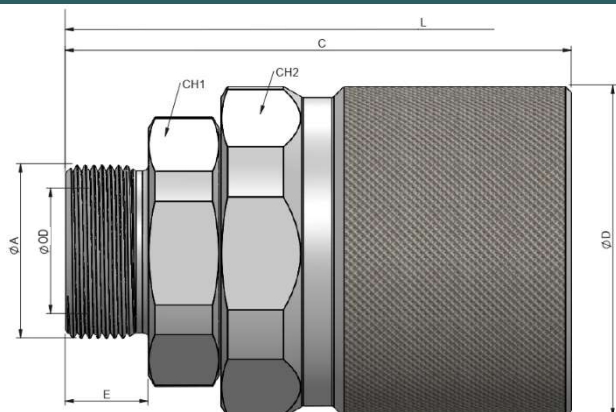
(S)	ØA	OD	REF.		CH1	CH2	C	ØD	E	L
25	M26x1.5	18L	205.11115JI		41	55	70.50	59.80	12	146
	M30x2	22L	205.11115JJ						18	
	M36x2	28L	205.11115JK						16	
	M45x2	35L	205.11115JM						18	
	M30x2	20S	205.11115KJ		46	70.50	18		146	
	M36x2	25S	205.11115KK							
	M42x2	30S	205.11115KL							
	M52x2	38S	205.11115KN							
			55			20	150			



STANDARD FEMALE MODELS

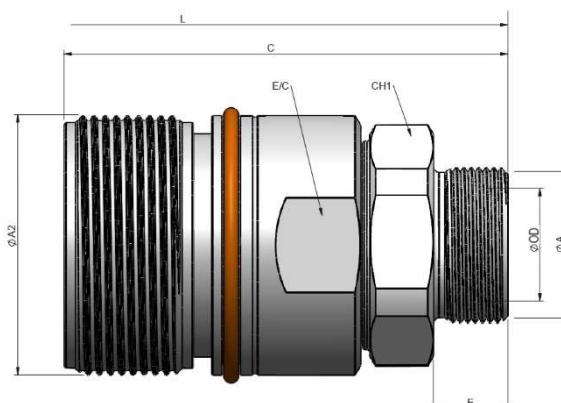
(S)	ØA	OD	REF.		CH1	CH2	C	ØA2	E	L
25	M26x1.5	18L	205.12115JI	300	41	41	91	Rd 48x3	12	146
	M30x2	22L	205.12115JJ				97		18	
	M36x2	28L	205.12115JK				97			
	M45x2	35L	205.12115JM				95			
	M30x2	20S	205.12115KJ		46		97			16
	M36x2	25S	205.12115KK				18			
	M42x2	30S	205.12115KL						20	
	M52x2	38S	205.12115KN							55

## (S) 32 - 1 1/4"



STANDARD MALE MODELS

(S)	ØA	OD	REF.		CH1	CH2	C	ØD	E	L
32	M42x2	30S	205.11116KL	410	50	74	143	79	20	243.8
	M52x2	38S	205.11116KN		55					



STANDARD FEMALE MODELS

(S)	ØA	OD	REF.		CH1	E/C	C	ØA2	E	L
32	M42x2	30S	205.12116KL	410	50	60	151	Rd 70x3	20	243.8
	M52x2	38S	205.12116KN		55					

205-7

INTEVA reserves the right to make modifications to its products without prior notice. Any external or internal alterations to our products will automatically void the warranty.



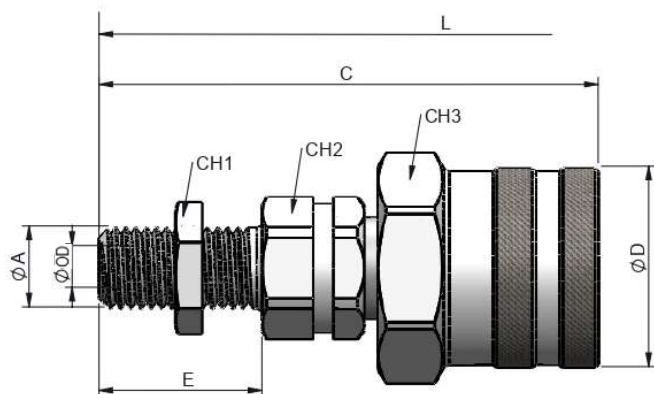




# 205 SERIES STG

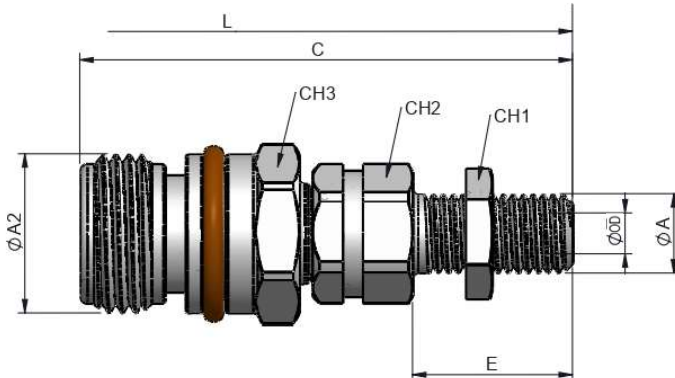
CARBON STEEL  
BULKHEAD MALE THREAD  
METRIC – DIN 2353 (ISO 8434-1)

(S) 6 - 1/4"



STANDARD MALE MODELS

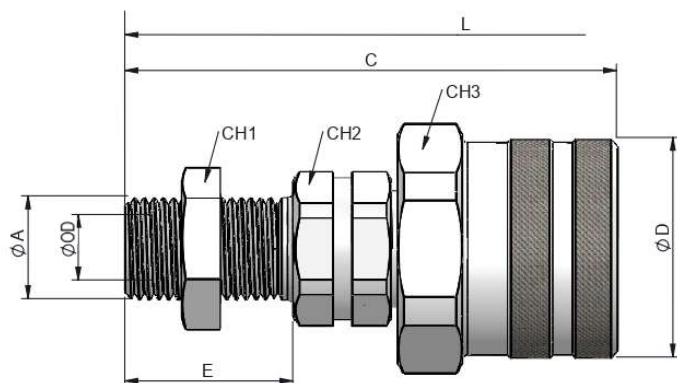
(S)	ØA	OD	REF.		CH1	CH2	CH3	C	ØD	E	L
6	M12x1.5	6L	205.11111LB	450	17	19	30	73.50	29.5	24	121
	M14x1.5	8L	205.11111LC		19			80.50		34	135



STANDARD FEMALE MODELS

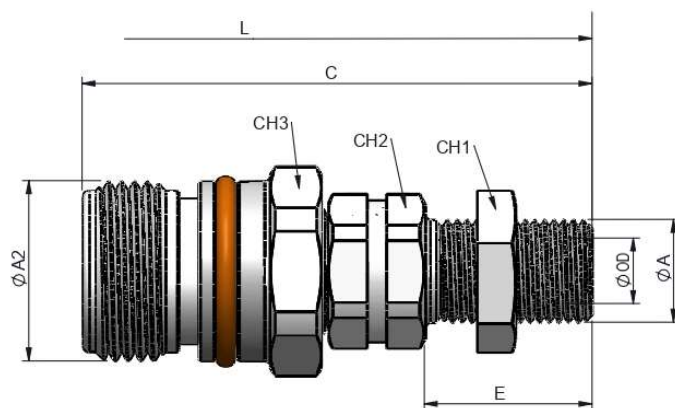
(S)	ØA	OD	REF.		CH1	CH2	CH3	C	ØA2	E	L
6	M12x1.5	6L	205.12111LB	450	17	19	24	74	Rd 24x2	24	121
	M14x1.5	8L	205.12111LC		19			81		34	135

(S) 10 - 3/8"



STANDARD MALE MODELS

(S)	ØA	OD	REF.		CH1	CH2	CH3	C	ØD	E	L
10	M14x1.5	8L	205.11112LC	450	20	22	30	81.50	34	26	127.
	M16x1.5	10L	205.11112LD		22			65.20			
	M16x1.5	8S	205.11112MD		24			75.20			
	M18x1.5	10S	205.11112ME		22						
	M20x1.5	12S	205.11112MF		22						



STANDARD FEMALE MODELS

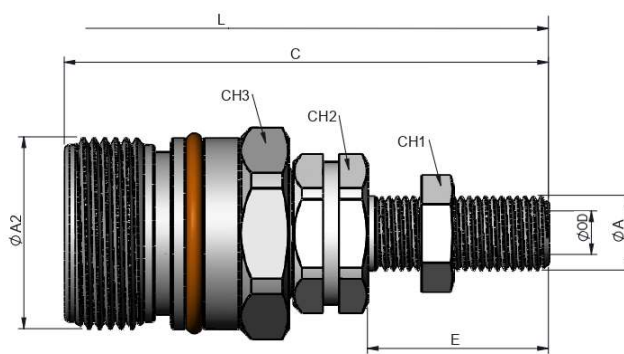
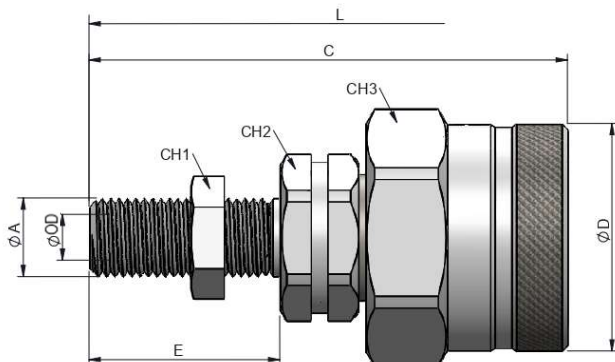
(S)	ØA	OD	REF.		CH1	CH2	CH3	C	ØA2	E	L
10	M14x1.5	8L	205.12112LC	450	20	22	24	85	Rd 28x2	34	152
	M16x1.5	10L	205.12112LD		22			77		26	127
	M16x1.5	8S	205.12112MD		24			780		27	138
	M18x1.5	10S	205.12112ME		22						
	M20x1.5	12S	205.12112MF		22						



# 205 SERIES STG

CARBON STEEL  
BULKHEAD MALE THREAD  
METRIC – DIN 2353 (ISO 8434-1)

## (S) 13 - 1/2"



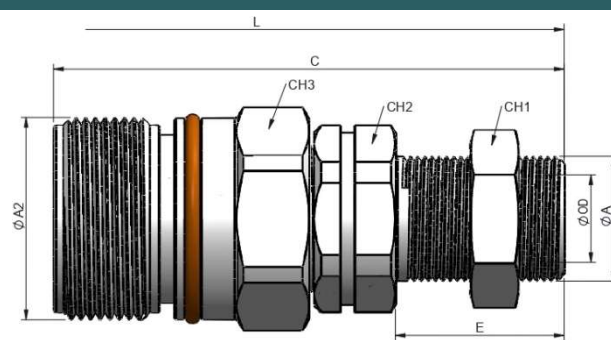
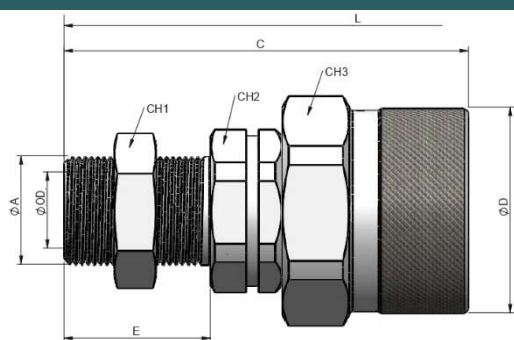
### STANDARD MALE MODELS

(S)	ØA	OD	REF.		CH1	CH2	CH3	C	ØD	E	L
13	M14x1.5	8L	205.11113LC	400	20			85.50		34	156.5
	M16x1.5	10L	205.11113LD		22			86.50		35	157.5
	M18x1.5	12L	205.11113LE		24			75.50		24	136.5
	M22x1.5	15L	205.11113LG		27			86.50		33	157.5
	M26x1.5	18L	205.11113LI		30	27	36	86.50	41.8	33	157.5
	M18x1.5	10S	205.11113ME		24			75.50		24	136.5
	M20x1.5	12S	205.11113MF		22						
	M22x1.5	14S	205.11113MG		27			86.50		35	157.5
	M24x1.5	16S	205.11113MH		30						

### STANDARD FEMALE MODELS

(S)	ØA	OD	REF.		CH1	CH2	CH3	C	ØA2	E	L
13	M14x1.5	8L	205.12113LC	400	20			88		34	156.5
	M16x1.5	10L	205.12113LD		22			89		35	157.5
	M18x1.5	12L	205.12113LE		24			78		24	136.5
	M22x1.5	15L	205.12113LG		27			89	Rd36 x2	35	157.5
	M26x1.5	18L	205.12113LI		30	27	32	89	Rd36 x2	35	157.5
	M18x1.5	10S	205.12113ME		24			78		24	136.5
	M20x1.5	12S	205.12113MF		22						
	M22x1.5	14S	205.12113MG		27			88		35	157.5
	M24x1.5	16S	205.12113MH		30						

## (S) 20 - 3/4"



### STANDARD MALE MODELS

(S)	ØA	OD	REF.		CH1	CH2	CH3	C	ØD	E	L
20	M18x1.5	12L	205.11114LE	400	24			86		26	157
	M22x1.5	15L	205.11114LG		27			93		33	171
	M26x1.5	18L	205.11114LI		30	36	41	94	48	34	173
	M30x2	22L	205.11114LJ		36			89		29	173
	M24x1.5	16S	205.11114MH		30			89		29	173
	M30x2	20S	205.11114MJ		36			96		36	163

### STANDARD FEMALE MODELS

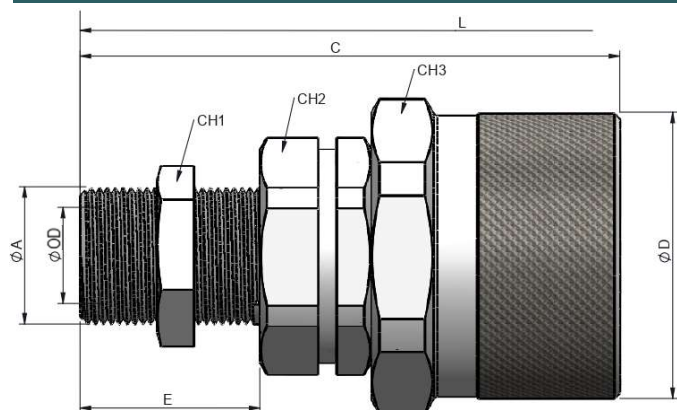
(S)	ØA	OD	REF.		CH1	CH2	CH3	C	ØA2	E	L
20	M18x1.5	12L	205.12114LE	400	24			92		26	157
	M22x1.5	15L	205.12114LG		27			93		33	171
	M26x1.5	18L	205.12114LI		30	36	36	99	Rd42 x2	34	173
	M30x2	22L	205.12114LJ		36			100		29	173
	M24x1.5	16S	205.12114MH		30			100		29	173
	M30x2	20S	205.12114MJ		36			95		36	163



# 205 SERIES STG

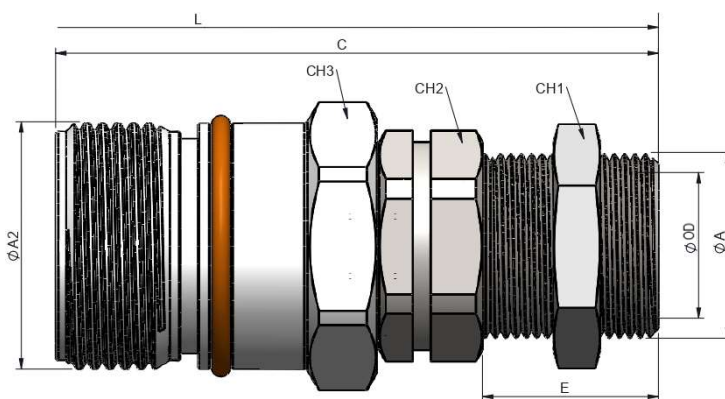
CARBON STEEL  
BULKHEAD MALE THREAD  
METRIC – DIN 2353 (ISO 8434-1)

## (S) 25 - 1"



STANDARD MALE MODELS

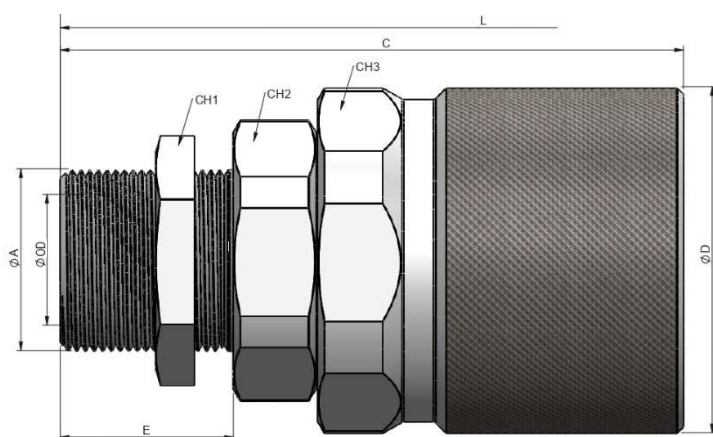
(S)	ØA	OD	REF.		CH1	CH2	CH3	C	ØD	E	L
25	M26x1.5	18L	205.11115LI	300	30	41	55	99.50	59.8	33	185.5
	M30x2	22L	205.11115LJ		36			100.5		34	187.5
	M36x2	28L	205.11115LK		41			102.5		36	191.5
	M45x2	35L	205.11115LM		55			101.5		35	189.5
	M30x2	20S	205.11115MJ		36			104.5		38	195.5
	M36x2	25S	205.11115MK		41			106.5		40	199.5
	M42x2	30S	205.11115ML		50						
	M52x2	38S	205.11115MN		65						



STANDARD FEMALE MODELS

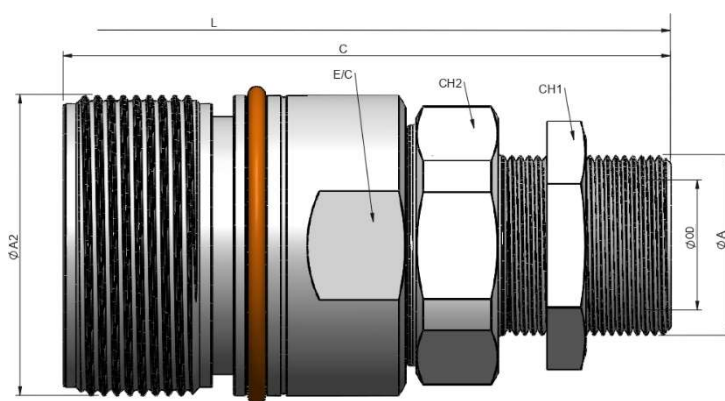
(S)	ØA	OD	REF.		CH1	CH2	CH3	C	ØA2	E	L
25	M26x1.5	18L	205.12115LI	300	30	41	41	112	Rd 48x3	33	185.5
	M30x2	22L	205.12115LJ		36			113		34	187.5
	M36x2	28L	205.12115LK		41			115		36	191.5
	M45x2	35L	205.12115LM		55			114		35	189.5
	M30x2	20S	205.12115MJ		36			117		38	195.5
	M36x2	25S	205.12115MK		41			119		40	199.5
	M42x2	30S	205.12115ML		50						
	M52x2	38S	205.12115MN		65						

## (S) 32 - 1 1/4"



STANDARD MALE MODELS

(S)	ØA	OD	REF.		CH1	CH2	CH3	C	ØD	E	L
32	M42x2	30S	205.11116ML	410	50	60	74	143	79	40	284



STANDARD FEMALE MODELS

(S)	ØA	OD	REF.		CH1	CH2	E/C	C	ØA2	E	L
32	M42x2	30S	205.12116ML	410	50	60	65	171	Rd 70x3	40	284



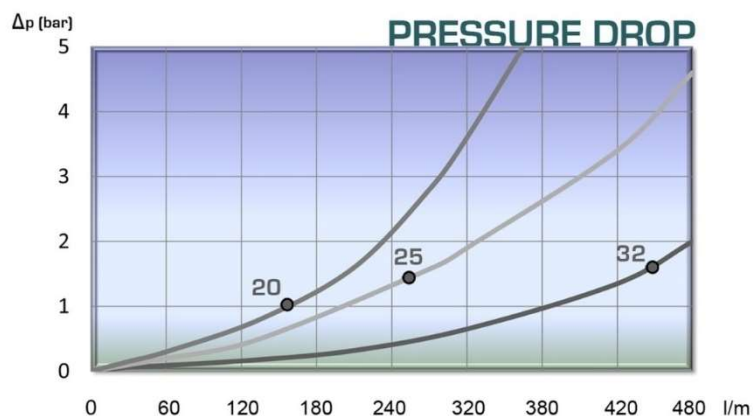
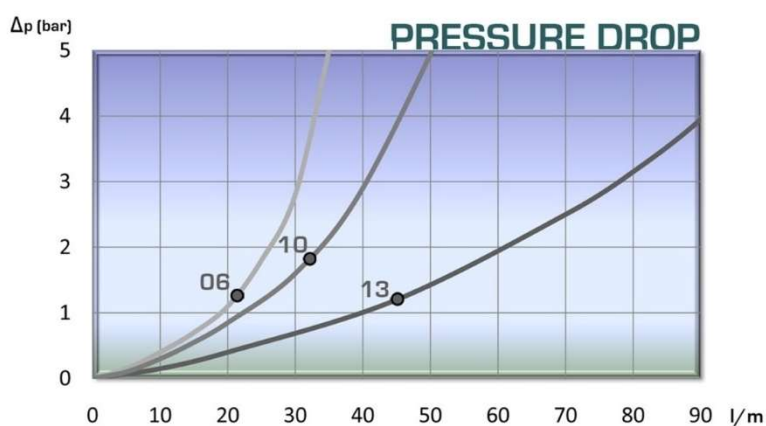
# 205 SERIES STG



## TECHNICAL DATA

(S)	Rated Flow	Min. Burst Pressure (bar)			Max. Working Pressure
	l/m	Male	Female	Connected	Bar
6	12	1400	1400	1800	450
10	32	1550	1450	1600	450
13	75	1200	1200	1400	400
20	145	1300	1200	1500	400
25	255	1200	1150	1200	300
32	440	1450	1250	1800	300

Test performed according to ISO 18869







# 205 SERIES STG

PLUGS  
& CAPS

INTEVA

Designed to protect the female (coupler) and male (nipple) parts while disconnected.

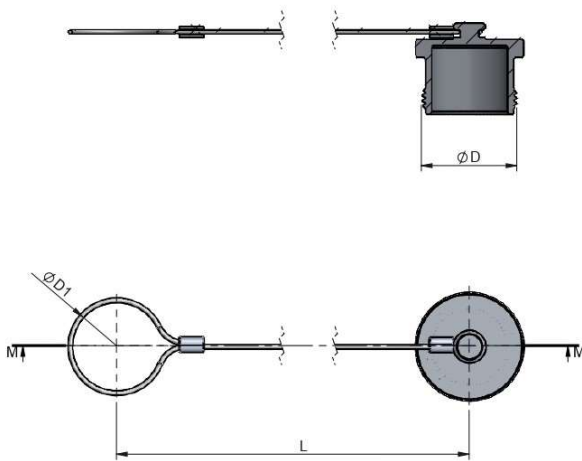
## MODEL REFERENCE / DIMENSIONS

Example:

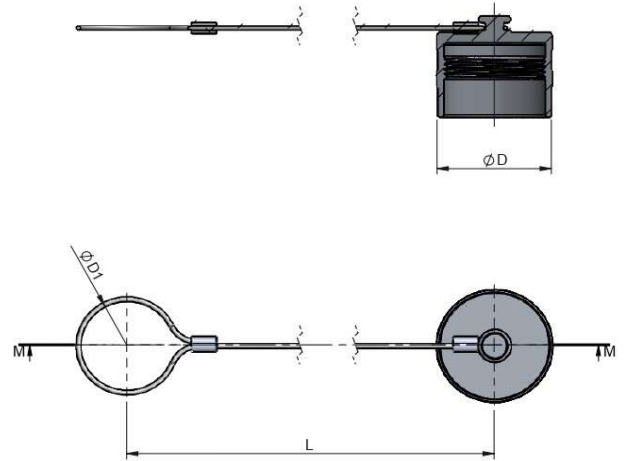
**205.5414 AA**

Series	Material	Part	Color	Size	Type
205.	2 SS316	3 Plug	0 Metal	1 6	AA
	5 Plastic	4 Cap	1 Rojo	2 10	
	6 Aluminum			3 13	
				4 20	
				5 25	
				6 32	

## (S) 6 – (S) 32 - SS316 & ALUMINUM



PLUG



CAP

(S)	SS316	ALUMINUM	ØD	ØD1	L
6	205.2301AA	205.6301AA	Rd 24x2	20	90
10	205.2302AA	205.6302AA	Rd 28x2	24	100
13	205.2303AA	205.6303AA	Rd 36x2	29.50	135
20	205.2304AA	205.6304AA	Rd 42x2	37	187
25	205.2305AA	205.6305AA	Rd 48x3	41	145
32	205.2306AA	205.6306AA	Rd 70x3	55	200

(S)	SS316	ALUMINUM	ØD	ØD1	L
6	205.2401AA	205.6401AA	Rd 24x2	20	90
10	205.2402AA	205.6402AA	Rd 28x2	24	100
13	205.2403AA	205.6403AA	Rd 36x2	29.50	135
20	205.2404AA	205.6404AA	Rd 42x2	37	187
25	205.2405AA	205.6405AA	Rd 48x3	41	145
32	205.2406AA	205.6406AA	Rd 70x3	55	200



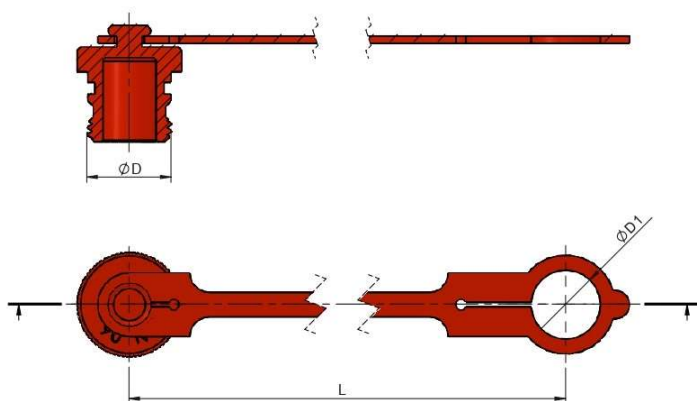


# 205 SERIES STG

PLUGS  
& CAPS

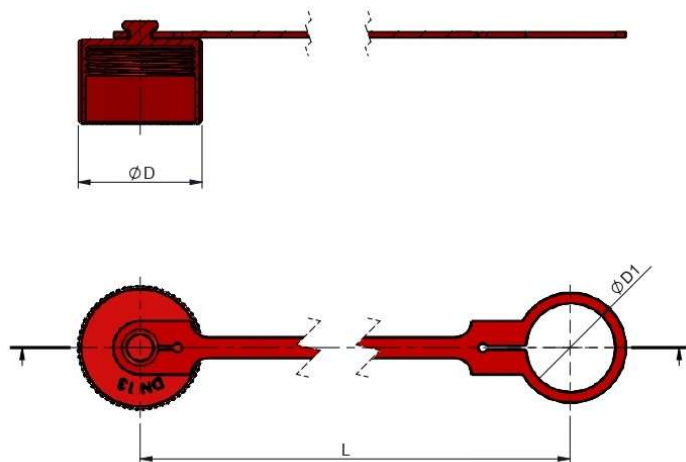
Designed to protect the female (coupler) and male (nipple) parts while disconnected.

## (S) 6 – (S) 32 - PLASTIC



**PLUG**

(S)	REF.	ØD	ØD1	L
6	205.5311AA	Rd 24x2	20	90
10	205.5312AA	Rd 28x2	24	100
13	205.5313AA	Rd 36x2	29.50	135
20	205.5314AA	Rd 42x2	37	187
25	205.5315AA	Rd 48x3	41	145
32	205.5316AA	Rd 70x3	55	200



**CUP**

(S)	REF.	ØD	ØD1	L
6	205.5411AA	Rd 24x2	20	90
10	205.5412AA	Rd 28x2	24	100
13	205.5413AA	Rd 36x2	29.50	135
20	205.5414AA	Rd 42x2	37	187
25	205.5415AA	Rd 48x3	41	145
32	205.5416AA	Rd 70x3	55	200



# 206 SERIES SRK



## TECHNICAL SPECIFICATIONS

### Features:

INTEVA's SRK couplings are used to connect hydraulic lines without air inclusion in the circuit and without loss of medium during disconnection. These couplings are possible to connect by hand up to around 20Bar residual pressure; when a tool is used, the coupling can also be connected / disconnected even when subjected to higher residual pressure.

Threaded connection eliminates brinellization.

### Working Pressure:

Up to 420 Bar

### Materials:

Body: Carbon Steel EN -10277-3  
Stainless Steel 316

O-rings: NBR / VITON / EPDM

Back-up-ring: PTFE

Springs: EN 10270-1/SH

Balls: -

### Available Threads:

DIN 2353 (ISO 8434-1)\*

### Closing System:

Flat Face

### Connection/Disconnection:

Screw on / off both parts

### Connection Under Pressure:

Residual pressure

**Available Size:** 3/8" a 1 1/4"

### Working Temperature (O-rings)

NBR	Viton	EPDM
+100°C	+200°C	+150°C
-30°C	-10°C	-40°C

**Sectors:** Industrial / Agricultural / Construction machinery



### Applications:

Designed for Hydraulic Oil (Group II-2014/68/EU)

### Interchange:

ARGUS SERIE Rh /  
VOSWINKEL SERIE RK

\* Others available upon request

## MODEL REFERENCE

Example:

**206.12115 AF**

Series	Material	Part	Closing	O-rings	Size (S)	Thread
206.	1 Carbon St.	1 Male	0 Without	0 Without	2 10	3/8"
	2 SS316	2 Female	1 Flat	1 NBR	3 13	1/2"
				2 VITON	4 20	3/4"
				3 EPDM	5 25	1"
					6 32	1 1/4"



**206-1**

INTEVA reserves the right to make modifications to its products without prior notice. Any external or internal alterations to our products will automatically void the warranty.

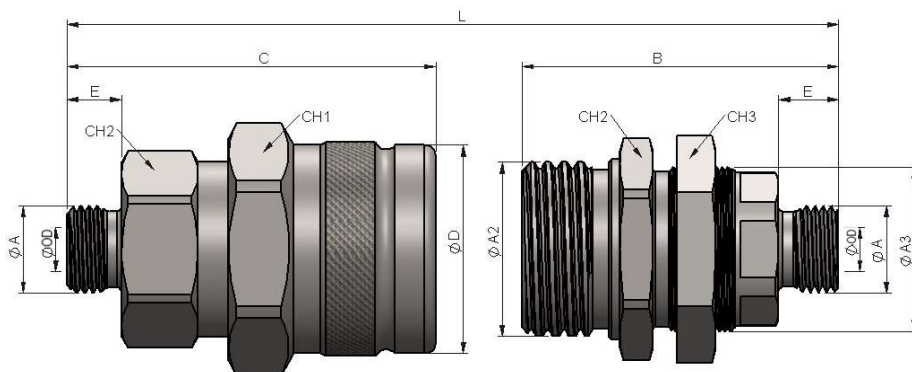


# 206 SERIES SRK

CARBON STEEL  
DIN 2353 (ISO 8434-1)



INTEVA

(S) 10 - 3/8"

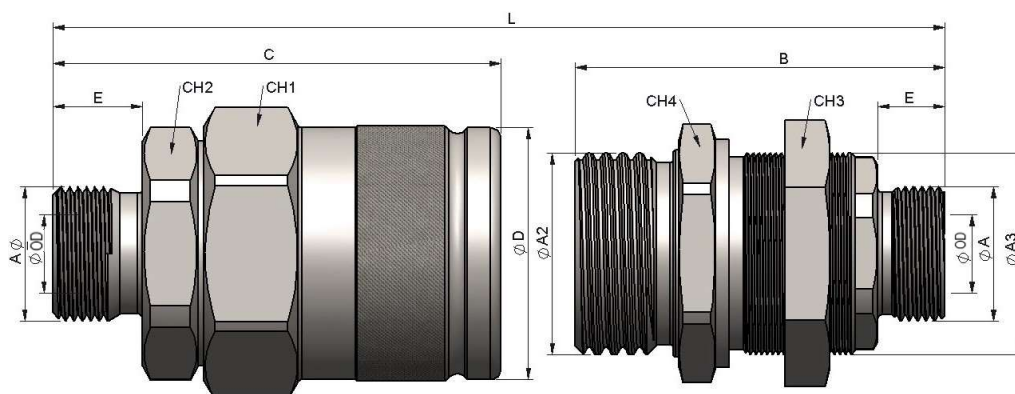


STANDARD MALE MODELS

STANDARD FEMALE MODELS



(S)	ØA	OD	E	L	REF.		CH1	CH2	C	ØD	REF.		ØA2	ØA3	CH2	CH3	B
10	M14x1.5	8L	10	111.5	206.11112JC	420	41	32	67.5	38	206.12112JC	420	Rd 32x3	M30x1	36	36	58
	M16x1.5	10L	11		206.11112JD												
	M18x1.5	12L	11		206.11112JE												
	M18x1.5	10S	12		206.11112KE												
	M20x1.5	12S	12		206.11112KF												
	M22x1.5	15L	12		206.11112JG												
	M22x1.5	14S	12		206.11112KG												
	M24x1.5	16S	14		206.11112KH												

(S) 13 - 1/2"



STANDARD MALE MODELS

STANDARD FEMALE MODELS

(S)	ØA	OD	E	L	REF.		CH1	CH2	C	ØD	REF.		ØA2	ØA3	CH2	CH3	B
13	M18x1.5	12L	11	127.5	206.11113JE	420	46	41	70.5	44.8	206.12113JE	420	Rd 36x3	M36x1	41	41	66
	M22x1.5	15L	12		206.11113JG												
	M22x1.5	14S	12		206.11113KG												
	M24x1.5	16S	14		206.12113KH												
	M26x1.5	18L	12		206.12113JI												
	M30x2.0	20S	16		206.11113KJ												

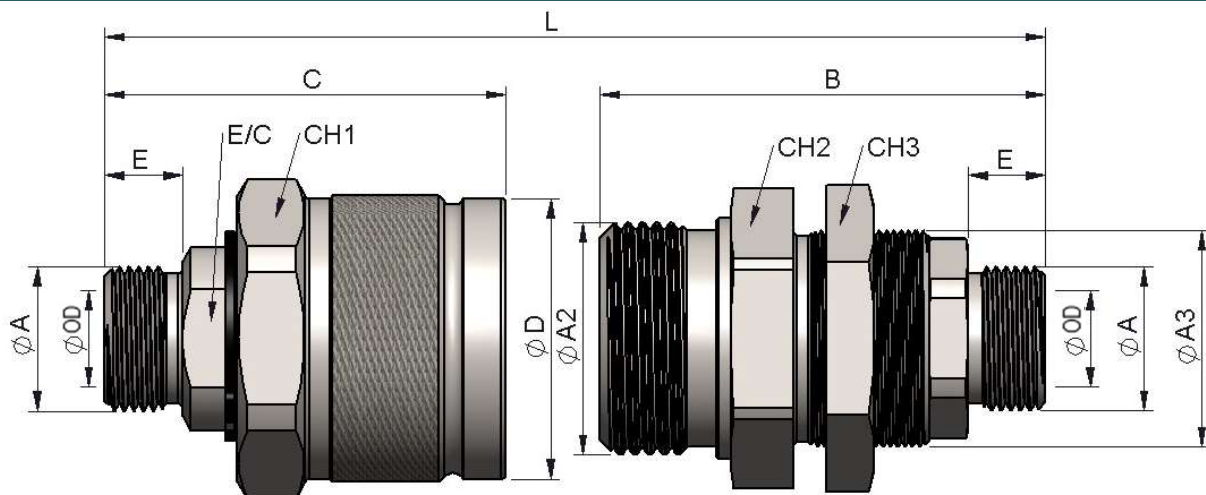


# 206 SERIES SRK

CARBON STEEL  
DIN 2353 (ISO 8434-1)

INTEVA

(S) 20 - 3/4"

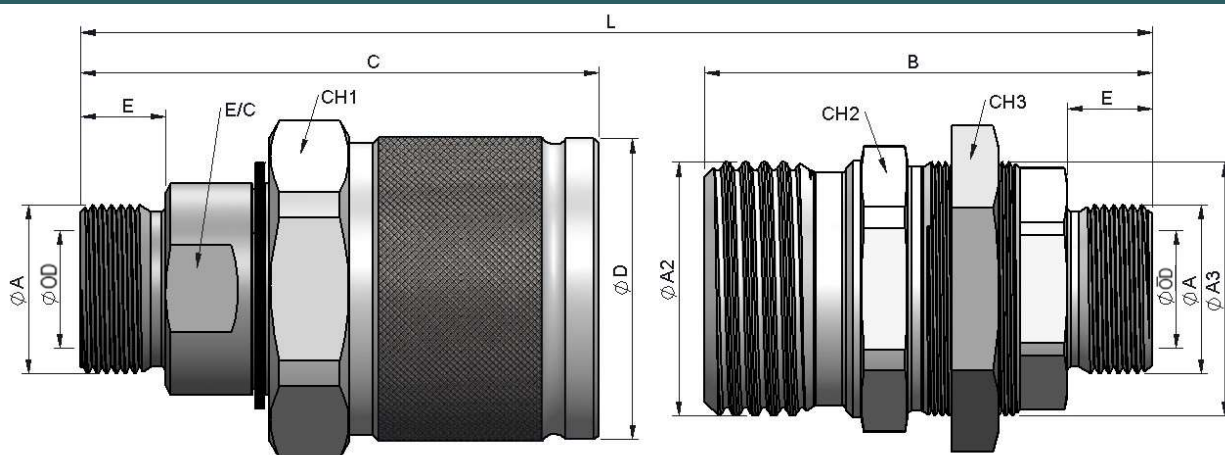


STANDARD MALE MODELS

STANDARD FEMALE MODELS

(S)	ØA	OD	E	L	REF.		CH1	E/C	C	ØD	REF.		ØA2	ØA3	CH2	CH3	B
20	M26x1.5	18L	12	140	206.11114JI	420	60	32	83	58	206.12114JI	420	Rd 48x3	M45x1.5	55	55	92
	M30x2.0	22L	14		206.11114JJ						206.12114JJ						
	M30x2.0	20S	16		206.11114KJ						206.12114KJ						
	M24x1.5	16S	14		206.11114KH						206.12114KH						
	M36x2.0	25S	18		206.11114KK						206.12114KK						

(S) 25 - 1"



STANDARD MALE MODELS

STANDARD FEMALE MODELS

(S)	ØA	OD	E	L	REF.		CH1	E/C	C	ØD	REF.		ØA2	ØA3	CH2	CH3	B
25	M30x2.0	22L	14	184	206.11115JJ	350	65	41	110	63.9	206.12115JJ	350	Rd 54x4	M54x1.5	55	60	95
	M30x2.0	20S	16		206.11115KJ						206.12115KJ						
	M36x2.0	28L	14		206.11115JK						206.12115JK						
	M36x2.0	25S	18		206.11115KK						206.12115KK						
	M42x2.0	30S	20		206.11115KL						206.12115KL						

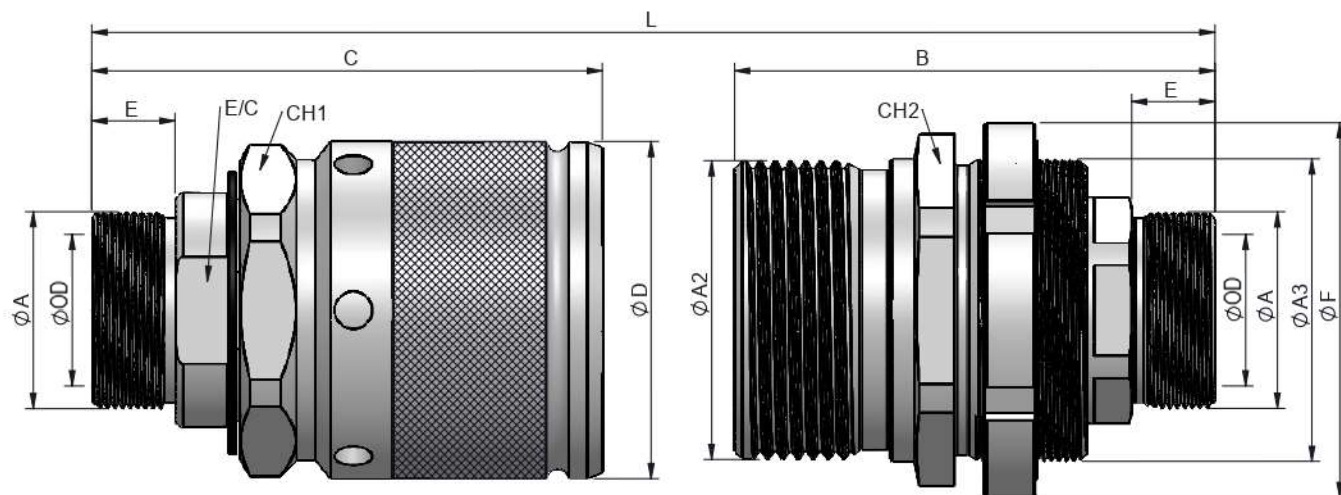


# 206 SERIES SRK

CARBON STEEL  
DIN 2353 (ISO 8434-1)



INTEVA

(S) 32 - 1 1/4"



## STANDARD MALE MODELS

## STANDARD FEMALE MODELS

(S)	ØA	OD	E	L	REF.		CH1	E/C	C	ØD	REF.		ØA2	ØA3	CH2	ØF	B
32	M45x2	35L	14	223	206.11116JM	420	80	55	135	89	206.12116JM	420	Rd 79x4	M80x2	85	100	127
	M52x2	38S	16		206.11116KN						206.12116KN						
	M52.2.0	42L	14		206.11116JN						206.12116JN						





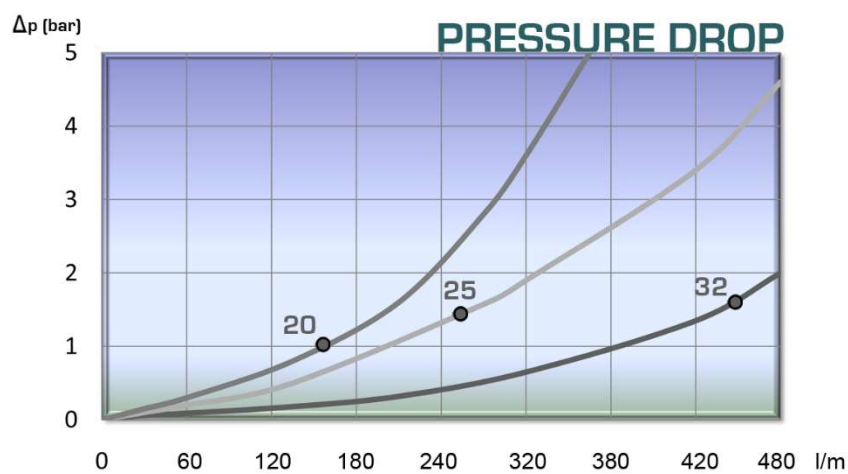
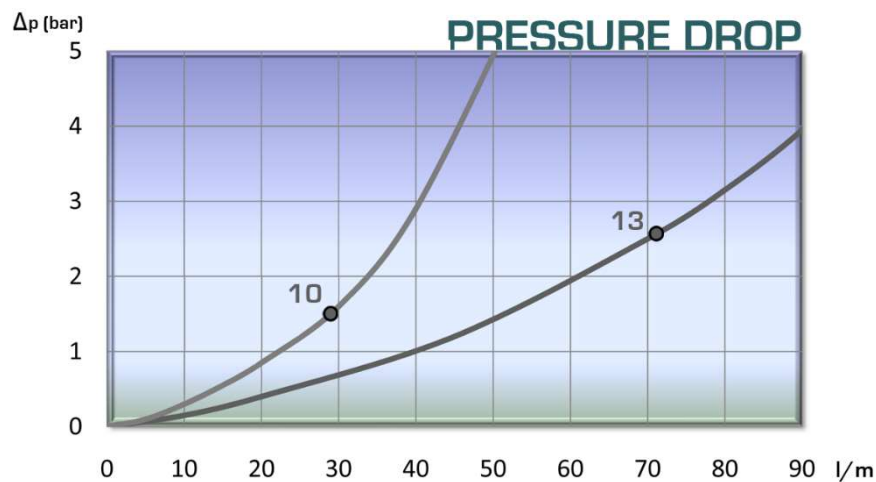
# 206 SERIES SRK

CARBON STEEL  
DIN 2353 (ISO 8434-1)

## TECHNICAL DATA

(S)	Rated Flow	Min. Burst Pressure (bar)			Max. Working Pressure
		Male	Female	Connected	
10	29 l/m	1500	1580	1600	420
13	72 l/m	1200	1150	1200	420
20	135 l/m	1250	1300	1280	420
25	250 l/m	1200	1150	1200	350
32	430 l/m	1550	1600	1680	420

Test performed according to ISO 18869





# 206 SERIES SRK

CAPS &  
PLUGS

INTEVA

Designed to protect the female (coupler) and male (nipple) parts while disconnected.

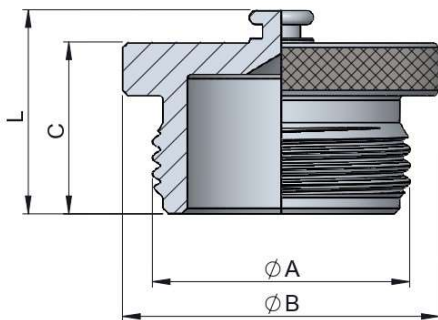
## MODEL REFERENCE

Example:

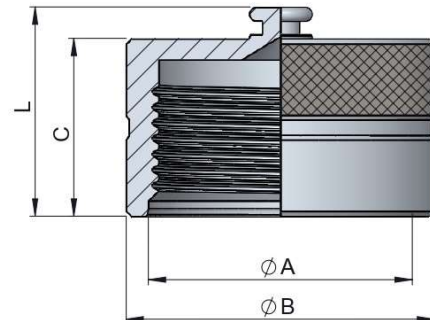
**206.6403 AA**

Series	Material	Part	Color	Size	Type
205.	6 Aluminum	3 Plug 4 Cap	0 Metal	2 10 3/8" 3 13 1/2" 4 20 3/4" 5 25 1" 6 32 1 1/4"	AA

## (S) 10 – (S) 32 - ALUMINUM



PLUG



CAP

(S)	REF.	ØA	ØB	C
10	206.6302AA	32x3	39	25
13	206.6303AA	36x3	44.5	25
20	206.6304AA	48x3	59	32
25	206.6305AA	54x4	64	39
32	206.6306AA	79x4	89.5	44

(S)	REF.	ØA	ØB	C
10	206.6402AA	32x3	39	26
13	206.6403AA	36x3	44.5	24
20	206.6404AA	48x3	59	34
25	206.6405AA	54x4	64	42
32	206.6406AA	79x4	89.5	74



# 207 SERIES CAT



## TECHNICAL SPECIFICATIONS

<b>Features:</b>	Used for high-pressure and heavy work.	
<b>Working Pressure:</b>	Up to 420 Bar	
<b>Materials:</b>	Body:	Carbon Steel EN -10277-3 Stainless Steel 316
	O-rings:	NBR / VITON / EPDM
	Back-up-ring:	PTFE
	Springs:	EN-10270-1/SH
	Balls:	-
<b>Available Threads:</b>	BSP / ISO 9974 (DIN 3852-1 B)*	
<b>Closing System:</b>	Poppet Valve	
<b>Connection/Disconnection:</b>	Screw on / off both parts	
<b>Connection Under Pressure:</b>	Residual Pressure	

**Available Size:** 1/2" y 1"

### Working Temperature (O-rings)

	NBR	Viton	EPDM
	+100°C	+200°C	+150°C
	-30°C	-10°C	-40°C

**Sectors:** Industrial / Agricultural / Construction machinery



**Applications:** Designed for Hydraulic Oil (Group II- 2014/68/EU)

**Interchange:** DNP VAV

\* Others available upon request

## MODEL REFERENCE

**Example:**

# 207.12113 NG

Series	Material	Part	Closing	O-rings	Size (S)	Thread
207.	1 Carbon St.	1 Male	0 Without	0 Without	3 13	1/2"
	2 SS316	2 Female	1 Poppet	1 NBR	5 25	1"
				2 VITON		
				3 EPDM		

2 letters (see Thread Table on page 999-1)

## 207-1

INTEVA reserves the right to make modifications to its products without prior notice. Any external or internal alterations to our products will automatically void the warranty.

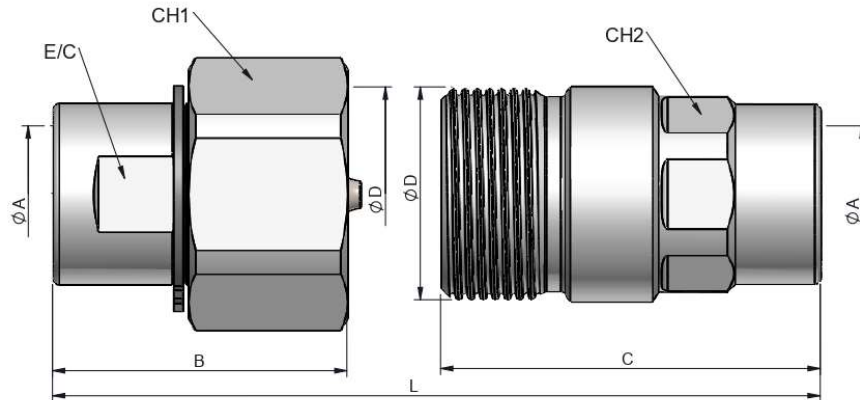




# 207 SERIES CAT



(S) 13 - 1/2"



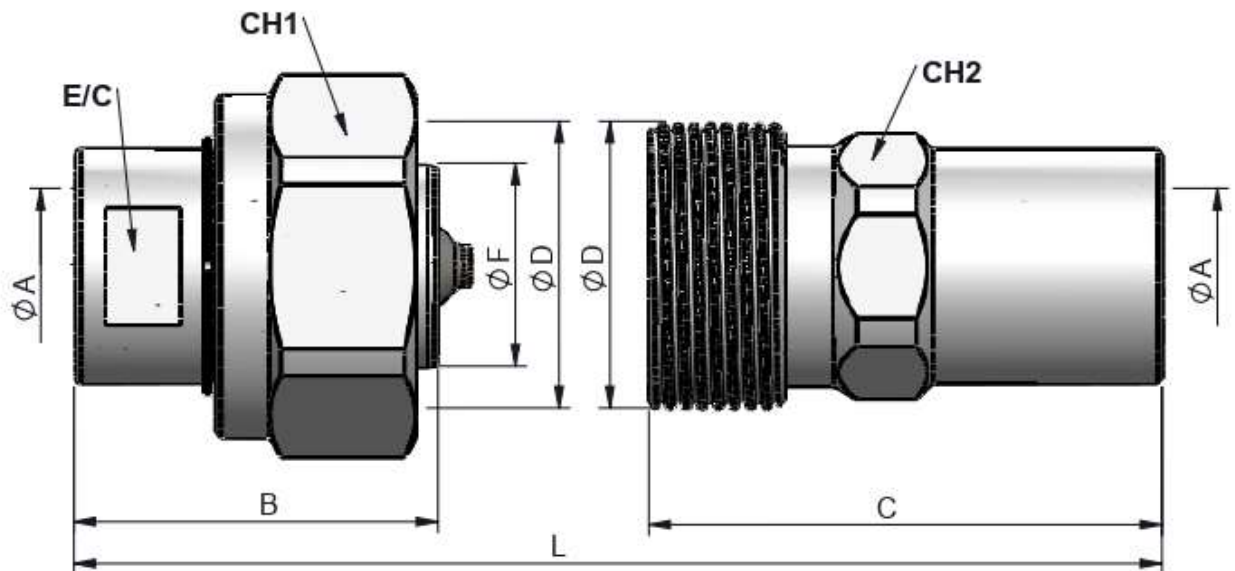
STANDARD MALE MODELS

(S)	ØA	REF.		CH1	E/C	ØD	B	L
13	M22x1.5	207.11113NG	400	41	27	Rd 35x2	48	92
	1/2" BSP	207.11113AD						

STANDARD FEMALE MODELS

(S)	ØA	REF.		CH2	C	ØD	L
13	M22x1.5	207.12113NG	400	30	62	Rd 35x2	92
	1/2" BSP	207.12113AD					

(S) 25 - 1"



STANDARD MALE MODELS

(S)	ØA	REF.		CH1	E/C	ØF	ØD	B	L
25	M30x1.5	207.11115NS	360	65	38	38	Rd 54x3	68	134
	1" BSP	207.11115AF							

STANDARD FEMALE MODELS

(S)	ØA	REF.		CH2	C	ØD	L
25	M30x1.5	207.12115NS	360	46	96	Rd 54x3	134
	1" BSP	207.12115AF					



# 207 SERIES

## CAT

CAPS &  
PLUGS



Designed to protect the female (coupler) and male (nipple) parts while disconnected.

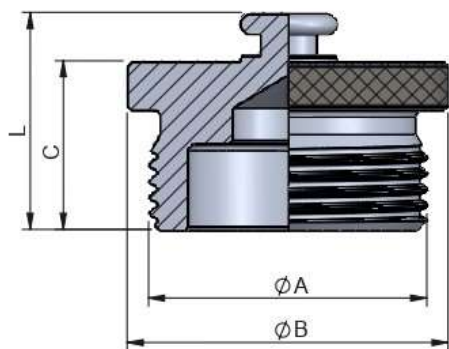
### MODEL REFERENCE

Example:

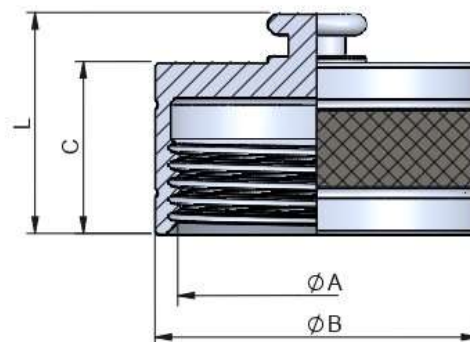
**207.6403 AA**

Series	Material	Part	Color	Size (S)	Type
206.	6 Aluminum	3 Plug 4 Cap	0 Metal	3 13 1/2" 5 25 1"	AA

### (S) 13 – (S) 25 - ALUMINUM



PLUG



CAP

(S)	REF.	ØA	ØB	C	L
13	207.6303AA	Rd 35x2	40	21	27
25	207.6305AA	Rd 54x3	60	37.5	43.5

(S)	REF.	ØA	ØB	C	L
13	207.6403AA	Rd 35x2	40	21	27
25	207.6405AA	Rd 54x3	60	29	35





# 231 SERIES VPR

FLAT FACE  
SCREW COUPLINGS

## TECHNICAL SPECIFICATIONS

### Features:

Thanks to its design connection/disconnection under residual pressure can be done. High resistance to pressure impulses. Minimal fluid spillage to environment when disconnected. Minimal drop pressure.

### Working Pressure:

Up to 600 Bar

### Materials:

Body: Carbon Steel EN -10277-3  
Stainless Steel 316

O-rings: NBR / VITON / EPDM

Back-up-ring: PTFE

Springs: EN 10270-1/SH

Balls: AISI 1010/1015

### Available Threads:

BSP / NPTF / ISO 11926 (J1926)  
DIN 2353 (ISO 8434-1) \*

### Closing System:

Flat Face / C.U.R.P.\*\*

### Connection/Disconnection:

Screw on / off both parts

### Connection Under Pressure:

Not Allowed / Only in C.U.R.P. model

**Available Size:** 1/4" to 1 1/2"

### Working Temperature (O-rings)

NBR	Viton	EPDM
+100°C	+200°C	+150°C
-30°C	-10°C	-40°C

**Sectors: Industrial / Construction machinery**



### Applications:

Designed for Hydraulic Oil (Group II-2014/68/EU).

### Interchange:

Stucchi VEP

*\*Others on request and minimum quantity*

## MODEL REFERENCE

**Example:**

**231.11313 AD**

Series	Material	Part	Closing	O-rings	Size (S)	Thread
231.	1 Carbon St. 2 SS316	1 Male 2 Female	1 Flat 3 C.U.R.P	1 NBR 2 VITON 3 EPDM	1 6.3 2 10 3 12.5 4 16 5 19 6 25 7 30	1 1/4" 3/8" 1/2" 3/4" 1" 1 1/4" 1 1/2"

2 letters (see  
Thread Table on  
page 999-1)

\*\*The C.U.R.P. it is only available in the male part

**231-1**

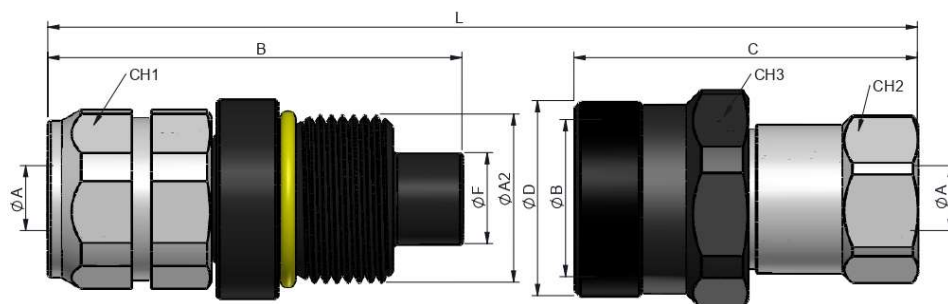
INTEVA reserves the right to make modifications to its products without prior notice. Any external or internal alterations to our products will automatically void the warranty.



# 231 SERIES VPR

CARBON STEEL  
FEMALE THREAD  
BSP / NPTF / ISO 11926 (SAE J1926)

(S) 6.3 - 1/4"



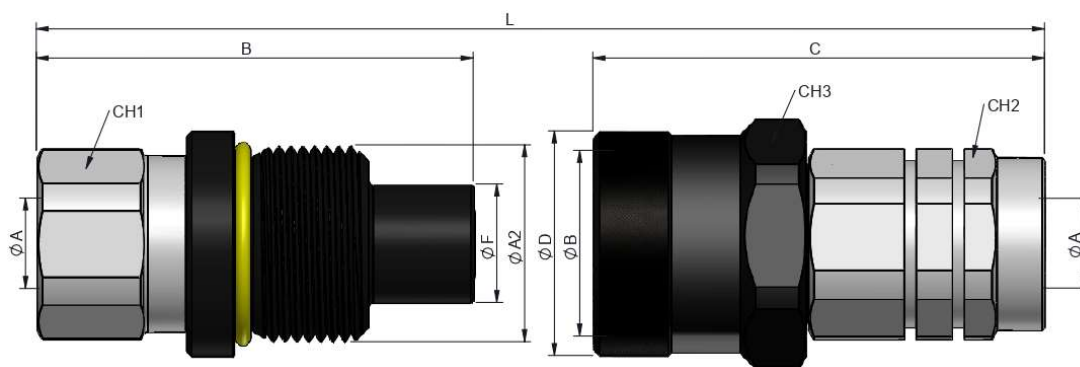
STANDARD MALE MODELS

(S)	ØA	REF.		CH1	B	ØA2	ØF	L
6.3	1/4" BSP	231.11311AB		22	74	M30x2	16.20	123
	1/4" NPTF	231.11311BB						

STANDARD FEMALE MODELS

(S)	ØA	FEMALE		C	CH2	CH3	ØB	ØD	L
6	1/4" BSP	231.12111AB		82	27	36	M30x2	34.8	123
	1/4" NPTF	231.12111BB							

(S) 10 - 3/8"



STANDARD MALE MODELS

(S)	ØA	REF.		CH1	B	ØA2	ØF	L
10	3/8" BSP	231.11312AC		30	73	M33x2	19.80	131
	3/8" NPTF	231.11312BC						
	1/2" BSP	231.11312AD						
	1/2" NPTF	231.11312BD						
	3/4"-16h UNF	231.11312GF						
	7/8"-14h UNF	231.11312GH						

STANDARD FEMALE MODELS

(S)	ØA	REF.		C	CH2	CH3	ØB	ØD	L
10	3/8" BSP	231.12112AC		98	30	38	M33x2	37.5	131
	3/8" NPTF	231.12112BC							
	1/2" BSP	231.12112AD							
	1/2" NPTF	231.12112BD							
	3/4"-16h UNF	231.12112GF							
	7/8"-14h UNF	231.12112GH							

L = Total length when Male and Female are connected.

231-2

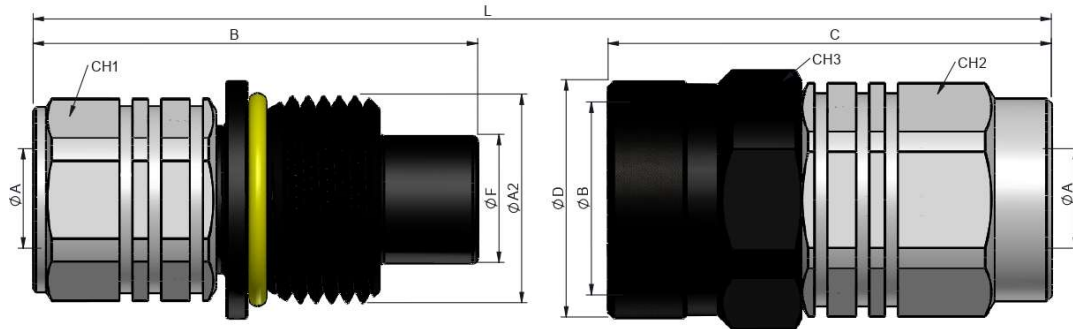
INTEVA reserves the right to make modifications to its products without prior notice. Any external or internal alterations to our products will automatically void the warranty.



# 231 SERIES VPR

CARBON STEEL  
FEMALE THREAD  
BSP / NPTF / ISO 11926 (SAE J1926)

(S) 12.5 - 1/2"



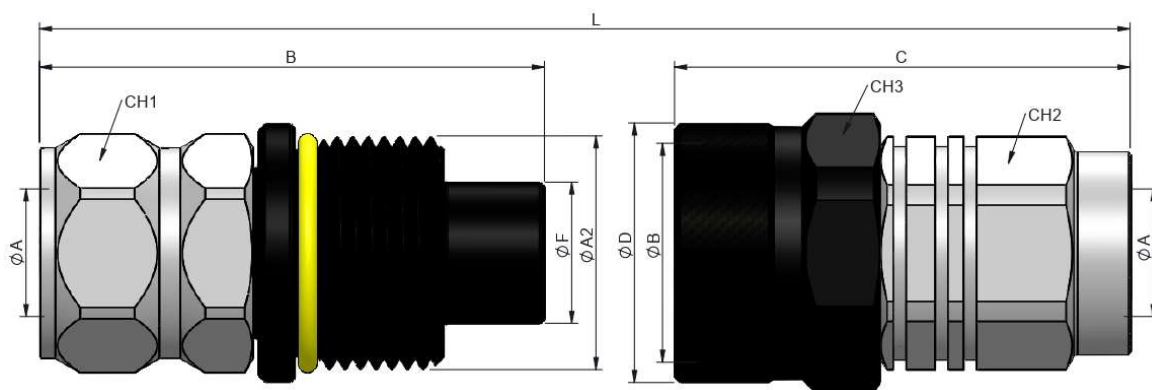
STANDARD MALE MODELS

(S)	ØA	REF.		CH1	B	ØA2	ØF	L
12.5	1/2" BSP	231.11313AD	550	36	85.20	M40x3	24.50	125
	1/2" NPTF	231.11313BD						
	3/4" BSP	231.11313AE						
	3/4" NPTF	231.11313BE						
	7/8" - 14h UNF	231.11313GH						
	1 1/16" - 12h UN	231.11313GK						

STANDARD FEMALE MODELS

(S)	ØA	REF.		C	CH2	CH3	ØB	ØD	L
13	1/2" BSP	231.12113AD	550	85	41	46	M40x3	45.5	125
	1/2" NPTF	231.12113BD							
	3/4" BSP	231.12113AE							
	3/4" NPTF	231.12113BE							
	7/8" - 14h UNF	231.12113GH							
	1 1/16" - 12h UN	231.12113GK							

(S) 16 - 3/4"



STANDARD MALE MODELS

(S)	ØA	REF.		CH1	B	ØA2	ØF	L
16	3/4" BSP	231.11314AE	500	41	97	M45x3	27	126.5
	3/4" NPTF	231.11314BE						
	1 1/16" - 12h UN	231.11314GK						

STANDARD FEMALE MODELS

(S)	ØA	REF.		C	CH2	CH3	ØB	ØD	L
16	3/4" BSP	231.12114AE	500	87.5	41	50	M45x3	50	126.5
	3/4" NPTF	231.12114BE							
	1 1/16" - 12h UN	231.12114GK							

L = Total length when Male and Female are connected.

231-3

INTEVA reserves the right to make modifications to its products without prior notice. Any external or internal alterations to our products will automatically void the warranty.

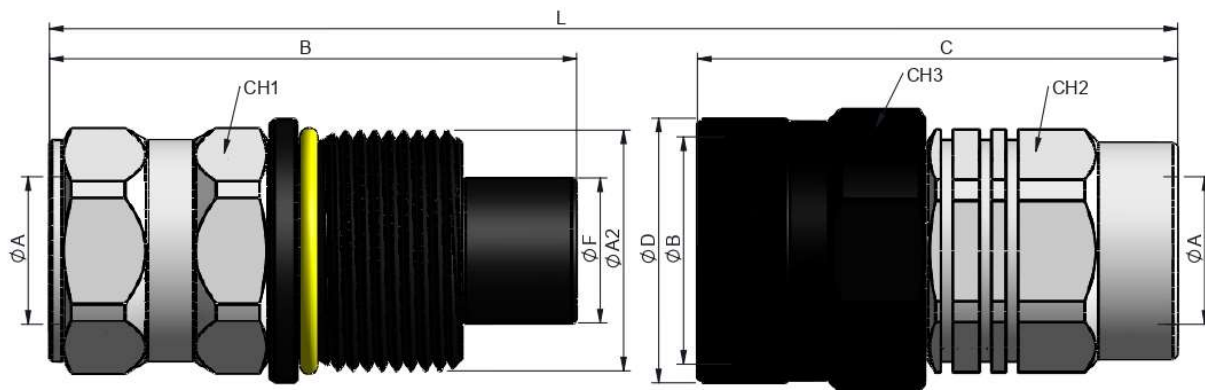




# 231 SERIES VPR

CARBON STEEL  
FEMALE THREAD  
BSP / NPTF / ISO 11926 (SAE J1926)

(S) 19 – 1"



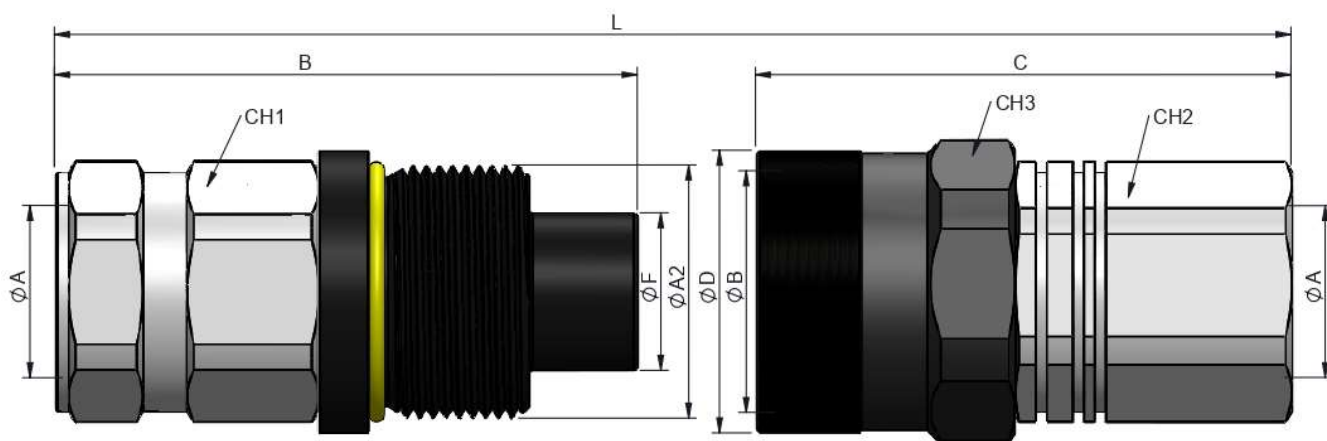
STANDARD MALE MODELS

(S)	ØA	REF.		CH1	B	ØA2	ØF	L
19	1" BSP	231.11315AF	500	41	109	M50x3	30.00	184
	1" NPTF	231.11315BF						
	1 5/16 – 12h UN	231.11315GO						

STANDARD FEMALE MODELS

(S)	ØA	REF.		C	CH2	CH3	ØB	ØD	L
19	1" BSP	231.12115AF	500	132.5	46	55	M50x3	54.5	184
	1" NPTF	231.12115BF							
	1 5/16 – 12h UN	231.12115GO							

(S) 25 – 1 1/4"



STANDARD MALE MODELS

(S)	ØA	REF.		CH1	B	ØA2	ØF	L
25	1 1/4" BSP	231.11316AG	470	55	133	M58x3	36.00	230
	1 1/4" NPTF	231.11316BG						

STANDARD FEMALE MODELS

(S)	ØA	REF.		C	CH2	CH3	ØB	ØD	L
25	1 1/4" BSP	231.12116AG	470	158	55	65	M58x3	64.5	230
	1 1/4" NPTF	231.12116BG							

L = Total length when Male and Female are connected.

231-4

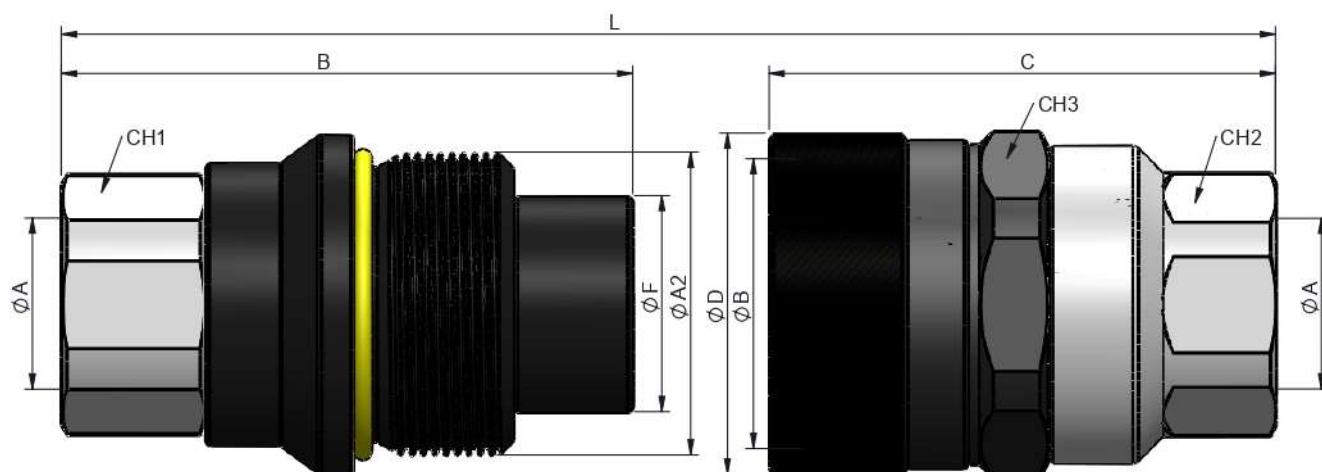
INTEVA reserves the right to make modifications to its products without prior notice. Any external or internal alterations to our products will automatically void the warranty.



# 231 SERIES VPR

CARBON STEEL  
FEMALE THREAD  
BSP / NPTF / ISO 11926 (SAE J1926)

(S) 30 – 1 1/2"



STANDARD MALE MODELS

(S)	ØA	REF.		CH1	B	ØA2	ØF	L
30	1 1/2" BSP	231.11317AH		65	151	M80x4	57.00	255
	1 1/2" NPTF	231.11317BH						

STANDARD FEMALE MODELS

(S)	ØA	REF.		C	CH2	CH3	ØB	ØD	L
30	1 1/2" BSP	231.12117AH		178	65	85	M80x4	90	255
	1 1/2" NPTF	231.12117BH							

L = Total length when Male and Female are connected.

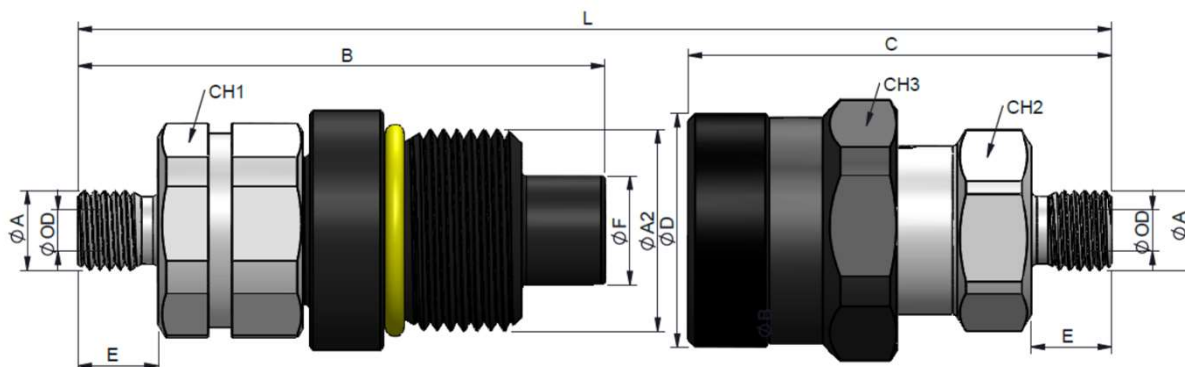




# 231 SERIES VPR

CARBON STEEL  
MALE THREAD  
ISO 8434-1 (DIN 2353)

(S) 6.3 – 1/4"

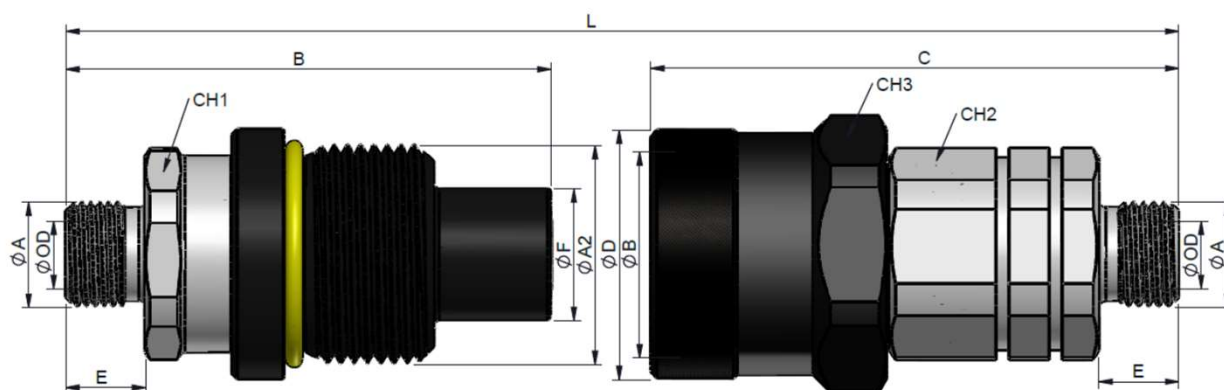


STANDARD MALE MODELS

STANDARD FEMALE MODELS

(S)	ØA	OD		L	REF.	CH1	ØA2	B	ØF	E	REF.	ØB	CH2	CH3	C	ØD	E
6.3	M12x1.5	6L	600	129	231.11311JB	30	M30x2	78.5	16.2	12	231.12111JB	M30x2	27	36	83.5	34.8	12
	M14x1.5	8L		129	231.11311JC					11	231.12111JC						11

(S) 10 – 3/8"



STANDARD MALE MODELS

STANDARD FEMALE MODELS

(S)	ØA	OD		L	REF.	CH1	ØA2	B	ØF	E	REF.	CH2	CH3	ØB	C	ØD	E
10	3/8" BSP	*	550	135	231.11312AN	30	M33x2	73	19.8	12	231.12112AN	30	38	M33x2	102	33	12
	M14x1.5	8L			231.11312JC					11	231.12112JC						11
	M16x1.5	10L			231.11312JD					12	231.12112JD						12
	M16x1.5	8S			231.11312KD						231.12112KD						
	M18x1.5	10S			231.11312KE						231.12112KE						
	M20x1.5	12S			231.11312KF						231.12112KF						

L = Total length when Male and Female are connected.

231-6

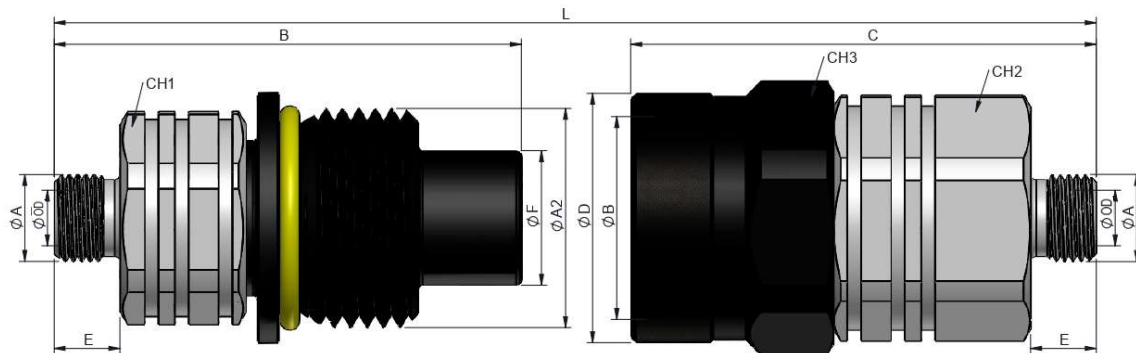
INTEVA reserves the right to make modifications to its products without prior notice. Any external or internal alterations to our products will automatically void the warranty.



# 231 SERIES VPR

CARBON STEEL  
MALE THREAD  
ISO 8434-1 (DIN 2353)

(S) 12.5 – 1/2"

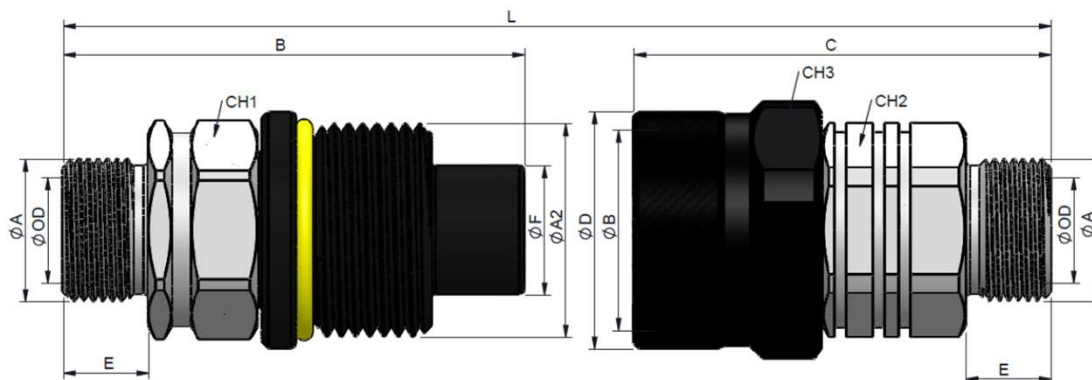


STANDARD MALE MODELS

STANDARD FEMALE MODELS

(S)	ØA	OD		L	REF.	CH1	ØA2	B	ØF	E	REF.	CH2	CH3	ØB	C	ØD	E
13	M14x1.5	8L	550	126	231.11313JC	36	M40x3	85	24.6	11	231.12113JC	41	46	M40x3	85	45.5	11
	M16x1.5	10L			231.11313JD					12	231.12113JD						12
	M18x1.5	12L			231.11313JE						231.12113JE						
	M22x1.5	15L			231.11313JG						231.12113JG						
	M26x1.5	18L			231.11313JI						231.12113JI						
	M18x1.5	10S			231.11313KE						231.12113KE						
	M20x1.5	12S			231.11313KF						231.12113KF						
	M22x1.5	14S			231.11313KG						231.12113KG						
	M24x1.5	16S			231.11313KH						231.12113KH						

(S) 16 – 5/8"



STANDARD MALE MODELS

STANDARD FEMALE MODELS

(S)	ØA	OD		L	REF.	CH1	ØA2	B	ØF	E	REF.	CH2	CH3	ØB	C	ØD	E
16	M18x1.5	12I	550	165	231.11314JE	41	M45x3	97	27	12	231.12114JE	41	50	M45x3	116	42	12
	M22x1.5	15L			231.11314JG						231.12114JG						
	M26x1.5	18L			231.11314JI						231.12114JI						
	M30x2	22L			231.11314JJ					18	231.12114JJ						18
	M22x1.5	14S			231.11314KG					12	231.12114KG						12
	M24x1.5	16S			231.11314KH						231.12114KH						
	M30x2	20S			231.11314KJ					18	231.12114KJ						18

L = Total length when Male and Female are connected.

231-7

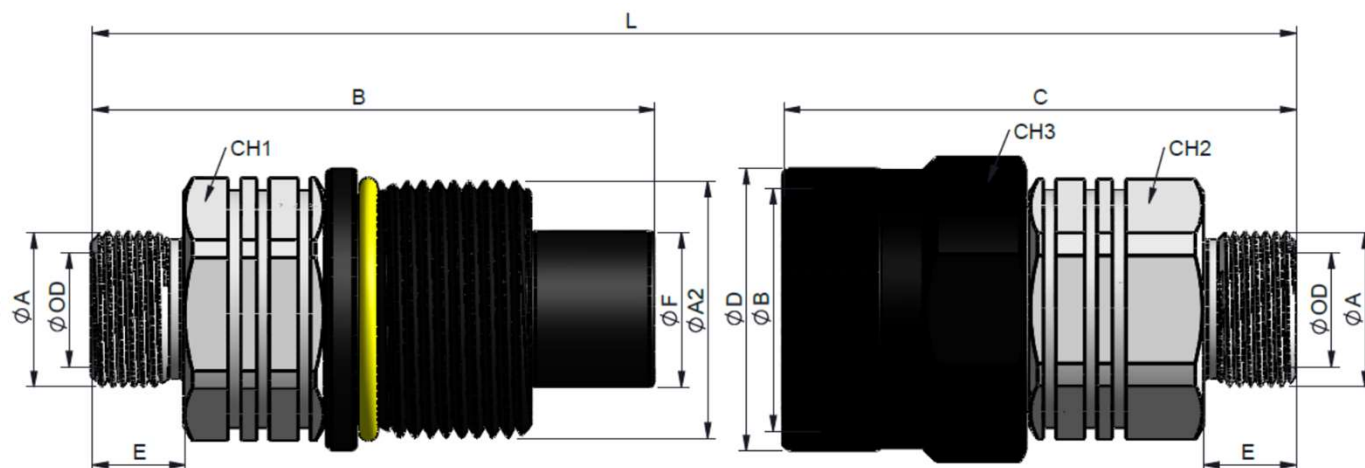
INTEVA reserves the right to make modifications to its products without prior notice. Any external or internal alterations to our products will automatically void the warranty.



# 231 SERIES VPR


CARBON STEEL  
MALE THREAD  
ISO 8434-1 (DIN 2353)

(S) 19 – 1"



STANDARD MALE MODELS

STANDARD FEMALE MODELS

(S)	ØA	OD		L	REF.	CH1	ØA2	B	ØF	E	REF.	CH2	CH3	ØB	C	ØD	E
19	M26x1.5	18L		184	231.11315JI	46	M50x3	109	30	12	231.12115JI	46	55	M50x3	132.5	54.8	12
	M30x2	22L			231.11315JJ					18	231.12115JJ						18
	M36x2	28L			231.11315JK					16	231.12115JK						16
	M45x2	35L			231.11315JM						231.12115JM						
	M30x2	20S			231.11315KJ					18	231.12115KJ						18
	M36x2	25S			231.11315KK						231.12115KK						
	M42x2	30S			231.11315KL					20	231.12115KL						20
	M52x2	38S		177	231.11315KN	55		105.5			231.12115KN	55			129		

L = Total length when Male and Female are connected.



# SERIE 231

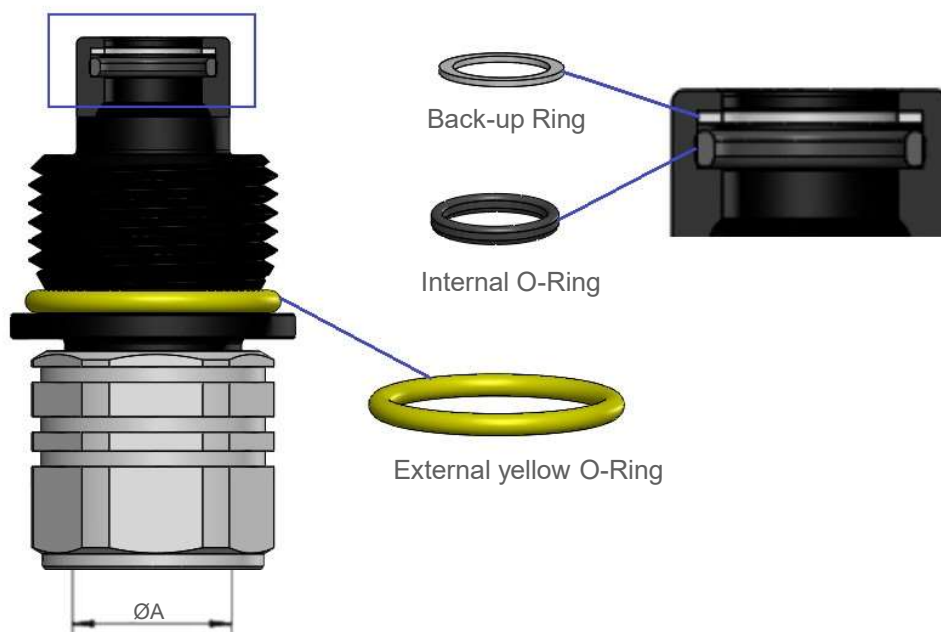
## VPR SEAL KIT MALE COUPLING

### TECHNICAL DATA

**Features:** Our seal kit includes an internal o-ring, external yellow o-ring and a back-up ring.  
Each seal kit bag includes 5 seals kits.

**Available size:** 1/4" a 1 1/2"

**Materials:** Internal O-Ring: NBR 90 Shores  
External O-Ring: NBR 70 Shores ( yellow )  
Back-up Ring: PTFE



STANDARD MALE KIT

(S)	ØA	REF.
6.3	1/4" BSP	231.SK111
	1/4" NPTF	
10	3/8" BSP	231.SK112
	3/8" NPTF	
12.5	1/2" BSP	231.SK113
	1/2" NPTF	
16	3/4" BSP	231.SK114
	3/4" NPTF	

STANDARD MALE KIT

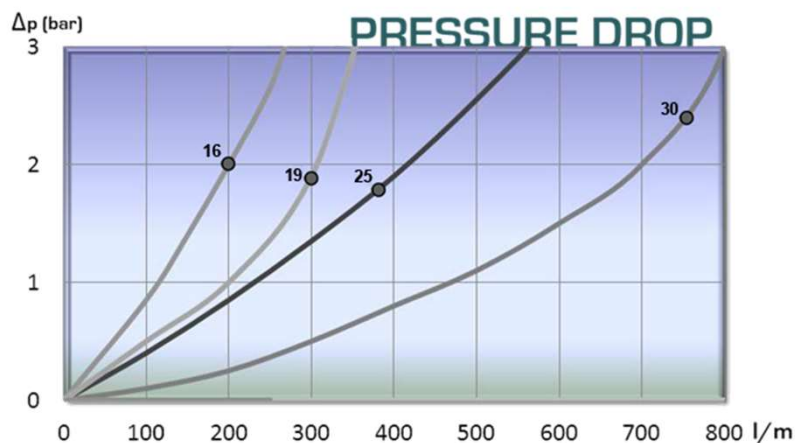
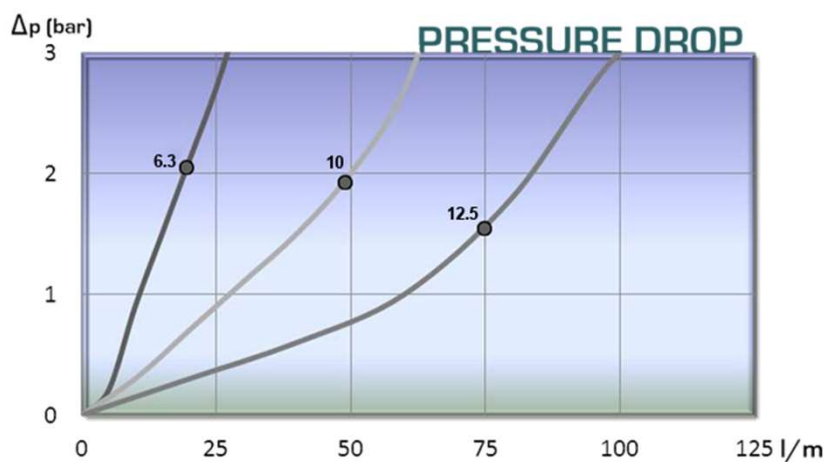
(S)	ØA	REF.
19	1 " BSP	231.SK115
	1 " NPTF	
25	1 1/4" BSP	231.SK116
	1 1/4" NPTF	
30	1 1/2" BSP	231.SK117
	1 1/2" NPTF	

# 231 SERIES VPR

## TECHNICAL DATA

(S)	Rated Flow	Min. Burst Pressure (bar)			Max. Working Pressure			Spillage
		Male	Female	Connected	Male	Female	Connected	
6	25 l/m	1500	1260	1500	600	420	600	0.012
10	45 l/m	1400	1000	1400	550	330	550	0.040
13	90 l/m	1400	1000	1400	550	330	550	0.025
16	150 l/m	1400	1000	1400	550	330	550	0.033
20	200 l/m	1250	1000	1250	500	330	500	0.018
25	350 l/m	1200	800	1200	470	300	470	0.060
30	750 l/m	1100	800	1100	400	270	400	0.200

Test performed according to ISO 18869



231-10

INTEVA reserves the right to make modifications to its products without prior notice. Any external or internal alterations to our products will automatically void the warranty.







# 231 SERIES

## VPR

CAPS & PLUGS



Designed to protect the female (coupler) and male (nipple) parts while disconnected.

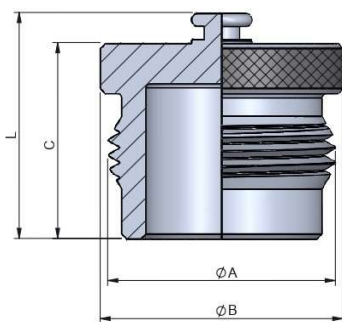
### MODEL REFERENCE / DIMENSIONS

Example:

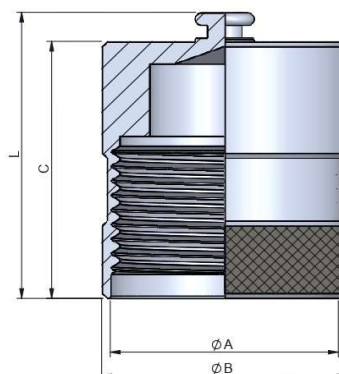
**231.6301AA**

Series	Material	Part	Color	Size (S)	Type
231.	6 Aluminum	3 Plug 4 Cap	0 Metal	1 6.3 1/4" 2 10 3/8" 3 12.5 1/2" 4 16 3/4" 5 19 1" 6 25 1 1/4" 7 30 1 1/2"	AA

### (T) 6 – (T) 30 - ALUMINUM



PLUG (FEMALE)



CAP (MALE)

(T)	REF.	ØA	ØB	C	L
6	231.6301AA	M30x2	35	30	36
10	231.6302AA	M33x2	38	32	38
13	231.6303AA	M40x3	46	35	41
16	231.6304AA	M45x3	50	39	45
20	231.6305AA	M50x3	55	50	56
25	231.6306AA	M58x3	65	55	61
30	231.6307AA	M80x4	90	65	71

(T)	REF.	ØA	ØB	C	L
6	231.6401AA	M30x2	35	45	61
10	231.6402AA	M33x2	38	50	56
13	231.6403AA	M40x3	46	52	58
16	231.6404AA	M45x3	50	55	61
20	231.6405AA	M50x3	55	65	71
25	231.6406AA	M58x3	65	65	71
30	231.6407AA	M80x4	90	80	86



# 122 SERIES AGR



## TECHNICAL SPECIFICATIONS

<b>Features:</b>	Designed to connect the hydraulic system between tractor and trailer or implement. Special option: male with plastic stopper included if you add to base code 010 (quantity min 250 a)	
<b>Working Pressure:</b>	Up to 250 Bar	<b>Available Size:</b> 1/2"
<b>Materials:</b>	Body:	Carbon Steel EN -10277-3
	O-rings:	NBR / VITON / EPDM
	Back-up-ring:	PTFE
	Springs:	EN 10270-1/SH
	Balls:	AISI 1010/1015
<b>Available Threads:</b>	BSP / DIN 2353 (ISO 8434 -1) ISO 9974-3 / Special *	
<b>Closing System:</b>	Poppet Valve	
<b>Connection/Disconnection:</b>	Screw on / off both parts	
<b>Connection Under Pressure:</b>	Not allowed	

### Working Temperature (O-rings)

	NBR	Viton	EPDM
	+100°C	+200°C	+150°C
	-30°C	-10°C	-40°C

**Sectors:** Agricola



**Applications:** Designed for Hydraulic Oil (Group II-2014/68/EU).

**Interchange:** GROMELLE K-8000

*\*Others on request and minimum quantity*

## MODEL REFERENCE

**Example:**

# 122.11113NE

Series	Material	Part	Closing	O-rings	Size (S)	Thread
122.	1 Carbon St.	1 Male 2 Female	1 Poppet	1 NBR 2 VITON 3 EPDM	3 13 : 1/2"	2 letters (see Thread Table on page 999-1)

# 122-1

INTEVA reserves the right to make modifications to its products without prior notice. Any external or internal alterations to our products will automatically void the warranty.

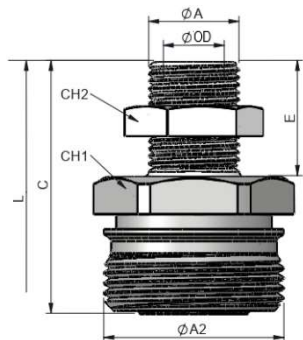




# SERIE 122 AGR

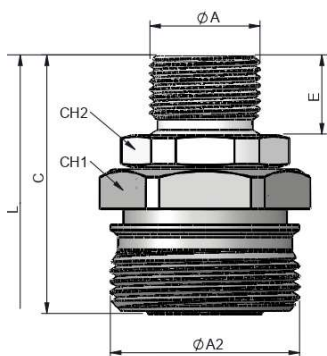


## (S) 13 - 1/2" – MALE – BULKHEAD MALE THREAD DIN 2353 (ISO 8434-1)



(S)	ØA	OD	REF.		CH1	CH2	C	ØA2	E	L
13	M18x1.5	12L	122.11113JE	250	36	24	50.50	36	23	*
	M20x1.5	Ø13.5	122.11113KFA			27				
	M20x1.5	15L	122.11113JG							

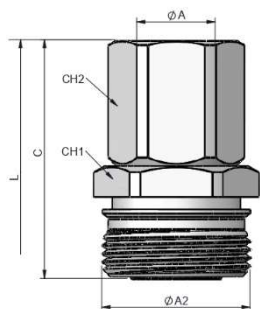
## (S) 13 - 1/2" – MALE – MALE THREAD BSPP



(S)	ØA	REF.		CH1	CH2	C	ØA2	E	L
13	1/2" BSP	122.11113AO	250	36	30	42.5	M36x2	15	*

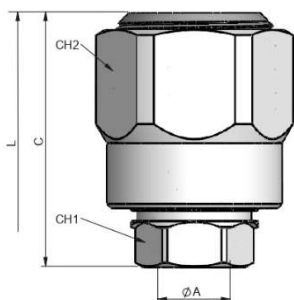
• The nut is included in the Bulkhead version

## (S) 13 - 1/2" – MALE – FEMALE THREAD BSPP / BS5200



(S)	ØA	REF.		CH1	CH2	C	ØA2	L
13	1/2" BSP	122.11113AD	250	36	30	54	M36x2	*

## (S) 13 - 1/2" – FEMALE – FEMALE THREAD ISO 9974 – 3 (DIN 3852-1 B)



(S)	ØA	REF.		CH1	CH2	C	L
13	M18x1.5	122.12113NE	250	24	41	58.5	*

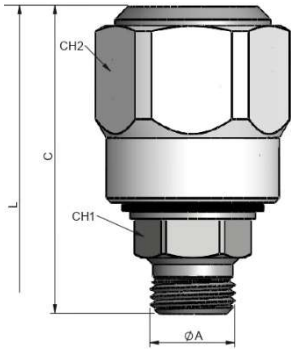
• PARKING is included in all FEMALE models




# SERIE 122 AGR

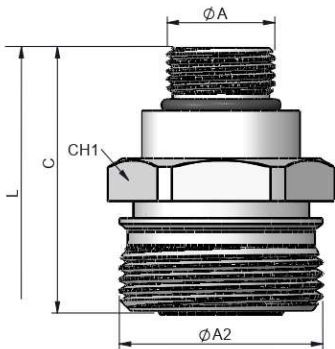


## (S) 13 - 1/2" – FEMALE – MALE THREAD BSPP (WITHOUT CONE 60°)



(S)	ØA	REF.		CH1	CH2	C	L
13	1/2" BSP Without cone 60°	122.12113AOA	250	24	41	42.5	*

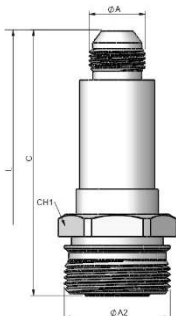
## (S) 13 - 1/2" – MALE – MALE THREAD UNF (WITHOUT CONE 37°)



(S)	ØA	REF.		CH1	C	ØA2	L
13	3/4"-16 UNF Without cone 37°	122.11113HFA	250	36	47	M36x2	*

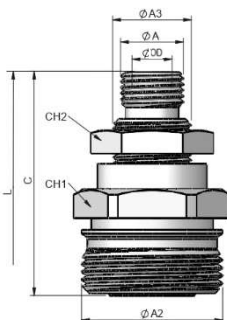
• PARKING is included in all FEMALE models

## (S) 13 - 1/2" – MALE – PROLONGED MALE THREAD UNF



(S)	ØA	REF.		CH1	C	ØA2	L
13	3/4"-16 UNF Prolonged	122.11113GFA	250	36	89.5	M36x2	*

## (S) 13 - 1/2" – MALE – BULKHEAD MALE THREAD (M16x1.5 – M20x1.5)



(S)	ØA	OD	REF.		CH1	CH2	C	ØA2	ØA3	L
13	M16x1.5	10L	122.11113JDA	250	36	27	53.5	M36x2	M20x1.5	*

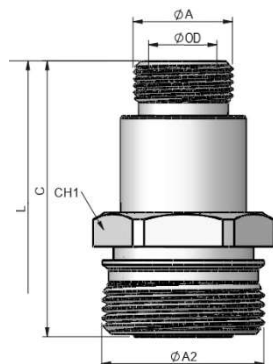
• The nut is included in the Bulkhead version



# SERIE 122 AGR



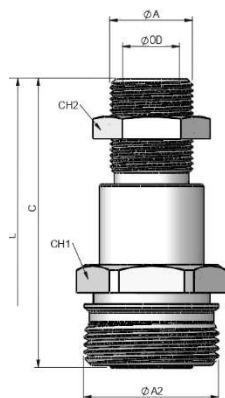
## (S) 13 - 1/2" – MALE – PROLONGED MALE THREAD (DIN 2353)



(S)	ØA	REF.		CH1	ØA2	C	OD	L
13	M22x1.5 Prolonged	122.11113JGA	250	36	M36x2	61	15L	*

• The nut is included in the Bulkhead version

## (S) 13 - 1/2" – MALE – PROLONGED BULKHEAD MALE THREAD (DIN 2353)



(S)	ØA	REF.		CH1	CH2	C	OD	ØA2	L
13	M22x1.5 Bulkhead prolonged	122.11113LGA	250	36	27	77	15L	M36x2	*

• The nut is included in the Bulkhead version





# 122 SERIES

## AGR

CAPS & PARKINGS

Designed to protect the female (coupler) and male (nipple) parts while disconnected.

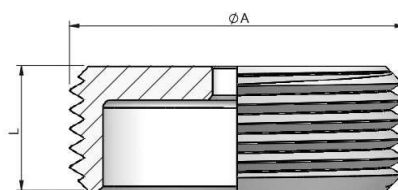
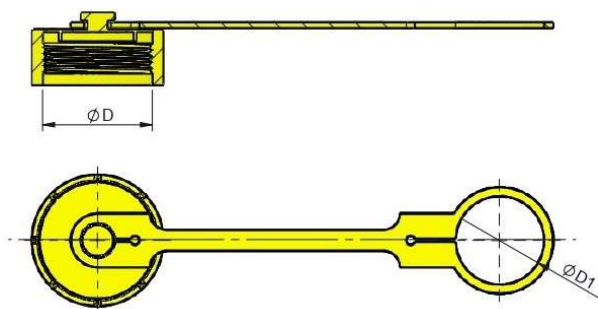
### MODEL REFERENCE

Example:

**122.5433 AA**

Series	Material	Part	Color	Size (S)	Type
122.	1 Carbon St. 5 Plastic	4 Cap 5 Parking	0 Metal 1 Rojo 2 Azul 3 Amarillo 4 Verde 5 Black 6 Blanco	3 13 1/2"	AA

(S) 13



#### CAP

(S)	RED	BLUE	YELLOW	GREEN	BLACK	WHITE
13	*	*	122.5413AA	*	*	*

#### PARKING

(T)	REF.	ØA	L
13	122.1533AA	M36X2	13

122-5

INTEVA reserves the right to make modifications to its products without prior notice. Any external or internal alterations to our products will automatically void the warranty.





# SERIE 123 AGR+ISO-A

## TECHNICAL SPECIFICATIONS

<b>Features:</b>	Designed to connect the hydraulic system between tractor and trailer or implement. Special option: male with plastic stopper included if you add to base code 010 (quantity min 250 u)	
<b>Working Pressure:</b>	Up to 250 Bar	<b>Available Size:</b> 1/2"
<b>Materials:</b>	Body:	Carbon Steel EN 10277-3
	O-rings:	NBR / VITÓN / EPDM
	Back-up-ring:	PTFE
	Springs:	EN 10270-1/SH
	Balls:	AISI 1010/1015
<b>Available Threads:</b>	DIN 2353*	
<b>Closing System:</b>	Poppet Valve	
<b>Connection/Disconnection:</b>	Sleeve Retraction	
<b>Connection Under Pressure:</b>	Not Allowed	

### Working Temperature (O-rings)

	NBR	Viton	EPDM
	+100°C	+200°C	+150°C
	-30°C	-10°C	-40°C

**Sectors:** Industrial / Agricultural



**Applications:** Designed for Hydraulic Oil (Group II-2014/68/EU)

**Interchange:** GROMELLE K-8000

\*Others on request and minimum quantity.

## MODEL REFERENCE

**Example:**

**123.11113 C**

Series	Material	Part	Closing	O-rings	Size (S)	Thread
123.	1 Carbon St.	1 Male 2 Female	1 Poppet	1 NBR 2 VITON 3 EPDM	3 13 1/2"	C Short L Large

**123-1**

INTEVA reserves the right to make modifications to its products without prior notice. Any external or internal alterations to our products will automatically void the warranty.

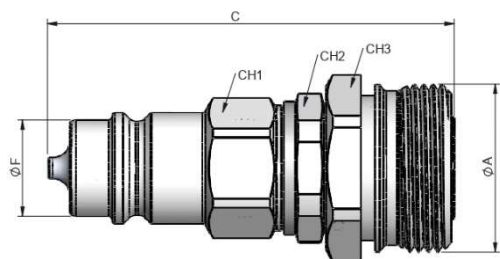




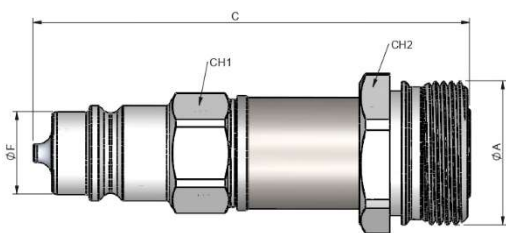
# SERIE 123 AGR+ISO-A

INTEVA

## (S) 13 - 1/2" – MALE

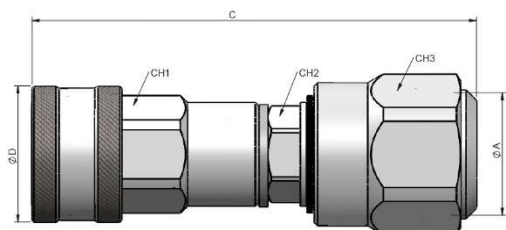


(S)	ØA	REF.		CH1	CH2	CH3	ØF	C
13	M36x2.0	123.11113C	250	27	30	36	20.5	87

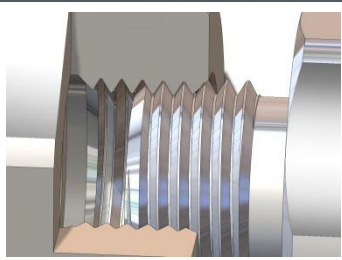


(S)	ØA	REF.		CH1	CH3	ØF	C
13	M36x2.0	123.11113L	250	27	36	20.5	108

## (S) 13 - 1/2" – FEMALE



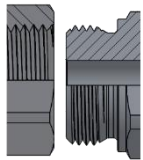
(S)	ØA	REF.		CH1	CH2	CH3	ØD	C
13	M36x2.0	123.12113C	250	30	27	41	38	124



# 999 SERIES THREADS

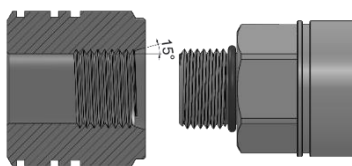
## ISO 261 METRIC THREADS - PORT / CONNECTION

### DIN 3852-1 B / ISO 9974



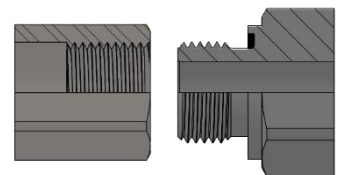
THREAD	FEMALE	MALE
M8X1	NA	PA
M10X1	NB	PB
M12X1.5	NC	PC
M14X1.5	ND	PD
M16X1.5	NE	PE
M18X1.5	NF	PF
M20X1.5	NG	PG
M22X1.5	NH	PH
M24X1.5	NI	PI
M26X1.5	NO	PO
M27X2	-	-
M30X2	NJ	PJ
M33X2	NK	PK
M42X2	NL	PL
M48X2	NM	PM
M60X2	-	-

### ISO 6149-2 (ORB)



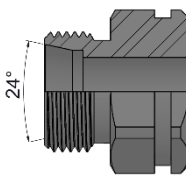
THREAD	FEMALE	MALE
M8X1	EA	OA
M10X1	EC	OC
M12X1.5	EE	OE
M14X1.5	EF	OF
M16X1.5	EG	OG
M18X1.5	EH	OH
M20X1.5	EK	OK
M22X1.5	EM	OM
M24X1.5	-	-
M26X1.5	-	-
M27X2	-	-
M30X2	EJ	OJ
M33X2	EQ	OQ
M42X2	ET	OT
M48X2	EU	OU
M60X2	EV	OV

### ISO 9974-2 (E) / DIN 3852-11



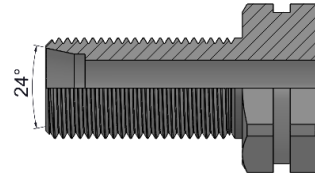
THREAD	FEMALE	MALE
M8X1	NA	QA
M10X1	NB	QB
M12X1.5	NC	QC
M14X1.5	ND	QD
M16X1.5	NE	QE
M18X1.5	NF	QF
M20X1.5	NG	QG
M22X1.5	NH	QH
M24X1.5	-	-
M26X1.5	NO	QO
M27X2	-	-
M30X2	NJ	QJ
M33X2	NK	QK
M42X2	NL	QL
M48X2	NM	QM
M60X2	-	-

### ISO 8434-1 / DIN 3861

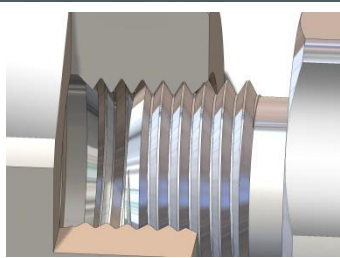


THREAD	LIGHT SERIES		HEAVY SERIES	
M12X1.5	6L	JB	-	-
M14X1.5	8L	JC	-	-
M16X1.5	10L	JD	8S	KD
M18X1.5	12L	JE	10S	KE
M20X1.5	-	-	12S	KF
M22X1.5	15L	JG	14S	KG
M24X1.5	-	-	16S	KH
M26X1.5	18L	JI	-	-
M30X2	22L	JJ	20S	KJ
M36X2	28L	JK	25S	KK
M42X2	-	-	30S	KL
M45X2	35L	JM	-	-
M52X2	42L	JN	38S	KN

### ISO 8434-1 / DIN 3861



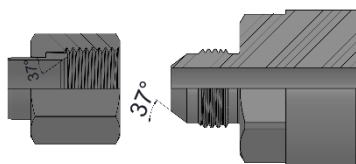
THREAD	LIGHT SERIES		HEAVY SERIES	
M12X1.5	6L	LB	-	-
M14X1.5	8L	LC	-	-
M16X1.5	10L	LD	8S	MD
M18X1.5	12L	LE	10S	ME
M20X1.5	-	-	12S	MF
M22X1.5	15L	LG	14S	MG
M24X1.5	-	-	16S	MH
M26X1.5	18L	LI	-	-
M30X2	22L	LJ	20S	MJ
M36X2	28L	LK	25S	MK
M42X2	-	-	30S	ML
M45X2	35L	LM	-	-
M52X2	-	-	38S	MN



# 999 SERIES THREADS

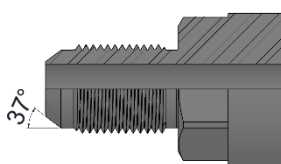
## UNIFIED SCREW THREADS ASME B1.1 – PORT / CONNECTION

SAE 37° (JIC) /  
SAE J514 / ISO 8434-2



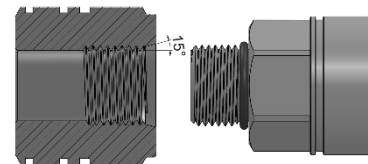
THREAD	FEMALE	MALE
3/8"- 24h UNF	UA	YA
7/16"- 20h UNF	UB	YB
1/2"- 20h UNF	UC	YC
9/16"- 18h UNF	UD	YD
11/16"- 16h UN	UE	YE
3/4"- 16h UNF	UF	YF
13/16"- 16h UN	UG	YG
7/8"- 14h UNF	UH	YH
1" – 14 UNS	-	-
1 1/16"- 12h UN	UK	YK
1 3/16"- 12h UN	UM	YM
1 5/16"- 12h UN	UO	YO
1 7/16"- 12h UN	UQ	YQ
1 5/8"- 12h UN	UT	YT
1 11/16"- 12h UN	UU	YU
1 7/8"- 12h UN	UV	YV

SAE 37° (JIC) / SAE J514 / ISO 8434-2  
BULKHEAD



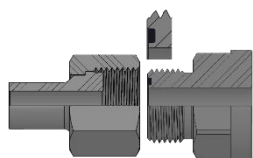
THREAD	FEMALE	MALE
3/8"- 24h UNF	-	YAP
7/16"- 20h UNF	-	YBP
1/2"- 20h UNF	-	YCP
9/16"- 18h UNF	-	YDP
11/16"- 16h UN	-	YEP
3/4"- 16h UNF	-	YFP
13/16"- 16h UN	-	YGP
7/8"- 14h UNF	-	YHP
1" – 14 UNS	-	-
1 1/16"- 12h UN	-	YKP
1 3/16"- 12h UN	-	YMP
1 5/16"- 12h UN	-	YOP
1 7/16"- 12h UN	-	YQP
1 5/8"- 12h UN	-	YTP
1 11/16"- 12h UN	-	YUP
1 7/8"- 12h UN	-	YVP

SAE J1926 / ISO 11926  
(ORB)



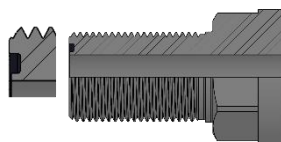
THREAD	FEMALE SAE J1926-1	MALE SAE J1926-2
3/8"- 24h UNF	GA	HA
7/16"- 20h UNF	GB	HB
1/2"- 20h UNF	GC	HC
9/16"- 18h UNF	GD	HD
11/16"- 16h UN	GE	HE
3/4"- 16h UNF	GF	HF
13/16"- 16h UN	GG	HG
7/8"- 14h UNF	GH	HH
1" – 14 UNS	-	-
1 1/16"- 12h UN	GK	HK
1 3/16"- 12h UN	GM	HM
1 5/16"- 12h UN	GO	HO
1 7/16"- 12h UN	GQ	HQ
1 5/8"- 12h UN	GT	HT
1 11/16"- 12h UN	GU	HU
1 7/8"- 12h UN	GV	HV

SAE J1453 / ISO 8434-3  
(ORFS)



THREAD	FEMALE	MALE
3/8"- 24h UNF	-	-
7/16"- 20h UNF	-	-
1/2"- 20h UNF	-	-
9/16"- 18h UNF	VD	ZD
11/16"- 16h UN	VE	ZE
3/4"- 16h UNF	-	-
13/16"- 16h UN	VG	ZG
7/8"- 14h UNF	-	-
1" – 14 UNS	VI	ZI
1 1/16"- 12h UN	-	-
1 3/16"- 12h UN	VM	ZM
1 5/16"- 12h UN	VO	ZO
1 7/16"- 12h UN	VQ	ZQ
1 5/8"- 12h UN	-	-
1 11/16"- 12h UN	VU	ZU
1 7/8"- 12h UN	-	-

SAE J1453 / ISO 8434-3  
(ORFS BULKHEAD)

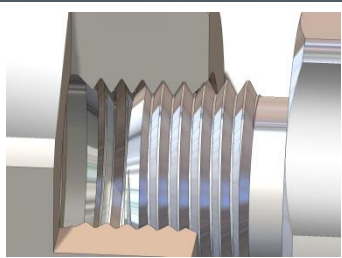


THREAD	FEMALE	MALE
3/8"- 24h UNF	-	ZAP
7/16"- 20h UNF	-	ZBP
1/2"- 20h UNF	-	ZCP
9/16"- 18h UNF	-	ZDP
11/16"- 16h UN	-	ZEP
3/4"- 16h UNF	-	ZFP
13/16"- 16h UN	-	ZGP
7/8"- 14h UNF	-	ZHP
1" – 14 UNS	-	ZIP
1 1/16"- 12h UN	-	ZKP
1 3/16"- 12h UN	-	ZMP
1 5/16"- 12h UN	-	ZOP
1 7/16"- 12h UN	-	ZQP
1 5/8"- 12h UN	-	ZTP
1 11/16"- 12h UN	-	ZUP
1 7/8"- 12h UN	-	ZVP

## SPECIALS

THREAD	FEMALE	MALE
3/8"- 24h UNF	VA	ZA
7/16"- 20h UNF	VB	ZB
1/2"- 20h UNF	VC	ZC
3/4"- 16h UNF	VF	ZF
7/8"- 14h UNF	VH	ZH
1 1/16"- 12h UN	VK	ZK
1 5/8"- 12h UN	VT	ZT
1 7/8"- 12h UN	VV	ZV

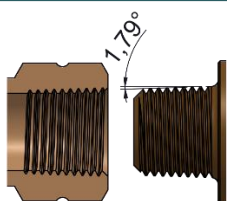




# 999 SERIES THREADS

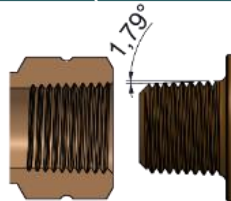
## TAPERED THREAD

**NPTF**  
**ASME B1.20.3**



THREAD	FEMALE	MALE
1/8"	BA	BL
1/4"	BB	BM
3/8"	BC	BN
1/2"	BD	BO
3/4"	BE	BP
1"	BF	BQ
1 1/4"	BG	BR
1 1/2"	BH	BS
2"	BI	BT
2 1/2"	BJ	BU
3"	BK	BV

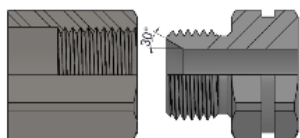
**BSPT**  
**ISO 7/1 (DIN 3852-2 C)**



THREAD	FEMALE	MALE
1/8"	DA	DL
1/4"	DB	DM
3/8"	DC	DN
1/2"	DD	DO
3/4"	DE	DP
1"	DF	DQ
1 1/4"	DG	DR
1 1/2"	DH	DS
2"	DI	DT
2 1/2"	-	-
3"	-	-

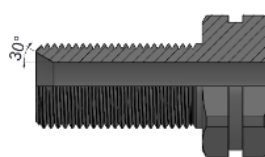
## ISO 228/1 BSP THREADS

**BSPP / BS5200**



THREAD	FEMALE	MALE
1/8"	AA	AL
1/4"	AB	AM
3/8"	AC	AN
1/2"	AD	AO
3/4"	AE	AP
1"	AF	AQ
1 1/4"	AG	AR
1 1/2"	AH	AS
2"	AI	AT
2 1/2"	AJ	AU
3"	AK	AV

**BSPP / BS5200**  
**BULKHEAD**



THREAD	FEMALE	MALE
1/8"	-	CL
1/4"	-	CM
3/8"	-	CN
1/2"	-	CO
3/4"	-	CP
1"	-	CQ
1 1/4"	-	CR
1 1/2"	-	CS
2"	-	CT
2 1/2"	-	-
3"	-	-

## SPECIALS

THREAD	
M20X1.5 (13.5)	KFA
M20X1.5 (CONO 60°)	KFB
M16X1.5 BULKHEAD M20X1.5	JDA
M22X1.5 PROLOGADA	JGA
M22X1.5 15L LONG. HEX 35MM	JGB
M22X1.5 BULKHEAD PROLOGADA	LGA
3/4" 16h UNF (SIN CONO 37°)	HFA
3/4" 16h UNF (CILINDRICA)	GFA



C/ Berguedà nº 14-16 P.I. Can Bernadés Subirà  
08130 Santa Perpètua de la Mogoda  
BARCELONA (SPAIN)  
Tel / Phone +34 93 560 79 43  
Fax +34 93 574 30 94