

Gerotor pumps SOP 80 for filtration systems

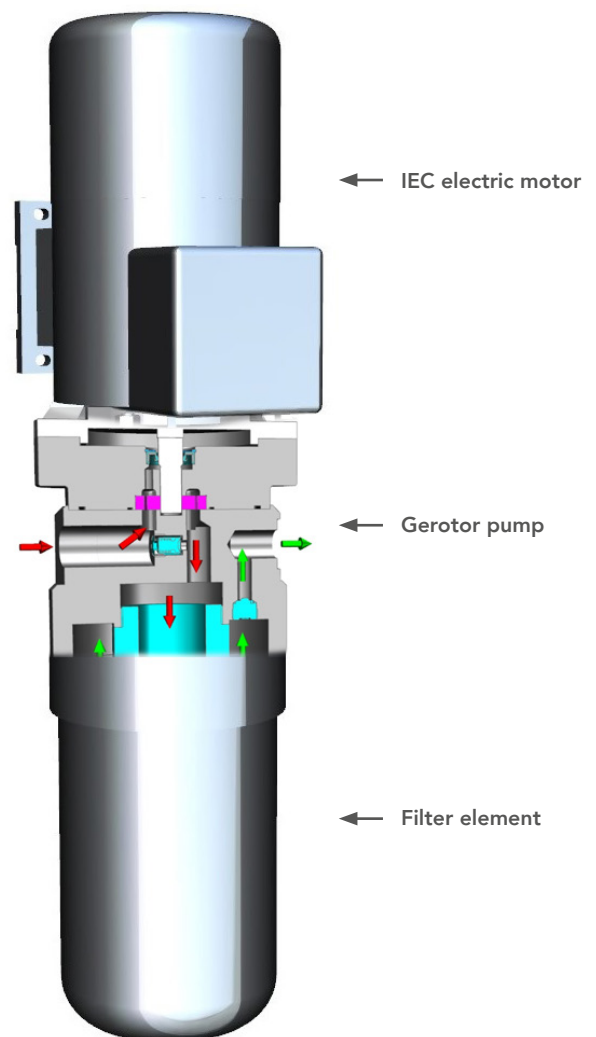
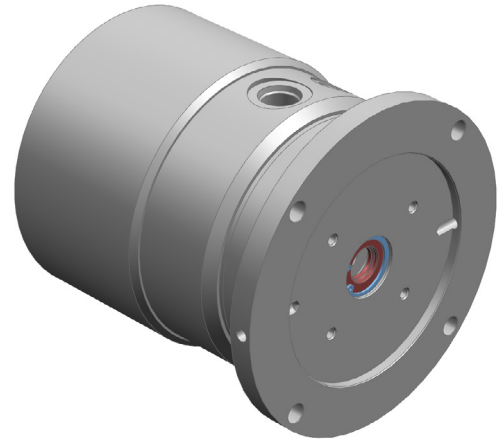
I The robust and compact internal gear pumps for stationary and mobile filtration systems

In daily use, filtration systems are exposed to the toughest conditions. These include dirt, temperature fluctuations and vibrations as well as heavily contaminated media-containing solids.

KRACHT gerotor pumps are predestined for use under such conditions. Thanks to its simple and robust design, only two moving parts plus a shaft and, depending on the type of installation, one or two bearings, it meets all operational requirements. This also saves length and weight.

Compared to conventional external gear pumps, the suction and pressure connection of the pump is axial to the driving shaft. This also supports the compact construction. Due to the solid tooth shape, the gerotor pump is resistant to hydraulic and mechanical impact loads. Furthermore, this pump is characterized by an extremely good smoothness and a low noise level. The good efficiency and long service life increase the efficiency of your entire system and optimize the processes.

The pumps can be supplied with or without an IEC electric motor. The inline design facilitates direct connection to the filter element.



Characteristics

| | |
|--------------------|--|
| Displacement | 2,32 und 3,42 cm ³ /rev (other designs on request) |
| Working pressure | ... 25 bar |
| Speed | 200 ... 3 600 rpm |
| Viscosity | 7 ... 2 200 mm ² /s |
| Dirt particle size | < 200 µm |
| Media temperature | -20 ... 150 °C |
| Seals | NBR, FKM, EPDM, FEP |
| Optional | <ul style="list-style-type: none"> - with integrated pressure relief valve DBV - with measuring connection for pressure sensor - with sampling connection |