



207 SERIES CAT



TECHNICAL SPECIFICATIONS

Features:	Used for high-pressure and heavy work.	
Working Pressure:	Up to 420 Bar	
Materials:	Body:	Carbon Steel EN -10277-3 Stainless Steel 316
	O-rings:	NBR / VITON / EPDM
	Back-up-ring:	PTFE
	Springs:	EN-10270-1/SH
	Balls:	-
Available Threads:	BSP / ISO 9974 (DIN 3852-1 B)*	
Closing System:	Poppet Valve	
Connection/Disconnection:	Screw on / off both parts	
Connection Under Pressure:	Residual Pressure	

Available Size: 1/2" y 1"

Working Temperature (O-rings)

	NBR	Viton	EPDM
	+100°C	+200°C	+150°C
	-30°C	-10°C	-40°C

Sectors: Industrial / Agricultural / Construction machinery



Applications: Designed for Hydraulic Oil
(Group II- 2014/68/EU)

Interchange: DNP VAV

* Others available upon request

MODEL REFERENCE

Example:

207.12113 NG

Series	Material	Part	Closing	O-rings	Size (S)	Thread
207.	1 Carbon St.	1 Male	0 Without	0 Without	3 13	1/2"
	2 SS316	2 Female	1 Poppet	1 NBR	5 25	1"
				2 VITON		
				3 EPDM		

2 letters (see
Thread Table on
page 999-1)

207-1

INTEVA reserves the right to make modifications to its products without prior notice. Any external or internal alterations to our products will automatically void the warranty.

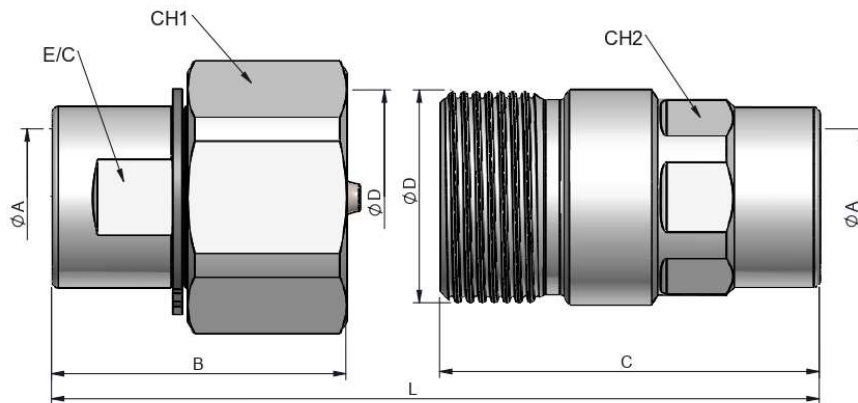




207 SERIES CAT



(S) 13 - 1/2"



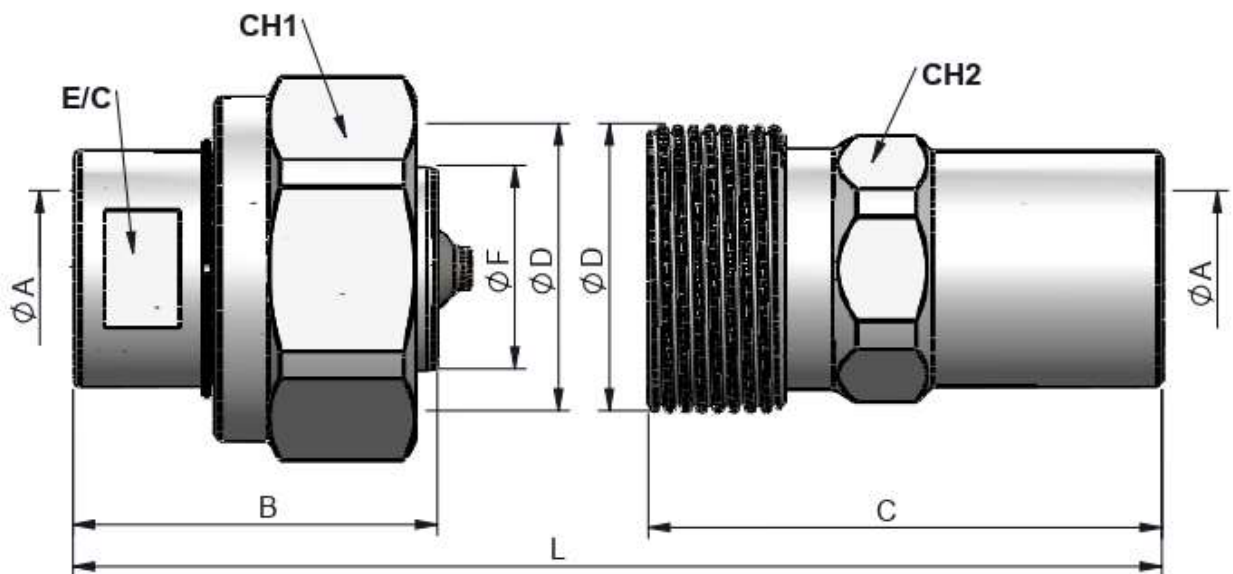
STANDARD MALE MODELS

(S)	ØA	REF.		CH1	E/C	ØD	B	L
13	M22x1.5	207.11113NG	400	41	27	Rd 35x2	48	92
	1/2" BSP	207.11113AD						

STANDARD FEMALE MODELS

(S)	ØA	REF.		CH2	C	ØD	L
13	M22x1.5	207.12113NG	400	30	62	Rd 35x2	92
	1/2" BSP	207.12113AD					

(S) 25 - 1"



STANDARD MALE MODELS

(S)	ØA	REF.		CH1	E/C	ØF	ØD	B	L
25	M30x1.5	207.11115NS	360	65	38	38	Rd 54x3	68	134
	1" BSP	207.11115AF							

STANDARD FEMALE MODELS

(S)	ØA	REF.		CH2	C	ØD	L
25	M30x1.5	207.12115NS	360	46	96	Rd 54x3	134
	1" BSP	207.12115AF					

207-2

INTEVA reserves the right to make modifications to its products without prior notice. Any external or internal alterations to our products will automatically void the warranty.





207 SERIES CAT

CAPS &
PLUGS

INTEVA

Designed to protect the female (coupler) and male (nipple) parts while disconnected.

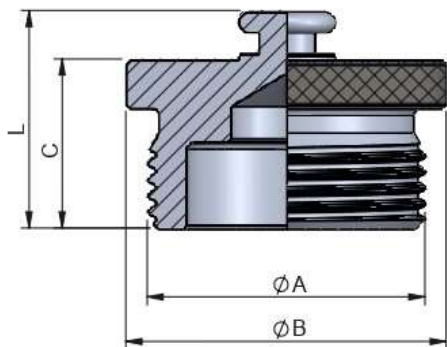
MODEL REFERENCE

Example:

207.6403 AA

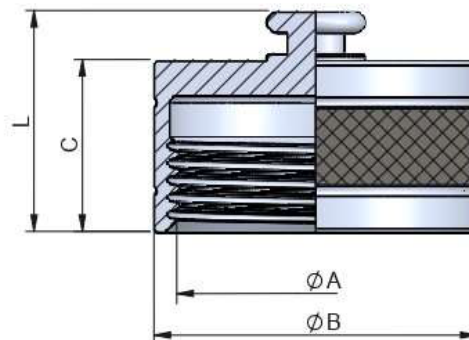
Series	Material	Part	Color	Size (S)	Type
206.	6 Aluminum	3 Plug 4 Cap	0 Metal	3 13 1/2" 5 25 1"	AA

(S) 13 – (S) 25 - ALUMINUM



PLUG

(S)	REF.	ØA	ØB	C	L
13	207.6303AA	Rd 35x2	40	21	27
25	207.6305AA	Rd 54x3	60	37.5	43.5



CAP

(S)	REF.	ØA	ØB	C	L
13	207.6403AA	Rd 35x2	40	21	27
25	207.6405AA	Rd 54x3	60	29	35