



201 SERIES VCR



TECHNICAL SPECIFICATIONS

Features: Developed for hydraulic systems on tipper trucks and tank trailers a.o.
Low pressure drop.

Working Pressure: Up to 350 Bar

Materials:

Body:	Carbon Steel EN 10277-3
O-rings:	NBR / VITON / EPDM
Back-up-ring:	PTFE
Springs:	EN 10270-1/SH
Balls:	*

Available Threads: BSP

Closing System: Poppet Valve

Connection/Disconnection: Screw and unscrew both parts

Connection Under Pressure: Residual pressure

Available Size: 3/4" y 1"

Working Temperature (O-rings)

NBR	Viton	EPDM
+100°C	+200°C	+150°C
-30°C	-10°C	-40°C

Sectors: Vehicles



Applications: Designed for Hydraulic Oil (Group II-2014/68/EU)

Interchange: FASTER CVE / EDBRO

MODEL REFERENCE

Example:

201.11114 AE

Series	Material	Part	Closing	O-rings	Size (S)	Thread
201.	1 Carbon St.	1 Male 2 Female	1 Poppet	0 Without 1 NBR 2 VITON 3 EPDM	4 20 5 25 3/4" 1"	2 letters (see Thread Table on page 999-1)

201-1

INTEVA reserves the right to make modifications to its products without prior notice. Any external or internal alterations to our products will automatically void the warranty.

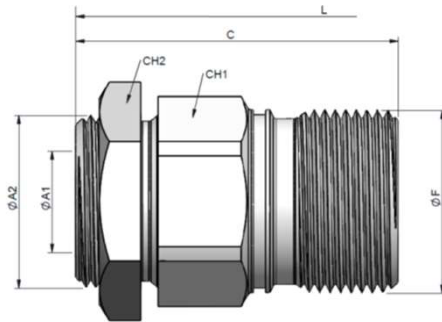




201 SERIES VCR

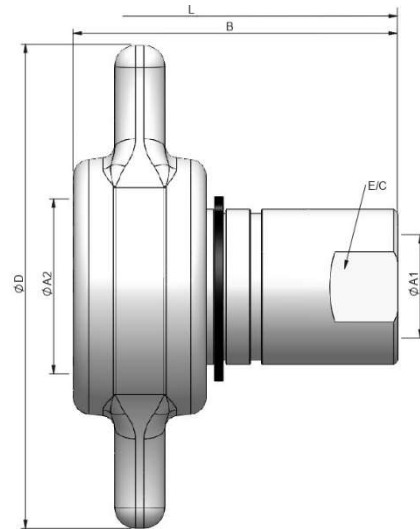


(S) 20 - 3/4"



STANDARD MALE MODELS

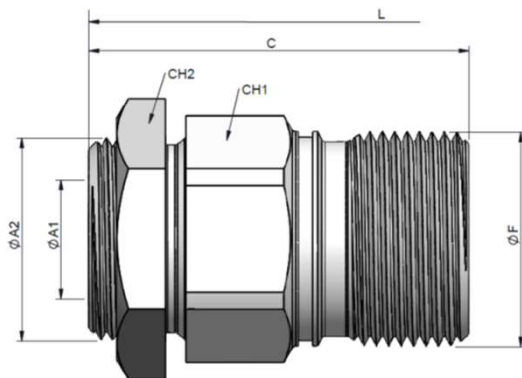
(S)	ØA1	ØA2	REF.		CH1	CH2	C	ØF	L
20	3/4" BSP	1 1/4" BSP	201.11114AE		46	50	78	44	138
	1" BSP	1" BSP	201.11114AQ				68		118.5



STANDARD FEMALE MODELS

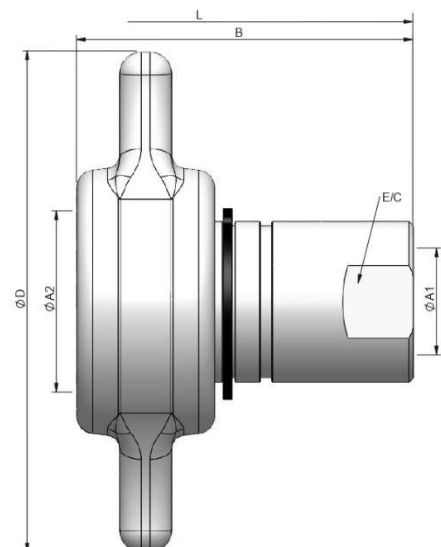
(S)	ØA1	ØA2	REF.		E/C	B	ØD	L
20	3/4" BSP	41.50	201.12114AE		33	78	115	138
	1" BSP		201.12114AQ			74		118.5

(S) 25 - 1"



STANDARD MALE MODELS

(S)	ØA1	ØA2	REF.		CH1	C	ØF	L
25	1" BSP	1 1/4" BSP	201.11115AF		55	83	53.6	148



STANDARD FEMALE MODELS

(S)	ØA1	ØA2	REF.		E/C	B	ØD	L
25	1" BSP	51	201.12115AF		40	83	115	148



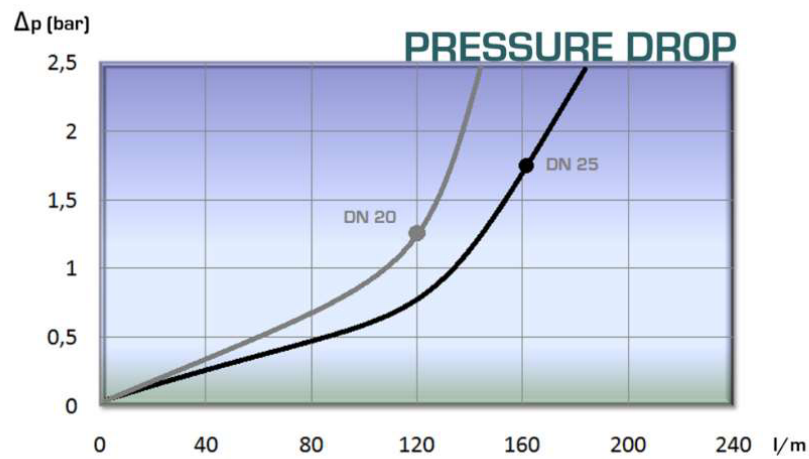
201 SERIES VCR



TECHNICAL DATA

(S)	Rated Flow	Min. Burst Pressure (bar)			Max. Working Pressure
		Male	Female	Connected	
20	120 l/m	1100	1300	1325	350
25	160 l/m	1200	900	1325	300

Test performed according to ISO 18869





201 SERIES VCR

CAPS
PLUGS
PARKINGS

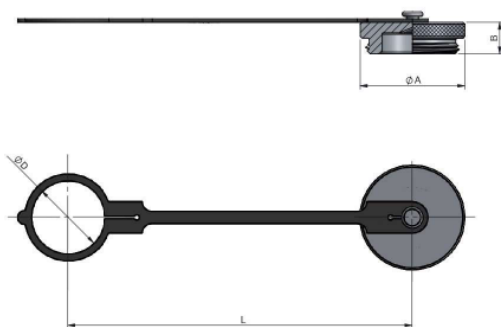
MODEL REFERENCE / DIMENSIONS

Example:

201.6304 AA

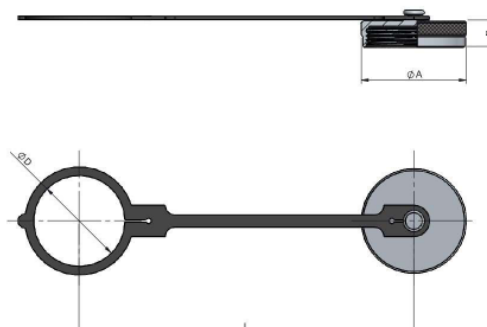
Series	Material	Part	Color	Size	Type
201.	1 Carbon St. 6 Aluminum	3 Plug 4 Cap 5 Parking	0 Metal	4 20 3/4" 5 25 1	AA

(S) 10 / (S) 25



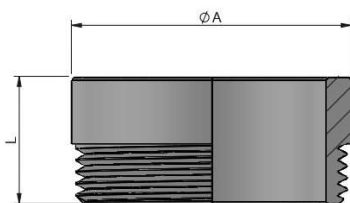
PLUG

(S)	REF.	ØA	L	B	ØD
20	201.6304AA	50	200	25	37.5
25	201.6305AA	60	191	25	42



CAP

(S)	REF.	ØA	L	B	ØD
20	201.6404AA	48	191	13	42
25	201.6405AA	60	191	18	52



PARKING

	REF.	ØA	L
20	201.1504AA	45	25
25	201.1505AA	55	25

201-4

INTEVA reserves the right to make modifications to its products without prior notice. Any external or internal alterations to our products will automatically void the warranty.

