



140 SERIES CVF

HIGH FLOW



Size 13 - 1/2" meets ISO 7241 A and ISO 5675 requirements

TECHNICAL SPECIFICATIONS

Features: High flow rate and reduced pressure drop.
Designed for high pressure applications in cleaning systems.

Operating pressure: Up to 700 Bar

Materials: Body: Carbon Steel EN -10277-3*

O-rings: NBR / VITON

Back-up-ring: PTFE

Springs: EN 10270-1/SH

Balls: AISI 1010/1015

Available Threads: BSP*

Closing System: Free Flow (without valve)

Connection: Sleeve Retraction & Press to connect
Disconnection: Sleeve Retraction

Connection Under Pressure: Not Allowed

Available Size: 1/4" a 1"

Working Temperature (O-rings)

NBR	Viton	EPDM
+100°C	+200°C	+150°C
-30°C	-10°C	-40°C

Sectors: Industrial, High pressure cleaning systems



Applications: Designed for Hydraulic Oil & Hot Water (Group II- 2014/68/EU)

Interchange: GROMELLE 7000

*Others upon request.

MODEL STRUCTURE

Example:

140.11001 AB

Series	Material	Part	Closing	O-rings	Size (S)	Thread
140.	1 Carbon St.**	1 Male	0 Without	0 Without	1 6	2 letters (see Table of Threads page 999-1)
	2 SS316	2 Female		1 NBR	2 10	
	4 Brass			2 VITON	3 13	

**Nickel-plated - Add 011 to the end of the reference.

140-1

INTEVA reserves the right to make modifications to its products without prior notice. Any external or internal alterations to our products will automatically void the warranty.



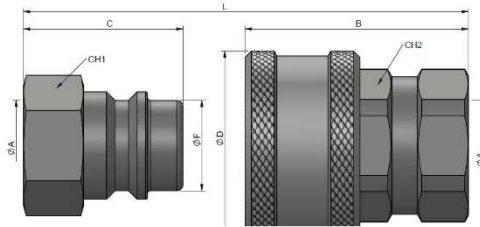
v11



140 SERIES CVF

HIGH FLOW

(S) 6- 1/4"



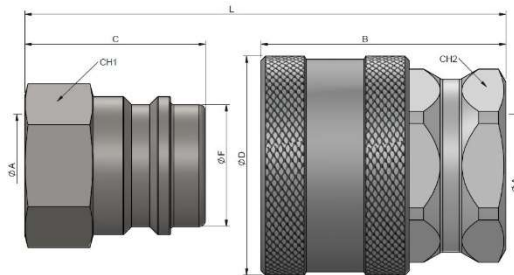
STANDARD MALE MODELS

(S)	ØA	REF.		CH1	C	ØF	L
6	1/4" BSP	140.11001AB	700	19	25	14.10	45

STANDARD FEMALE MODELS

(S)	ØA	REF.		CH2	B	ØD	L
6	1/4" BSP	140.12011AB	700	22	35	29.5	45

(S) 10 - 3/8"



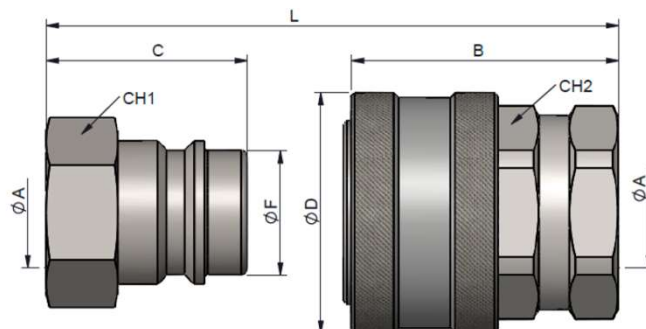
STANDARD MALE MODELS

(S)	ØA	REF.		CH1	C	ØF	L
10	3/8" BSP	140.11002AC	600	22	28	18.90	48.50

STANDARD FEMALE MODELS

(S)	ØA	REF.		CH2	B	ØD	L
10	3/8" BSP	140.12012AC	600	27	38	34	48.50

(S) 13 - 1/2"



STANDARD MALE MODELS

(S)	ØA	REF.		CH1	C	ØF	L
13	1/2" BSP	140.11003AD	500	27	33	20.40	55.50

STANDARD FEMALE MODELS

(S)	ØA	REF.		CH2	B	ØD	L
13	1/2" BSP	140.12013AD	500	32	45	39.5	55.50



140 SERIES CVP

CAPS &
PLUGS

INTEVA

Designed to protect female (coupler) and male (nipple) parts while they are disconnected.
Size 13 – 1/2" manufactured according to ISO 7241-A & ISO 5675 norms

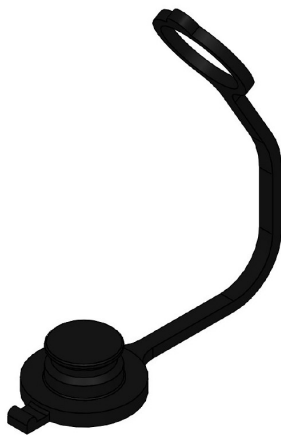
MODEL STRUCTURE / DIMENSIONS

Example:

104.5353 AA

Series	Material	Part	Color	Size (S)	Type
104.	5 Plastic	3 Cap	5 Black	1 6 1/4"	AA
101.		4 Plug		2 10 3/8"	
				3 13 1/2"	

(S) 6 – (S) 13 – PLASTIC



CAP (FEMALE)



PLUG (MALE)

(S)	RED	BLUE	YELLOW	GREEN	BLACK	WHITE
6	*	*	*	*	104.5351AA	*
10	*	*	*	*	104.5352AA	*
13	*	*	*	*	101.5353AA	*

* Available upon request

(S)	RED	BLUE	YELLOW	GREEN	BLACK	WHITE
6	*	*	*	*	104.5451AA	*
10	*	*	*	*	104.5452AA	*
13	*	*	*	*	101.5453AA	*

140-3

INTEVA reserves the right to make modifications to its products without prior notice. Any external or internal alterations to our products will automatically void the warranty.



v11