



105 SERIES PSH

ISO 7241-A
PUSH PULL


Manufactured according to ISO 7241-A & ISO 5675 norms..

TECHNICAL SPECIFICATIONS

Operating pressure:	Up to 300 Bar	
Materials:	Body:	Carbon Steel EN 10277-3
	O-rings:	NBR / VITON / EPDM
	Back-up-ring:	PTFE
	Springs:	EN 10270-1/SH
	Balls:	AISI 1010/1015
Available Threads:	BSP / NPTF / ISO 11926 (J1926)*	
Closing System:	Poppet Valve or Ball / C.U.R.P.	
Connection / Disconnection	Push / Pull	
Connection Under Pressure:	Not Allowed / Only C.U.R.P. version	

Available Size: 1/2"

Working Temperature (O-rings)

	NBR	Viton	EPDM
	+100°C	+200°C	+150°C
	-30°C	-10°C	-40°C

Sectors: Industrial / Agricultural



Applications: Designed for Hydraulic Oil (Group II-2014/68/EU)
Interchange: FASTER PV / CPV - ARGUS SVK - PARKER 4200

*Others upon request.

MODEL STRUCTURE

Example:

105.12113 BD

Series	Material	Part	Closing	O-rings	Size (S)	Thread
105.	1 Carbon St.	1 Male 2 Female	0 Without 1 Poppet 2 Ball 3 C.U.R.P	0 Without 1 NBR 2 VITON 3 EPDM	3 13 1/2"	2 letters (see Table of Threads page 999-1)

105-1

INTEVA reserves the right to make modifications to its products without prior notice. Any external or internal alterations to our products will automatically void the warranty.



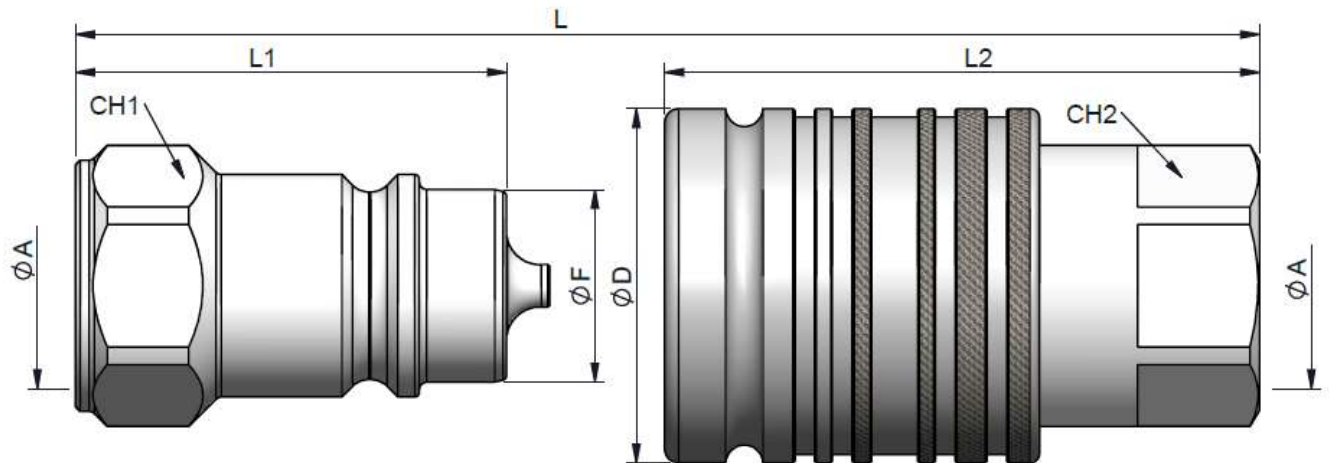
v11



105 SERIES PSH

ISO 7241-A
PUSH PULL

(S) 13 - 1/2"



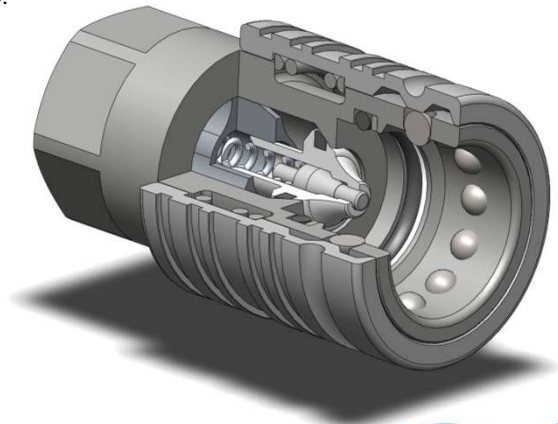
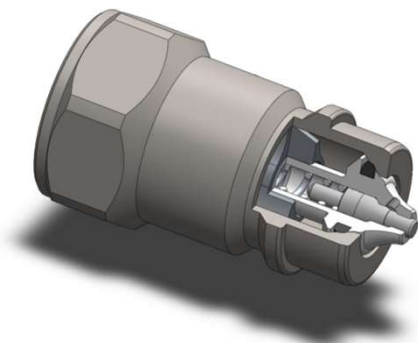
STANDARD MALE MODELS

(S)	ØA	REF.		CH1	L1	ØF	L
13	1/2" BSP	101.11113AD		27/30	46	20.56	87.50
	1/2" NPTF	101.11113BD					
	M22X1.5	101.11113NG		27/30			
	3/4"-16h UNF (ORB)	101.11113GF		27/30			
	7/8"-14h UNF (ORB)	101.11113GH		27/30			

STANDARD FEMALE MODELS

(S)	ØA	REF.		CH2	L2	ØD	L
13	1/2" BSP	105.12113AD		300	27	63.5	37.80
	1/2" NPTF	105.12113BD					
	M22X1.5	105.12113NG					

C.U.R.P. System available
Allow connection under
residual pressure.

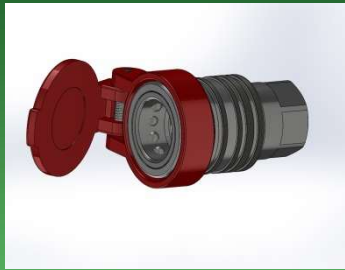


105-2

INTEVA reserves the right to make modifications to its products without prior notice. Any external or internal alterations to our products will automatically void the warranty.



v11



105 SERIES PSH

PLUGS
& CAPS

INTEVA

Designed to protect female (coupler) and male (nipple) parts while they are disconnected.
Manufactured according to ISO 7241-A and ISO 5675 norms.

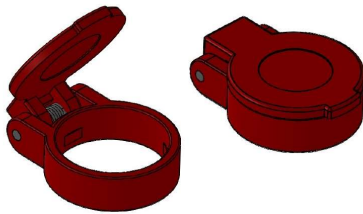
MODEL STRUCTURE / DIMENSIONS

Example:

105.5413 AA

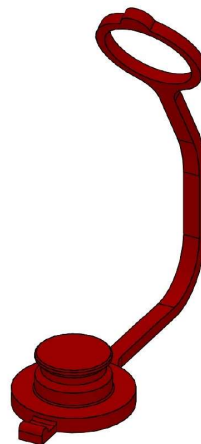
Series	Material	Part	Color	Size (S)	Type
101.	5 Plastic	3 Plug	0 Plain Metal	3 13 1/2"	AA
105.		4 Cap	1 Red		
			2 Blue		
			3 Yellow		
			4 Green		
			5 Black		
			6 White		

(S) 13 – PLASTIC



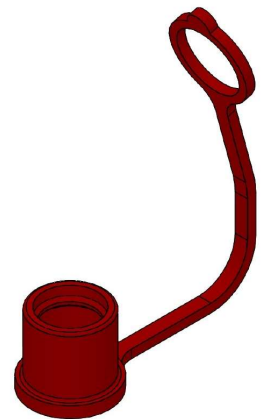
AUTOMATIC CAP

(S)	RED	BL	Y	G	B	W
13	105.5413AA	*	*	*	*	*



PLUG (COUPLER)

(S)	RED	BL	Y	G	B	W
13	101.5313AA	*	*	*	*	*



CAP (NIPPLE)

(S)	RED	BL	Y	G	B	W
13	101.5413AA	*	*	*	*	*

*Available upon minimum order quantity

105-3

INTEVA reserves the right to make modifications to its products without prior notice. Any external or internal alterations to our products will automatically void the warranty.



v11